

The following table provides the information on the operation of the Swing Service market on the North Metro and South Metro sub-networks over a 13 month rolling window.

Month	Metro-South Sub-Network		Metro-North Sub-Network	
	Peak SS South-Metro	Average SS South-Metro	Peak SS North-Metro	Average SS North-Metro
November 2015			265	62
December 2015			351	23
January 2016			204	22
February 2016			330	24
March 2016			799	38
April 2016			1,785	112
May 2016	1,254	264	3,194	181
June 2016	1,291	126	932	97
July 2016	521	97	461	95
August 2016	636	53	434	86
September 2016	3,721	640	1,617	412
October 2016	1,983	225	3,481	268
November 2016	1,175	205	6,598	793
Average	Since March 2016	230	2-year	126

North Metro

The average and peak Swing Service volumes in the North Metro sub-network for November 2016 were at normal levels.

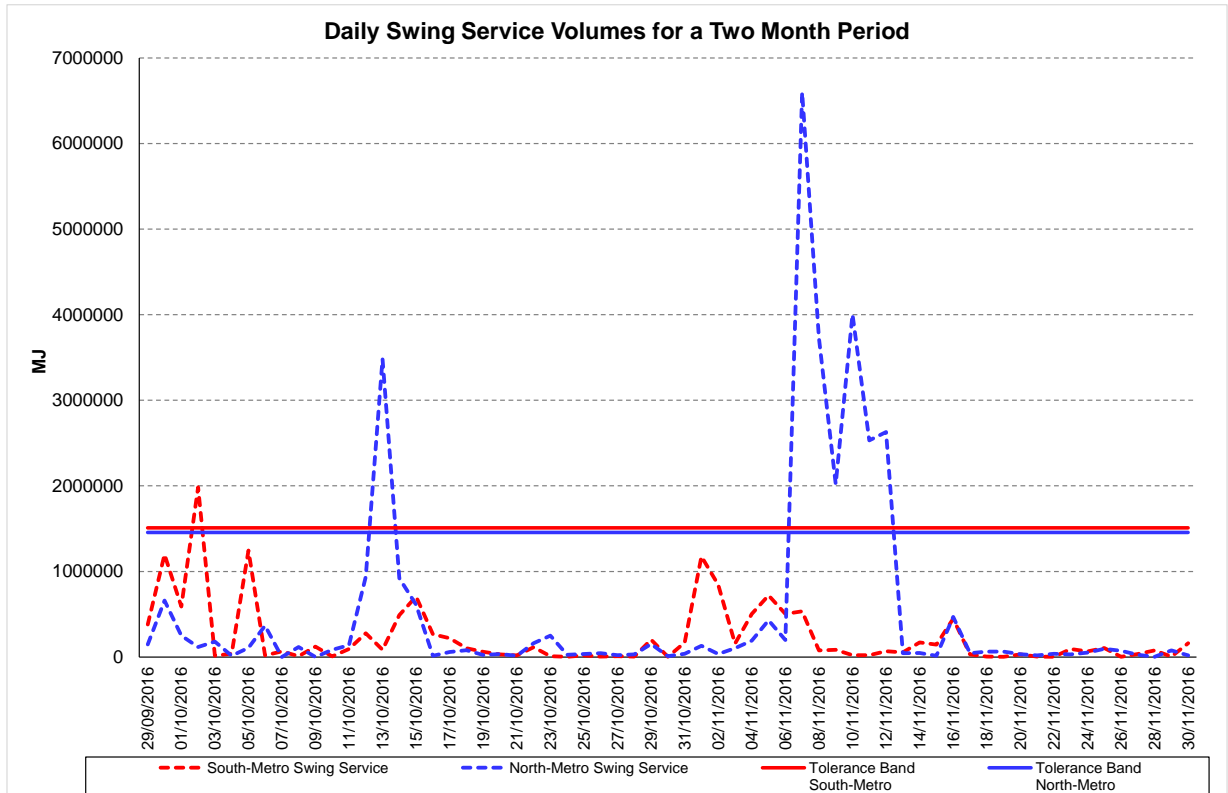
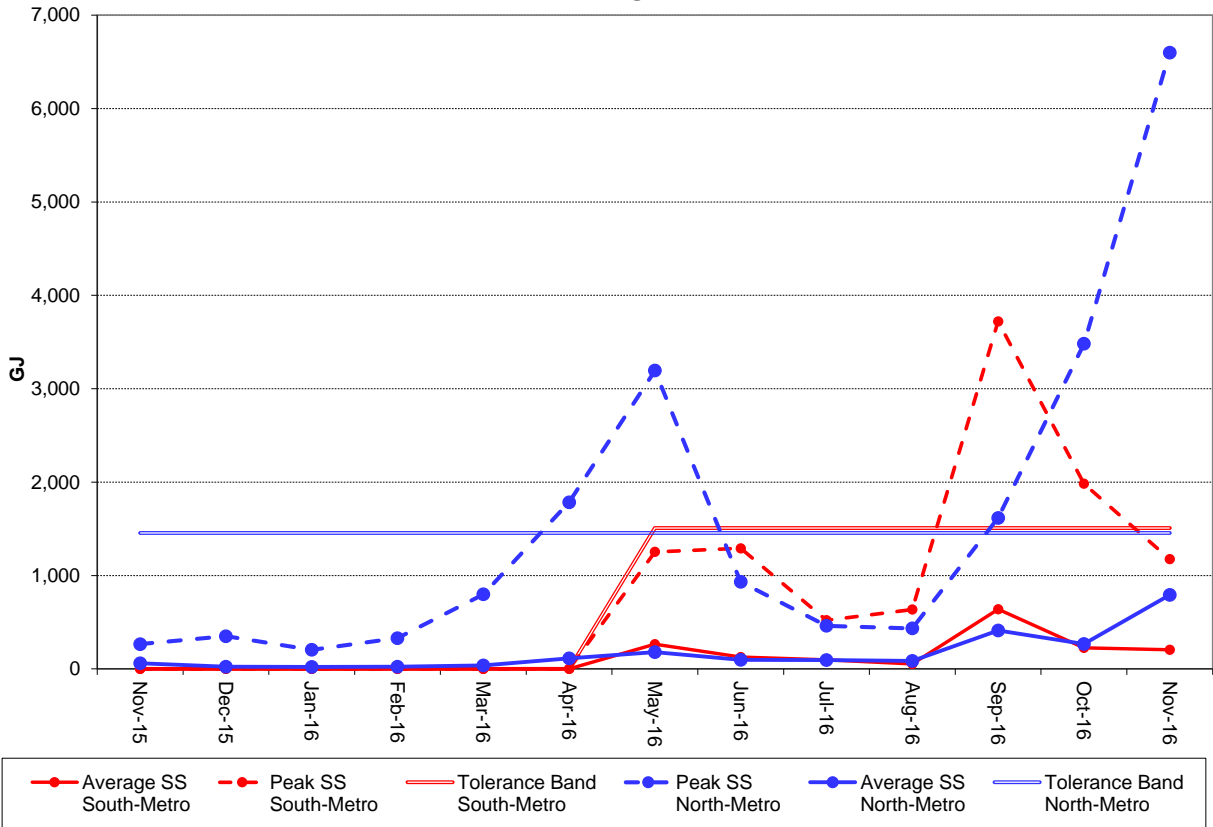
However there were Spikes in the second week of the month due to Gas Supply issues.

South Metro

Swing Service has applied in the South Metro sub-network since March 2016, so there is still not a sufficient long-term trend to use as a comparator for market performance.



13 Month Swing Service Results



Terms:

- Peak SS means the maximum amount of Swing Service recorded on a day during that month.
- Average SS means the average amount of Swing Service for any day in that month.
- Peak Trend is the linear trend of the Peak SS data, using the least squares method.
- Average Trend is the linear trend of the Average SS data, using the least squares method.
- Tolerance Band is a marker – REMCo will investigate and report on any Swing Service spikes that are larger than the Tolerance Band. The Tolerance Band is defined as a volume equal to the mean amount of Swing Service over the last 2 years plus 3 standard deviations.