

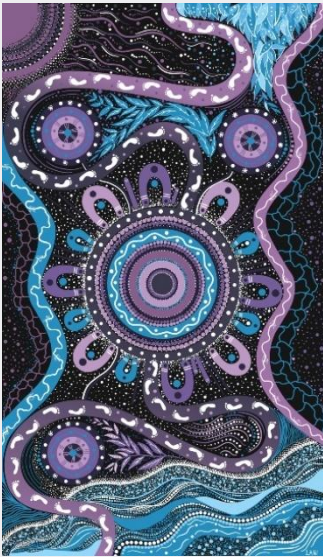
FINAL Implementation Assessment for the Demand Side Programme (DSP) Participation Initiative

March 2026

Ref: IA-2025-08

Preliminary assessment of the changes, impacts and risks to
implement a new initiative





We acknowledge the Traditional Custodians of the land, seas and waters across Australia. We honour the wisdom of Aboriginal and Torres Strait Islander Elders past and present and embrace future generations.

We acknowledge that, wherever we work, we do so on Aboriginal and Torres Strait Islander lands. We pay respect to the world's oldest continuing culture and First Nations peoples' deep and continuing connection to Country; and hope that our work can benefit both people and Country.

'Journey of unity: AEMO's Reconciliation Path' by Lani Balzan

AEMO Group is proud to have launched its first [Reconciliation Action Plan](#) in May 2024. 'Journey of unity: AEMO's Reconciliation Path' was created by Wiradjuri artist Lani Balzan to visually narrate our ongoing journey towards reconciliation - a collaborative endeavour that honours First Nations cultures, fosters mutual understanding, and paves the way for a brighter, more inclusive future.

Important notice

Purpose

AEMO has prepared this document to provide preliminary information about the implementation of the Demand Side Program (DSP) Participation initiative.

Disclaimer

This document or the information in it may be subsequently updated or amended. This document does not constitute legal, business, engineering or technical advice. It should not be relied on as a substitute for obtaining detailed advice about the Wholesale Electricity Market Rules, or any other applicable laws, procedures or policies or the capability or performance of relevant equipment. AEMO has made reasonable efforts to ensure the quality of the information in this document but cannot guarantee its accuracy or completeness.

Accordingly, to the maximum extent permitted by law, AEMO and its officers, employees and consultants involved in the preparation of this document:

- make no representation or warranty, express or implied, as to the currency, accuracy, reliability or completeness of the information in this document; and
- are not liable (whether by reason of negligence or otherwise) for any statements or representations in this document, or any omissions from it, or for any use or reliance on the information in it.

Copyright

© 2025 Australian Energy Market Operator Limited. The material in this publication may be used in accordance with the [copyright permissions on AEMO's website](#).

Version control

Version	Release date	Changes
1	24/11/2025	N/A
2	23/03/2026	Draft to Final IA



Contents

1	At a glance	4
1.1	Purpose of the IA	4
1.2	Consultation and feedback	5
2	Overview	6
2.1	The problem / opportunity	6
2.2	Response	6
2.3	Rule packages	10
3	System impacts	12
3.1	System impact illustration	12
3.2	System impact summary	14
4	Impacts on published documentation	16
5	External impacts	18
6	Implementation	21
6.1	Indicative implementation timeline	21
6.2	Market readiness approach	22
6.3	Indicative implementation cost – AEMO	22
6.4	Implementation risks	22
A1.	Glossary	24
A2.	Key concept: registered DSP versus certified ‘DSP’	26
A2.1	certified DSP	26
A2.2	registered DSP	26
A2.3	Example	27
A2.4	Implications for Application Fees	28
A3.	Impact Rating Guidance	29
A4.	System impact illustration: Explanatory notes	31
A5.	MPWG Feedback	33

1 At a glance

Problem / opportunity	AEMO must implement a series of changes to its WEM registration, Reserve Capacity Mechanism (RCM), settlement, dispatch and metering systems to give effect to new Electricity System and Market Rules (ESM Rules) that expand the opportunities for demand side programme (DSP) facilities to participate in the RCM. The changes are to apply for the 2024 Reserve Capacity Cycle and must therefore commence during FY26.
Proposed solution	<p>Two projects:</p> <p>Project 1 – This includes modification to:</p> <ul style="list-style-type: none"> • Registration system to enable participants to register DSPs, including complementary changes to the Certification of Reserve Capacity (CRC) processes. • Updates to AEMO’s metering data system to store the Transmission Node Identifier (TNI) information about each meter as provided by Western Power. • Dispatch systems and processes to simplify the dispatch of multiple DSP facilities. <p>Project 2 – This includes modifications to:</p> <ul style="list-style-type: none"> • The Prudential and Settlement systems to accommodate Relevant Demand and DSP Refund changes. • RCM Operations to align RC Testing (including RC Security) to the ESM Rules.
Timing	<ul style="list-style-type: none"> • Release 1: March 2026 – Registration & CRC go-live • Release 1.1: May 2026 – minor back-end changes to Registration and metering. • Release 2: September 2026 – Dispatch, Settlement and RC testing go-live. <p>AEMO anticipates late adjustments to the solution for DSP dispatch, that could affect the timing of the second release date.</p>
Estimated cost	<p>Project 1 costed at \$6.6 million (including capex and opex) plus a contingency of around \$600k. Of this, \$4.5 million in FY26.</p> <p>Project 2 costed at \$3.0 million (including capex and opex) plus a contingency of around \$300k. Of this, \$1.4 million in FY26.</p>
Impact on market participants	<p>Market Participants seeking to register and operate DSPs from the 2024 Reserve Capacity Cycle onwards will need to understand and prepare for many small changes to market processes. Only loads within the same part of the network (as indicated by the TNI) will be able to be associated with a given registered DSP.</p> <p>The modified CRC process will exempt a Market Participant from providing a TNI in their CRC application for a DSP Facility¹. In such cases, the Market Participant will do this later, through the facility registration process, by distributing those Capacity Credits assigned to their certified DSP between one or more registered DSPs. This process must be completed in the year prior to the start of the Capacity Year that they provide the service.</p> <p>Market Participants must prepare for a modified CRC process, registration and Capacity Credit assignment processes. Participants will need to understand how, why and when to consult the constrained TNI lists. They will also need to understand changes to Relevant Demand calculations and their options with respect to informing those calculations, as well as updated Reserve Capacity Testing obligations and associated settlements implications.</p> <p>Market Participants responsible for operating registered DSP facilities will need to understand changes to the RTMS schema that have implications for both making submissions and retrieving submission data from AEMO, where DSP facilities are involved.</p>

1.1 Purpose of the IA

This Implementation Assessment (IA) describes how we (AEMO) propose to implement the ESM rule changes intended to better enable aggregated DSPs to participate in the RCM from the 2026-27 Capacity Year. It outlines the proposed system, process and operational changes and the estimated costs and timeline for implementing these changes. This IA also provides our indicative assessment of what these changes may mean for external stakeholders.

¹ For DSPs with multiple Associated Loads with less than 5 MW of expected capacity.



The purpose of this IA is to inform interested parties of our plans and invite feedback. It will also allow affected stakeholders to develop their own implementation plans and impact assessments, where necessary.

1.2 Consultation and feedback

In the draft version of this IA, we invited feedback on our proposed implementation approach, highlighting the questions posed in **Error! Not a valid bookmark self-reference.** We received feedback from a single MPWG member, which is summarised in Appendix A5, along with our responses. We accepted and actioned the feedback received immediately, prior to publishing the Draft IA on our website. While several minor changes to the document are noted in this Final IA, none of these arose in response to external stakeholder feedback.

Table 1 Specific feedback sought, by chapter

Chapter of this IA	Suggested feedback topics
System	<ul style="list-style-type: none"> Do you agree with the impacts and impact ratings AEMO has identified regarding changes to AEMO’s systems? What changes, deletions or additions would you propose and why? Is AEMO’s proposed design consistent with the policy design set out in the Exposure Draft?
Impacts on published documentation	<ul style="list-style-type: none"> Do you agree with the impacts and impact ratings AEMO has identified regarding changes to procedures? What changes, deletions or additions would you propose and why?
External	<ul style="list-style-type: none"> Do you agree with the impacts and impact ratings AEMO has identified for other Rule Participants? What changes, deletions or additions would you propose and why? Are there implementation options available to AEMO that you consider might warrant consideration that might reduce the impact (including implementation costs) for participants?
Implementation	<ul style="list-style-type: none"> Have the key implementation risks been adequately captured? If no, what is missing or incorrect?

Comments on this Final IA can be sent via email to majorprojects@aemo.com.au.

2 Overview

2.1 The problem / opportunity

A Demand Side Programme (DSP) is a coordinated group of electricity users (comprising at least one or more associated loads), managed by an aggregator, that collectively reduce or shift their energy use to support the power system or participate in energy markets.

During its recent RCM Review, Energy Policy WA identified several barriers to entry for DSPs in the RCM, for example:

- The power grid is constrained in certain locations and DSP aggregators do not necessarily know the location of their associated loads during the certification process, which is two years ahead of when their reserve capacity obligations would commence. This means they are unable to provide the transmission node identifier (TNI), which is required for the modelling of constraints in the Network Access Quantity Model, a key process for the assignment of Capacity Credits.
- Aggregations of smaller commercial and industrial loads, or residential loads, do not have the same predictable load patterns, making the existing static Relevant Demand method not appropriate for measuring dynamic load profiles, export capability, or reflective of actual DSP performance.

These barriers have contributed to an absence of DSPs in the RCM since 2018, even though aggregated DSPs have participated in the recent Supplementary Capacity and Non-Co-optimised Essential System Services processes.

2.2 Response

In September 2023, Energy Policy WA made several ESM Rule changes to implement the outcomes of its Reserve Capacity Mechanism Review. One of the initiatives within that review proposed amending Rules to simplify the process for facilities participating as a DSP within the RCM, but increased the obligations for participation. Commencing from the 2024 Reserve Capacity Cycle, DSP Facilities can apply for certification without providing locational information². However, in the operational year the DSP Facility must provide the locational information when associating loads and operating the Facility.

Changes are required to AEMO's systems and processes to operationalise the amending rules in the WEM. The changes apply from the 2024 Reserve Capacity Cycle and must therefore commence during FY26, in time for go live in October 2026. We propose to implement the new arrangements in two projects as follows.

² For all DSPs with Associated Loads with less than 5 MW of expected capacity.

2.2.1 Project 1

Registration changes including Capacity Management

Before commencement of the Capacity Year, Market Participants intending to operate aggregated DSP will be obligated to:

- Register a DSP Facility at each applicable TNI they intend to contract loads.
- Associate loads according to TNI with the DSP Facility, provided the TNI of the load is not on the excluded list of TNIs. The excluded list of TNIs will be determined annually by AEMO from the previous year's NAQ and published in the year the Capacity Credits were assigned.
- Distribute Capacity Credits, from the quantity of Capacity Credits that were certified in Year 1 of the Reserve Capacity Cycle, to the DSP Facilities registered at applicable TNIs. The Capacity Credits distributions among the DSP's must be supported by sufficient contracted quantities from the Associated Loads.³
- If by 1 July prior to commencement of the Capacity Year, the Market Participant has not distributed all Capacity Credits that were originally certified they will forfeit that capacity and a pro rata amount of DSP Reserve Capacity Security.

Dispatch changes

In response to the above changes, there will also be changes to the following processes related to dispatch of DSP Facilities:

- Update DSP Withdrawal Profiles to DSP Profile Submissions to allow DSP aggregators to include Injection in their submissions.
- Revised dispatch process that considers:
 - Facilities available to be dispatched.
 - Time since last dispatched.
 - Total MW quantity required to restore or maintain Power System Security.
- Forecasting dispatched DSP Facilities in the pre-dispatch horizon and simplifying processes to enable dispatch of large numbers of DSP Facilities.

2.2.2 Project 2

Reserve Capacity Testing changes

DSPs will have additional obligations within the Reserve Capacity Testing arrangements:

³ See Appendix A2 which elaborates on the distinction between a certified DSP and a registered DSP. This distinction can assist with understanding why TNIs are relevant in Year 3 of the Reserve Capacity Cycle, but not before.

- DSPs will no longer be required to conduct a verification test but will have obligations to test in both summer and winter periods.
- Market Participants may request AEMO to schedule a re-test following a failed dispatch or test event, participants can request a maximum of three re-tests per testing period.
- Market Participants will have the option to voluntarily reduce their Capacity Credits but will forfeit their DSP Reserve Capacity Security, pro-rata to reduced Capacity Credits.

Relevant Demand changes

A new dynamic baseline methodology for calculating a DSP's Relevant Demand will be used to measure the DSP's performance against more recent data within the past 50 days, rather than the existing calculation that uses data from the previous Capacity Year:

- The Market Participant may nominate either the Adjusted Baseline or Unadjusted Baseline method used to determine the Relevant Demand. AEMO must use the Unadjusted Baseline Method if a Market Participant has not nominated a method.
- Relevant Demand will only be calculated for Trading Intervals in which a dispatch or testing event has occurred for the DSP. The revised calculation also allows for a DSP to either reduce withdrawal (traditional DSP) or provide net injection to the SWIS.
- Due to the dependency on Meter Data Submissions for the Trading Intervals of the event, Relevant Demand cannot be calculated prior to the dispatch or testing event. Instead, Relevant Demand will be calculated after the Interval Meter Deadline has occurred for the Trading Week and will be recalculated using the most recent meter data for each settlement adjustment.
- Market Participants may submit a capped number of days (20 days per Capacity Year) to be excluded from the selected days in the Relevant Demand calculation, where the day is not representative of the usual operation of the DSP facility.

DSP Refund changes

To ensure there is sufficient incentive for a DSP to deliver on the assigned capacity, Market Participants will face more onerous capacity refund arrangements, including the following.

- Increase the maximum payable capacity refund for a DSP facility to 125% of Capacity Credit payments.
- Calculate a delivery shortfall refund for any shortfall in capacity delivered from a failed dispatch or test event. The refund will apply to all Trading Intervals with capacity obligations from the first interval of the event up until the next Trading Interval in which the DSP facility is to respond to a dispatch or test event. The delivery shortfall quantity will be determined based on the net metered energy of the DSP loads compared to the Relevant Demand baseline, and will use the lowest shortfall of the Trading Intervals of the dispatch or test event period.

- Calculate an association shortfall refund when a Market Participant fails to associate loads with sufficient withdrawal or injection capacity to a DSP. The association shortfall quantity will be based on the net injection or withdrawal quantities of the Associated Loads for the DSP.
- Revise the Trading Interval Refund Rate for DSP facilities to be the Peak Reserve Capacity Price for the facility divided by the minimum number of Trading Intervals DSPs are required to provide capacity obligations in the Capacity Year.
- Allow AEMO to recalculate all capacity refunds for DSP facilities with most recent data in settlement adjustments.

2.2.3 Incidental scope⁴

Additional settlement changes initiated under the RCM Review are also required for the 2026-27 Capacity Year. Following the RCM Review, the Minister made changes to the ESM Rules to allow Separately Certified Components within a single Facility to have different Peak Reserve Capacity Prices. This means Non-Scheduled Facilities and Demand Side Programmes will have facility-based prices, while Scheduled Facilities and Semi-Scheduled Facilities will have component-based prices⁵. Furthermore, the monthly Peak Reserve Capacity Prices have been replaced with daily Peak Reserve Capacity Prices such that the daily price is the same for each Trading Day in a Capacity Year.

To ensure that entities with Peak Capacity Credits receive payments and refunds based on the Entity Daily Peak Reserve Capacity Price of the Facility or Separately Certified Component, AEMO is required to update the following high-level settlement calculations:

- Capacity Provider Payment
- Trading Interval capacity price
- Targeted Reserve Capacity Cost

AEMO notes that these changes are not connected to the Government's DSP Participation reform but are suitable to bundle for delivery along with the scope of Project 2, described above.

Consequential updates to EDP and MSDC

The changes laid out above will result in the creation of new data within new or modified data tables stored in the operational databases of the affected applications. Much of this data will need to be copied and stored in AEMO's Enterprise Data Platform (EDP) to support long term storage and best practice data provisioning for analysis purposes. Some of the data will likely also need to be added to the Market Surveillance Data Catalogue (MSDC). Each of the two projects will engage with the ERA and EPWA at the appropriate time to explain the new

⁴ See Glossary definition of Incidental scope.

⁵ See Chapter 11 ESM Rules definition for "Entity Daily Peak Reserve Capacity Price".

data and discuss their requirements as to which data they will need added to the MSDC and how it should be included.

2.2.4 Not in scope

It is not within the scope of this IA to consider what, if any, new communication requirements might be applicable to DSP Facilities in the future. Communication requirements will be considered in a future engagement with industry on the matter.

The communication equipment and capabilities of Registered Facilities are determined by AEMO and documented in the Communications and Control Systems WEM Procedure⁶. We will engage with Energy Policy WA and industry on potential communication requirements appropriate for DSP Facilities that do not already have SCADA connections and for which SCADA connections may be prohibitively expensive. We expect to commence this engagement in early 2026. AEMO considers that the earliest any new communication requirements for DSP Facilities could apply would be from the start of the 2027 Capacity Year.

2.3 Rule packages


The regulatory changes to enable DSP participation involved many amendments to the ESM Rules, effected through multiple rule packages, as summarised in Table 2 below.

Table 2 Timings – publication and commencement dates

Step	Date
Exposure Draft Rules published (EPWA)	
Electricity System and Market (Tranche 9) Amending Rules 2025	21 October 2025
Electricity System and Market (Tranche 9) Amending Rules 2025 Addendum	10 November 2025
Electricity System and Market (Tranche 10) Amending Rules 2026 ⁷	TBC
Gazetted Amendment Rules (Minister for Energy)	
Wholesale Electricity Market Amendment (Reserve Capacity Reform) Rules 2023	12 December 2023
Wholesale Electricity Market Amendment (Miscellaneous Amendments No 3) Rules 2024	4 October 2024
Wholesale Electricity Market Amendment (RCM Reviews Sequencing) Rules 2025	14 January 2025
Electricity System and Market (Tranche 8) Amending Rules 2025	4 June 2025
Electricity System and Market (Tranche 9) Amending Rules 2025	23 December 2025
Electricity System and Market (Tranche 10) Amending Rules 2026	TBC
Rule Commencement	
Wholesale Electricity Market Amendment (RCM Reviews Sequencing) Rules 2025 , Schedule 2	1 January 2026
Wholesale Electricity Market Amendment (RCM Reviews Sequencing) Rules 2025 , Schedule 3	1 October 2026

⁶ Communications and Control System WEM Procedure, 5 September 2025, https://www.aemo.com.au/-/media/files/stakeholder_consultation/consultations/wa_wem_consultation_documents/2025/aepc_2025_08_09_10/procedure-change-report-documents/aepc202510-communications-and-control-systems-clean.pdf

⁷ Additional rule changes have been identified which AEMO anticipates Energy Policy WA will consult on before the end of 2025.



Step	Date
Electricity System and Market (Tranche 8) Amending Rules 2025 , Schedule 3	1 January 2026
Electricity System and Market (Tranche 8) Amending Rules 2025 , Schedule 4	1 October 2026
Electricity System and Market (Tranche 9) Amending Rules 2025 , Schedule 1	1 January 2025
Electricity System and Market (Tranche 9) Amending Rules 2025 , Schedule 3	1 October 2026
Electricity System and Market (Tranche 10) Amending Rules 2026, Schedule TBC	TBC



3 System impacts

3.1 System impact illustration

Figure 1 on the following page provides a simplified view of the applications and services currently used to support the operation of the SWIS and the WEM. The legend shows the anticipated impact on each system.

For a more detailed explanation on the elements within the diagram, please refer to Appendix A2.

3.2 System impact summary

System impacts are summarised in the table below. Refer to Appendix A3 for guidance on the impact ratings.

Table 3 System impacts

System / Component	Impact rating	Summary of impacts
External APIs	Low	<ul style="list-style-type: none"> • WEM Demand Side Programme API: minor updates to schema to reflect adjusted field names and account for injection, as well as withdrawal. • Real-Time Market Submissions API: new submission validations; schema changes to reflect adjusted field names and account for injection, as well as withdrawal. • Prudential and Settlement Service API: no change to the schema. New variables included in the payload will be described in updates to the WEM, Metering, Settlements and Prudential Calculations technical specification (see following section).
WEMS MPI	Low	<ul style="list-style-type: none"> • Name change to reflect new term: “DSP Profile Submissions”
PaSS	Low	<ul style="list-style-type: none"> • Updates to DSP refunds: <ul style="list-style-type: none"> – Calculate the Peak DSP Association Shortfall. – Calculate the Peak DSP Delivery Shortfall – Revise calculation for Facility Reserve Capacity Deficit Refund for DSP facilities. – Revise calculation for Demand Side Programme Capacity Cost Refund – Revise calculations for Trading Interval Refund Rate for DSPs. • Update data exchange to receive new or modified input data from WEMDE/WEMDEUI, RCM and Registration. • Implement the new Relevant Demand baseline calculations and store results. • Updates to Settlements Statements to include new variables from the new calculations. • In addition to the PaSS changes listed above, which are relatively well understood, AEMO anticipates further changes to allow for handling different Reserve Capacity Prices for Separately Certified Components. At time of writing, AEMO has insufficient detail to evaluate and describe these changes.
Meter Data Warehouse	Low	<ul style="list-style-type: none"> • Store information related to TNI for a meter • Provide the TNI for an Associated Load to other WEM systems for validation.
RCM	Low	<ul style="list-style-type: none"> • Update the CRC application so a Market Participant can identify when a DSPs Associated Loads will be less than 5 MW. • New process and user interface for a Market Participant to allocate Capacity Credits from their certified DSP to many Registered DSPs. • Updates to RC Testing for DSPs: <ul style="list-style-type: none"> – Removal of Verification Tests. – Enable RC Testing for DSPs in the winter testing period. – Updates to RC Testing reports. – Removal of functionality that reduces Capacity Credits following a failed test. • Updates to Relevant Demand: <ul style="list-style-type: none"> – Archive existing Relevant Demand functionality. – Revise the Consumption Deviation Application process for Associated Loads of a DSP. • New process to maintain a constrained TNI list used to validate the association of loads to a DSP.
WEMDE / WEMDE UI	Low	<ul style="list-style-type: none"> • Updates to DSP Dispatch tool: <ul style="list-style-type: none"> – Prioritises DSP dispatch based on available hours, time since last dispatch and total MW required to restore Power system reliability and security – Triggers Dispatch Instruction – Triggers RC test

System / Component	Impact rating	Summary of impacts
WEMS MPI	Low	<ul style="list-style-type: none"> • New process and user interface for a Market Participant to nominate the Relevant Demand method for their DSP. • Standing data change request validations to ensure: <ul style="list-style-type: none"> – a DSP unable to associate a Load if its TNI is deemed constrained by AEMO. – the NMI of each Associated Load corresponds to the TNI of the DSP. • Registration reports to check if an Associated Loads NMI changes TNI during the Capacity Year. • Update data exchange to receive new TNI/NMI information from Meter Data Warehouse.
Real-Time Market Submissions	Low	<ul style="list-style-type: none"> • Modify DSP Profile Submission to account for injection and updated definitions • Update schema to accommodate injections (currently only withdrawal by a DSP is provided for) • Update submission validation logic
Enterprise Data Platform (EDP), incorporating the Market Surveillance Data Catalogue (MSDC)	Low	<ul style="list-style-type: none"> • Publish to the EDP new data as stored in AEMOs database systems – for example, new data fields associated with DSP Refund and Relevant Demand changes. • Add agreed data to the MSDC and implement any necessary data transformations, consistent with outcomes of consultation with ERA and EPWA conducted during the course of Projects 1 and 2.

4 Impacts on published documentation

The DSP Participation initiative will require changes to several pieces of existing published documentation, as detailed in the following table. In this Final IA, we have removed three documents from the list included in the Draft IA, having determined in the intervening time that changes will not be required to these documents (listed in footnote)⁸.

Table 4 Summary of published documents affected by the initiative

Document Name	New/Existing	Complexity of changes	Changes or new content	External briefings or consultation proposed?
WEM Procedure: Network Access Quantity Model	Existing	Low	Update to reflect the process AEMO will following when determining the constrained list of TNIs	Yes. Standard Procedure Change Process, including consultation through AEMO Procedure Change Working Group.
WEM Procedure: Facility Registration, De-Registration and Transfer	Existing	Low	Updates to reflect the process Market Participants will following when associating Non-Dispatchable Loads	As above
WEM Procedure: Consumption Deviation Applications	Existing	Low	Update to reflect the Consumption Deviation Applications process for DSPs	As above
WEM Procedure: Reserve Capacity Testing	Existing	Medium	Update to reflect changes for: <ul style="list-style-type: none"> • Removal of Verification Tests • DSP winter testing requirements • Requesting scheduling of retesting for DSP facilities 	As above
WEM Procedure: Reserve Capacity Security	Existing	Medium	Update to reflect changes for AEMO drawing down on security following: <ul style="list-style-type: none"> • failure to allocate all Peak and Flexible Capacity Credits from the certified DSP to many Registered DSPs • a voluntary reduction of Capacity Credits for a DSP 	As above
WEM Procedure: WEM Submissions	Existing	Low	Update to DSP Submissions formats and processes including updates to reference documentation	As above
Technical Specifications and Guidelines: WEM Dispatch APIs Overview	Existing	Low	Update API information and API endpoints for DSPs	No
WEM, Metering, Settlements and Prudential Calculations technical specification	Existing	Low	Update to reflect new and modified settlement formulae	No
WEM Relevant Demand Calculations technical specification	New	Low	Document the Relevant Demand formulae using existing AEMO standards for settlement calculations	No

⁸ The three documents listed in the Draft IA that AEMO subsequently determined did not require amendment are: WEM Procedure: Demand Side Programme Dispatch; WEM Procedure: Facility Dispatch Process; and WEM Procedure: RCM Constraint Formulation.

Document Name	New/Existing	Complexity of changes	Changes or new content	External briefings or consultation proposed?
WEMS MPI User Guide: Registration	Existing	Low	Update to reflect changes for: <ul style="list-style-type: none"> • Relevant Demand method nomination • NDL Association process 	No
WEMS MPI User Guide: Reserve Capacity Mechanism	Existing	Low	Update to reflect changes for: <ul style="list-style-type: none"> • Market Participants to redistribute Capacity Credits from their certified DSP to many Registered DSPs • DSP RC Testing • Request for days to be excluded from the Relevant Demand calculations for a DSP 	No
WEMS MPI User Guide: Real-time Market Submissions	Existing	Low	Update to reflect changes for DSP Profile Submissions	No
WEMS Real-time Market Submission Specifications	Existing	Low	Update to reflect changes for DSP Profile Submissions	No
WEMS Registration Technical Guide	Existing	Low	Update to reflect changes for Relevant Demand method nomination	No
External API documentation on the Developer Portal	Existing	Low	Update the API documentation to reflect changes for the following APIs <ul style="list-style-type: none"> • Real-time Market Submissions • WEM Demand Side Programmes 	No



5 External impacts

This section identifies a list of proposed changes and AEMO’s view of the impact on different participant types, based on the proposed implementation approach – see “System impacts” and “Impacts on published documentation”. AEMO cannot predict the exact scale or nature of impacts for each participant. Therefore, this section does not identify what specific changes participants may need to make, given the diverse levels of system maturity and automation across participants. AEMO recommends that each participant perform their own detailed analysis based on the information in this IA.

Table 5 Indicative impacts on other Rule Participants and related regulatory entities

Function or Capability	New/Existing	Entity type	Impact rating	Related AEMO functions (WEM)	Remarks
Submit a CRC application	Existing	Market Participant - DSP	Low	RCM	Additional fields required for a DSP
Awareness of the constrained TNI list published by AEMO.	New	Market Participant - DSP	Low	RCM, Registrations	Will be published in the Request for Expression of Interest report annually. MPs must be aware that, when associating loads to DSP facilities impacted by clause 4.10.1B, the TNI of each load must be the same and not appear on the constrained TNI list.
Registration of DSP and association of loads to the same TNI	Existing	Market Participant - DSP	Low	Registrations	Changes will be documented in the <i>WEMS MPI User Guide: Registration</i> . See A2
Allocate Capacity Credits from a certified DSP to many Registered DSPs	New	Market Participant - DSP	Low	RCM	Changes will be documented in the <i>WEM MPI User Guide: Reserve Capacity Mechanism</i> . See A2
Nominate a Relevant Demand method	New	Market Participant - DSP	Low	RCM, Registrations	Changes will be documented in the <i>WEM MPI User Guide: Registration</i>
Responding to RC Test requests in the winter testing period	New	Market Participant - DSP	Low	RCM	Same requirements as a RC Test request in the summer testing period
Understand Relevant Demand calculations	New	Market Participant - DSP	Low	RCM, Prudential and Settlements	The formulae will be documented as for other settlement calculations, though in which published document remains TBD.
Update processes and systems to make a DSP Profile Submission (e.g. submissions/dsp endpoint)	Existing	Market Participant - DSP	Low	RTMS	Making a DSP Profile Submission (replacing the term “DSP Withdrawal Profile”) will need to account for a modified schema that accommodates injection and reflects several field name changes. Market Participant to adjust API calls or use of UI accordingly. Changes will be documented in the <i>WEMS MPI User Guide, Summary of APIM API Endpoints in the WEM and WEMS real-time market submission specification and updated swagger (Developer Portal)</i>
Update processes and systems to parse DSP submission data (e.g. consolidated/dsp endpoint)	Existing	Market Participant - DSP	Low	RTMS	Queries of a DSP facility’s Consolidated Submission will return a payload with a modified schema (see preceding row). Market Participant to adjust their processing of response payloads accordingly. Changes will be documented as described in preceding row.
Update processes and systems to parse DSP dispatch instructions and DSP schedules data (e.g. DSPDispatchInstruction /	Existing	Market Participant - DSP	Low	Dispatch	Queries of DSP Dispatch Instruction endpoints and DSP Schedule endpoints are likely to see minor schema changes (e.g. field name changes and removal of fields).

Function or Capability	New/Existing	Entity type	Impact rating	Related AEMO functions (WEM)	Remarks
preDispatchData endpoint)					
Understand consequences and options following a failed RC Test	Existing	Market Participant - DSP	Low	RCM, Prudential and Settlements	Changes will be documented in the <i>WEM Procedure: Reserve Capacity Testing</i> and <i>WEM Procedure: Reserve Capacity Security</i>
Understand settlement formulae / calculations for DSP capacity refunds	New	Market Participant	Low	Prudential and Settlements	Changes will be documented in in the <i>WEM, Metering, Settlements and Prudential Calculation</i> technical specification
Retrieve and parse settlements data from PASS	Existing	Market Participants	Low	Prudential and Settlements	While new settlement variables will be introduced, we do not expect any change to the API schema and hence Market Participants would continue to be able to retrieve PASS data via API without changes to existing APIs. Market Participants should assess if they need to change how they parse response data payloads – by referring to the <i>WEM, Metering, Settlements and Prudential Calculation</i> technical specification, once updated.
Retrieve and parse data from Market Surveillance Data Catalogue (MSDC)	Existing	ERA and EPWA	Low	RCM, Registration, Prudential and Settlements	Scope to be agreed with end users, but likely to include new data used and outputted by WEMS, RCM and PaSS.
Retrieve and parse data from Market Surveillance Data Catalogue (MSDC)	Existing	ERA and EPWA	Low	RCM; Prudential and Settlements	Scope to be agreed with end users, but likely to include new data used and outputted by RCM and PaSS.
Submit a request to exclude days from the Relevant Demand calculation	New	Market Participant - DSP	Low	RCM; Prudential and Settlements	Changes will be documented in in the <i>WEM MPI User Guide: Reserve Capacity Mechanism</i>

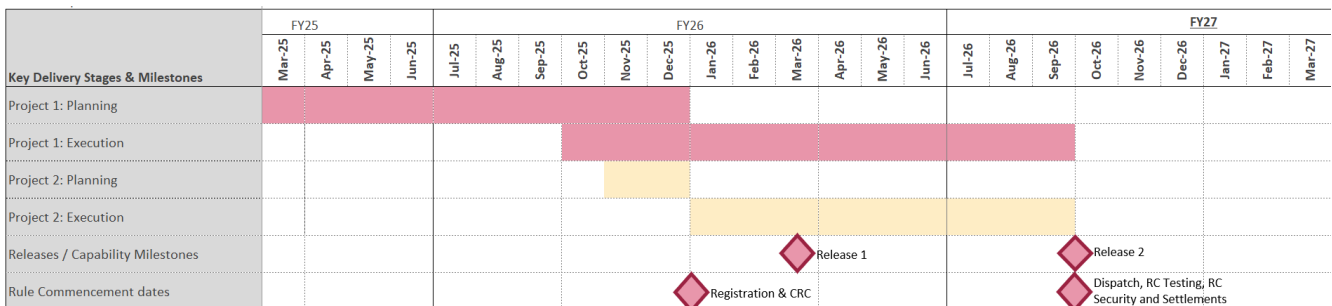
6 Implementation

6.1 Indicative implementation timeline

The figure below sets out an indicative implementation pathway for the changes described in this IA to implement DSP Participation.

- The estimated date for **Release 1** is around March 2026. This release would implement changes from Project 1 relating to Registration and CRC applications.
- Since the Draft IA was published, AEMO determined to delay two minor elements of Release 1 by two months. This “Release 1.1” will cover changes to AEMO’s metering system to store TNI data and to implement automatic compliance checks and is planned for May 2026. This release is considered minor, will have no external impact and hence has not been added to the timeline below.
- The estimated date for **Release 2** is around September 2026. This release would implement changes from Project 1 relating to Dispatch and Project 2 relating to Relevant Demand, Reserve Capacity Testing and Settlements.

Figure 2 Indicative delivery timeline



Delivery timeline notes:

- The above timeline reflects AEMO’s resourcing constraints, rule commencement dates documented in Figure 2 and key dates for the 2026-27 Capacity Year. Actual release dates will depend on AEMO’s actual delivery.
- The period where planning and execution overlaps for Project 1 represents the planning of Dispatch related changes (Release 2) while the Registration, CRC and metering changes commence execution
- The planning and execution of Project 2 is still being finalised. Any changes to the above timings will be communicated through revisions to the WEM Implementation Roadmap.
- Release 1 and Release 2 represent the indicative deployment dates which will include deployments of multiple applications.



6.2 Market readiness approach

AEMO’s approach to supporting market readiness for the DSP Participation releases will be as follows.

- The two projects responsible for implementing the DSP Participation changes will provide a series of preliminary and change overviews progressively to the [WRIG](#). The first of these took place on 26 Feb 2026.
- For each of the two releases AEMO will:
 - provide a pre-release briefing to the [ITF](#). We estimate the timing for this will be between one and three weeks prior to the Pre-Production release.
 - publish release notes and issue a Market Message shortly before the Pre-Production release.
 - issue a Market Advisory shortly before the release to Production.

6.3 Indicative implementation cost – AEMO

The preliminary assessment of the cost to implement Project 1 is \$6.6 million (including capex and opex) plus a contingency allowance on top of this amount of around \$600k. Of this, AEMO expects to spend \$4.5 million in FY26.

The preliminary assessment of the cost to implement Project 2 is \$3.0 million (including capex and opex) plus a contingency allowance of around \$300k. Of this, AEMO expects to spend \$1.4 million in FY26. The total budget estimate for Project 2 is slightly higher than the \$2.7m we provisionally allocated for the project as indicated in the Draft IA. The difference simply reflects the fact that the previous allocation was based on a very preliminary estimate, which has now been replaced with a more detailed estimate.

For updates on the budget, timing or scope of either project delivering the DSP Participation initiative, the reader is referred to the following projects included on the Roadmap:

- Project 1: P03446 – WEM DSP Participation; and
- Project 2: P03395 – Peak Capacity Settlement.

6.4 Implementation risks

Risks identified by AEMO through this IA of DSP Participation changes are outlined in the following table.

Table 6 Initial assessment of implementation risks

Identified risk	Current rating	Mitigation strategies	Residual rating
Market Participants may have insufficient time to complete all registration processes and redistribute Capacity Credits from their certified DSP to many	Medium	Regular engagement with Market Participants leading up to and after production deployment to ensure they are aware and prepared for the	Low

Identified risk	Current rating	Mitigation strategies	Residual rating
Registered DSPs by the regulatory deadline for the 2026-27 Capacity Year (1 July 2026).		changes to the registration processes they have to complete.	
AEMO may have insufficient time and resources to manage the registration processes given the anticipated significant increase in the number of new DSPs.	Medium	Resource planning informed by volume forecasts and predicted efforts. Upfront engagement with DSP aggregators to understand change in processes and encourage early participation in registration processes.	Low
Several AEMO team members considered critical for the efficient delivery of this project may also be required to support delivery of other changes. Prioritising this change could slow or delay AEMO's delivery of other initiatives expected to be implemented within the next 2 years.	Medium	Monitor this resource contention within the WA Reform Program and engage with EPWA to ensure the policy maker has visibility of potential trade-offs.	Medium
Some ESM Rules required for this project are still under development and are not scheduled to be finalised until the first half of the 2026 calendar year, which may impact the cost and schedule of these project	Medium	Continue to work with EPWA on rule drafting for Tranche 10 and ensure they are aware of the delivery risks associated with late changes to the rule drafting and delays in the gazettal.	Medium
AEMO has commenced implementation of system changes based on assumptions from policy documents and draft rules. If following rule gazette these assumptions are incorrect rework may be required impacting cost and schedule of these projects.	High	Continue to work with EPWA on revised rule drafting to be included in an addendum to Tranche 9 and prioritise support for Tranche 10 rule drafting.	Medium

A1. Glossary

This document uses many terms that have meanings defined in the Electricity System and Market Rules (ESM Rules). The ESM Rules meanings are adopted unless otherwise specified.

Table 7 Glossary of terms and acronyms used in this IA

Term	Definition
AEMO	Australian Energy Market Operator: The entity responsible for operating the Wholesale Electricity Market and managing power system security in the SWIS. (ESM Rules, Clause 2.1A)
aggregated DSP	A DSP that is expected to have multiple Associated Loads.
Capex	Capital Expenditure: Funds used by an organization to acquire, upgrade, and maintain depreciable assets such as infrastructure and equipment.
CRC	Certified Reserve Capacity: The amount of capacity assigned to a facility under the Reserve Capacity Mechanism, indicating its contribution to system reliability. (ESM Rules, Clause 4.11)
certified DSP	A DSP Facility that has been assigned Capacity Credits in Year 1 of the Reserve Capacity Cycle. Note that at this point, the Facility may or may not be a Registered Facility. See also Appendix A2.
DSP	Demand Side Programme: A coordinated group of electricity users (at least one or more Associated Loads), managed by an aggregator, that collectively reduce or shift their energy use to support the grid or participate in energy markets. (ESM Rules, Chapter 11)
EDP	Enterprise Data Platform: A centralised system for managing, storing and retrieving AEMO's data.
EPWA	Energy Policy WA: The division of the Department of Energy and Economic Diversification responsible for energy policy and regulatory reform. The ESM Rules confers functions on the Coordinator of Energy and this position leads Energy Policy WA. (ESM Rules, Clause 2.2D)
ERA	Economic Regulation Authority. The independent body responsible for providing economic regulation and compliance oversight in the Western Australian energy sector.
ESM Rules	Electricity System and Market Rules. The WEM and the SWIS are governed by the Electricity System and Market Rules. See https://www.wa.gov.au/government/document-collections/electricity-system-and-market-rules
FUOD	Forecast Unscheduled Operational Demand: The forecast of demand not scheduled in the market, used as an input for market schedules and operational forecasting. (ESM Rules, Clause 7.8.9)
Incidental scope	Incidental scope refers to changes that AEMO may choose to bundle for delivery with the main initiative described in an IA. Incidental scope is usually bundled with other work for reasons of efficiency – for example because the changes involved touch related system functionality. Incidental scope can sometimes involve significant work, however, it will typically represent a relatively small share of the overall cost of the project or initiative.
ITF	Industry Testing Forum: Stakeholder group for management and coordination of industry testing.
MP	Market Participant: An entity registered to participate in the Wholesale Electricity Market, including generators, retailers, and network operators. (ESM Rules, Clause 2.28)
MPWG	Major Projects Working Group: A consultative forum for engagement with industry stakeholders regarding the work program of AEMO's WA Reform Program - the delivery vehicle for AEMO's WA-focussed projects.
MSDC	Market Surveillance Data Catalogue: A catalogue of data used for monitoring and analysing market performance and compliance. (ESM Rules, Clause 10.6)
MW	Megawatt: A measure of instantaneous electrical power.
NAQ	Network Access Quantity: The quantity of network access assigned to a facility at a Transmission Node Identifier (TNI), used for capacity credit assignment and constraint modelling. (ESM Rules, Chapter 11; Part 4, Division 2; e.g., 4.28.2, 4.28.3)
NDL	Non-Dispatchable Load: A load that cannot be dispatched by the market operator; typically, loads that are not subject to dispatch instructions. (ESM Rules, Chapter 11; Part 2, Division 1; e.g., 2.30A.1)
NMI	National Meter Identifier: A unique identifier for an electricity metering installation or connection point, used for registration, data aggregation, and settlement. (ESM Rules, Chapter 11)

Term	Definition
Opex	Operating Expenditure: The ongoing cost for running a product, business, or system.
PaSS	Prudential and Settlement Service: The collection of services responsible for estimating and calculating prudential amounts, calculating settlement amounts, managing Credit Support, as well as other related functions.
RCM	Reserve Capacity Mechanism: The process by which capacity is certified, secured, and allocated to ensure system adequacy. (ESM Rules, Clause 4.1)
Relevant Demand	The calculated demand used to assess DSP performance, based on recent data or baseline methods, and used for settlement and compliance. (ESM Rules, Clause 4.26)
Reserve Capacity Mechanism Operations	The operational processes supporting the Reserve Capacity Mechanism, including certification, allocation, security, and testing. (ESM Rules, Part 4 (Reserve Capacity Mechanism), especially Divisions 1-4)
Reserve Capacity Security	Financial security provided by a Market Participant to ensure delivery of certified capacity, required for new facilities, facilities returning from maintenance, or DSPs with assigned CRC. (ESM Rules, Clauses 4.13, 4.13A)
Reserve Capacity Testing	The process of testing facilities to ensure they can deliver certified capacity, including summer and winter tests, and re-test provisions for DSPs. (ESM Rules, Clause 4.25)
registered DSP	A Registered Facility in the DSP Facility Class. See also Appendix A2.
SCADA	Supervisory Control and Data Acquisition: A system used for monitoring and controlling power system operations in real time. (ESM Rules, Clause 2.36A)
SWIS	South-West Interconnected System: The interconnected electricity network in the south-west of Western Australia. (ESM Rules, Clause 1.1.2)
TNI	Transmission Node Identifier: A unique code identifying a connection point in the transmission network, used for facility registration and NAQ modelling. (ESM Rules, Chapter 11; Part 4, Division 2)
WEM	Wholesale Electricity Market: The market for the wholesale sale and purchase of electricity in the SWIS. (ESM Rules, Clause 1.1.2)
WEM Procedure	A documented procedure supporting the operation of the Wholesale Electricity Market, including processes for registration, testing, security, dispatch, and submissions. (ESM Rules, Part 2, Division 1)
WEMDE	WEM Dispatch Engine: The collection of services that are responsible for input data management, the determination of co-optimised dispatch and the provision of dispatch data to downstream applications.
WEMDE UI	WEM Dispatch Engine User Interface: The user interface of WEMDE, predominantly used by the control room to monitor dispatch outcomes and intervene where necessary.
WEMS MPI	Wholesale Electricity Market System Market Participant Interface: The user interface used by market participants to interact with various AEMO market applications, including the Registration, RTMS, RCM, STEM and PaSS systems.

A2. Key concept: registered DSP versus certified 'DSP'

The concepts of a registered DSP and a certified DSP serve different purposes within the Reserve Capacity Mechanism (RCM).

A2.1 certified DSP

A certified DSP is a DSP that has been assigned Capacity Credits in Year 1 of a Reserve Capacity Cycle. A DSP does not have to be registered to be assigned Capacity Credits, however it may be if it has participated in previous Reserve Capacity Cycles. Depending on the number and size of loads (5MW threshold) expected to be associated to the DSP, the DSP may not be required to specify locational information in their CRC application⁹, meaning the DSP is certified in aggregate without specifying TNI(s) at which one or more DSPs will later be registered.

A2.2 registered DSP

A registered DSP is a Facility that has completed the registration process under the ESM Rules and is recognised as a DSP for the purposes of capacity obligations, dispatch, and settlement. A DSP must be registered before it can participate in the market, and do so prior to 1 October Year 3 of the Reserve Capacity Cycle. To allow dispatch to take network and system constraints into account, registered DSPs cannot aggregate loads from across the network, therefore, under the new arrangements described in this IA:

- A registered DSP must be linked to a specific Transmission Node Identifier (TNI) behind which all its Associated Loads are located.
- A registered DSP will have Associated Loads, that meet the following requirements:
 - The TNI of the load aligns with the TNI of the registered DSP
 - That revenue quality interval metering is in place
 - Evidence of an agreement between the aggregator and the load or evidence that Market Participant owns the loads, including start and end dates for service provision
 - The contracted or service quantity to be provided by the load
 - Confirmation that the load does not or will not participate in IRCR reduction schemes.

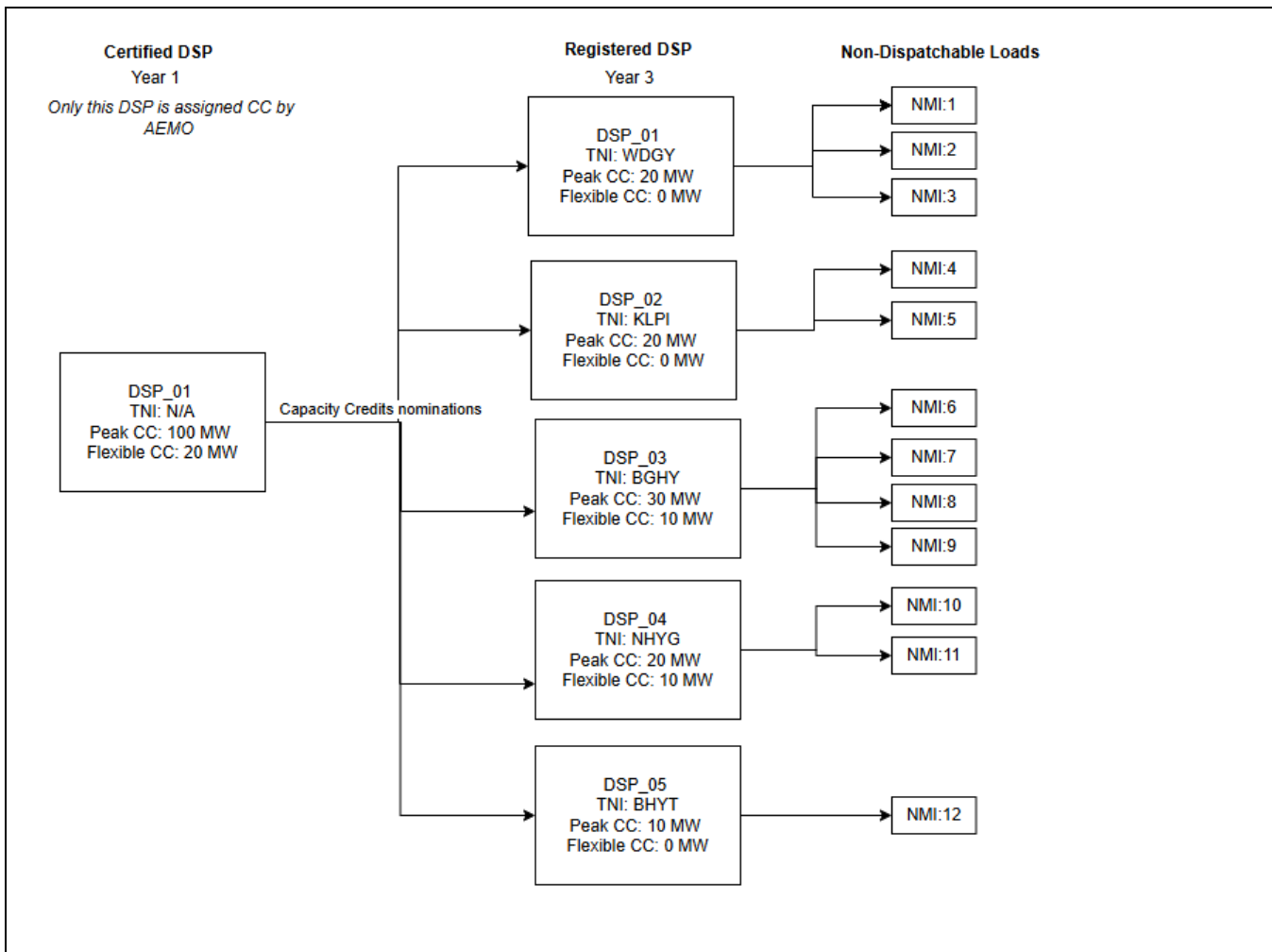
⁹ For DSPs with multiple Associated Loads with less than 5 MW of expected capacity.

If a DSP was certified without specifying the TNI in their CRC application, the Market Participant will be required to apportion the Capacity Credits originally assigned to the certified DSP to one or more registered DSPs prior to 1 July Year 3 of the Reserve Capacity Cycle.

A2.3 Example

The figure below illustrates the difference between the two terms. In Year 1 of the Reserve Capacity Cycle, the DSP is certified for a given number of Capacity Credits. In Year 3, the Market Participant will, register many DSPs. Specifically, a DSP should be registered at each distinct TNI that it intends to have an Associated Load, then associate Non-Dispatchable Loads to those registered DSPs and then apportion the Capacity Credits between registered DSPs.

Figure 3 Schematic representation of certified DSP versus registered DSP





A2.4 Implications for Application Fees

The above changes may increase the complexity and effort involved in completing the process to register DSP facilities. However, pursuant to new clause 2.33.3.(a)ii, AEMO can only charge a single Application Fee for multiple registered Demand Side Programmes being allocated Capacity Credits under new clause 2.29.5AB(a). That is, the ESM Rules ensure that AEMO will only charge the registration Application Fee once, no matter how many DSP facilities are being registered, where they're all linked to the same certified DSP.

This will reduce the barrier to entry in relation to registration fees paid to AEMO.



A3. Impact Rating Guidance

AEMO’s approach for rating impacts from No Impact, Low, Medium or High applies a predefined matrix of impact types, summarised in the table below (see next page).

Table 8 Impact assessment guidance

Dimension considered	Question	High	Medium	Low	None
Impact on documentation	What is the change to a given internal process, WEM Procedure or technical document that AEMO must maintain and/or publish?	Major changes to documentation. E.g. creating a significant new document (or extensively rewriting existing). E.g. document drafting and review extensively involves multiple AEMO teams.	Moderate changes to an existing document. E.g. addition, elimination or reorder of multiple process steps. E.g. document drafting and review involves multiple AEMO teams to some extent.	Minimal change to an existing document. E.g. addition, elimination or reorder of small number of process steps. E.g. document drafting and review is primarily carried out within a single AEMO team.	No changes to documentation
Systems impact – market applications (internal only)	How extensively will the change affect the underlying market applications?	Involves a major change to, or addition of, a market application. E.g. introduction of a new application or decommissioning of existing system	Moderate change to existing market applications. E.g. introducing many new features or significantly increasing non-functional requirements	Minor change to existing market applications. E.g. adding one or several minor new features. E.g. expanding system functionality with only minor adjustments to the application’s data and processing frameworks.	No change market applications
Systems impact – user interfaces (internal and external)	How is the change affecting user interfaces? How easily will the change be integrated by users?	Major changes to user interface(s) e.g. introduction of significant new or decommissioning of existing UI tabs. E.g. many users may not understand the UI without training.	Moderate change to existing interfaces. E.g. significantly expanded range of controls within an existing UI tab. E.g. many users will understand the UI relatively quickly on their own, but without training, some many not.	Minor change to existing interfaces. E.g. small addition of controls within an existing UI tab. E.g. almost all users will understand the UI quickly on their own, even in the absence of training.	No change to user interfaces
Systems impact – system to system interfaces (internal-internal and internal-external)	How is the change affecting the interactions between systems? How easily will changes be accommodated by systems up or downstream?	Major systems interface change. E.g. entirely new machine interface, with unfamiliar data schema or transfer formats must be negotiated or understood. E.g. upstream or downstream limitations significantly constrain or complicate the implementation of the core application changes.	Moderate systems interface change. E.g. the change involves significantly expanding the number of parameters or data-streams to be exchanged, but closely follows established patterns, formats and schemas. E.g. upstream or downstream systems require many changes, but these closely follow established patterns, logic or structures.	Minor system interface change. E.g. the change involves adding a small number of parameters or data-streams, adhering to established patterns, formats and schemas. E.g. upstream or downstream systems require several minor changes.	No system to system interface impacts

A4. System impact illustration: Explanatory notes

The appendix provides a description of each box used in the system impact illustration in Figure 1.

Table 9 System descriptions

Systems	Definition
Constraint Planning	The application and services used by AEMO to create and manage the constraint equations and sets used by WEMDE. This box includes the integration responsible for publishing the constraint equation and set data to WEMDE.
Data Dashboard	A webpage on AEMO's corporate website used to visualise Market Data (see AEMO WEM data dashboard).
Energy Management System	The application that provides key functionality relating to SCADA telemetry and data retention, AGC control, network modelling and the dispatch of facilities, while also providing a real time visual representation of the current power system conditions. It provides data to and consumes data from WEMDE and WEMDE UI.
Enterprise Data Platform	A centralised system for managing, storing and retrieving AEMO's data At present, AEMO ingests all market data to the Enterprise Data Platform with a few exceptions. This data is used for internal reporting and provision of the MSDC Requirements List through the MSDC to the ERA and EPWA
External APIs	The suite of APIs used by Market Participants to make submissions to or extract market data from AEMO. This includes functionality relating to Real-Time Market Submissions, Outage Management, Reserve Capacity, STEM & Bilaterals, Settlements and WEMDE UI.
Forecasting	The suite of applications and services responsible for the collection of input data (e.g. from external weather providers, SCADA etc), creation and management of forecasting models and the integration to downstream consumers of forecast data such as WEMDE and WEMDE UI.
Meter Data Warehouse	The application responsible for collecting meter data from the Meter Data Agent and performing calculations to ensure the data is settlement ready. This box also represents the integration from the Meter Data Warehouse to Settlements.
Notifications	The service used by various applications to issue automated email notifications to Market Participants to confirm the status or progress of applications/submissions (e.g. Outage Plan submissions)
Outage Management	The application and services manage Outage Plans and Outage Intention Plans. AEMO also uses this system to manage the Approval / Rejection of the Outage Plans. This box also represents the integration from Outage Management to Reserve Capacity, STEM & Bilaterals and WEMDE UI, but excludes the user interface and APIs that Market Participants use to make or obtain Outage Plan or Outage Intention Plan submissions from AEMO.
Public Data Site	A webpage on AEMO's corporate website used to publish public Market Data as required under the ESM Rules (see AEMO Market data).
Real-Time Market Submissions	The application and services responsible for the management of Market Participant Real-Time Market Submissions to be used by WEMDE in the co-optimisation of the six Market Services (i.e. energy and five types of FCESS). This box excludes the user interface and APIs that Market Participants use to make or obtain submissions from AEMO.
Registration	The application and services used by Market Participants to maintain their participant and facility level registration information, including standing data. This box also encompasses the APIs and services that facilitate the sharing of registration data to downstream systems but excludes the user interface that Market Participants use to update and obtain their Registration data.
Reserve Capacity	The suite of applications and services responsible for supporting the Reserve Capacity Mechanism including areas such as Certified Reserve Capacity, Capacity Credit Allocations, Individual Reserve Capacity Requirement, Network Access Quantities, and Reserve Capacity Testing. This box also represents the integration from Reserve Capacity to Outage Management and WEMDE UI but excludes the user interface and APIs that Market Participants use to make or obtain Outage Plan or Outage Intention Plan submissions from AEMO.
SCADA Inputs	The collection of systems and infrastructure within the SWIS that enable the provision of SCADA data to WP's EMS The systems and infrastructure that form SCADA Inputs are not owned or controlled by AEMO.

Systems	Definition
Settlements	The collection of applications and services that enable AEMO to perform its settlement function as prescribed by the ESM rules. This box excludes the user interface and APIs that market participants use to obtain settlement data.
STEM & Bilaterals	The application and services responsible for the management of Bilateral and STEM submissions from Market Participants and the calculation of the STEM Auction. This box is also responsible for the provision of the STEM Auction results to Settlements but excludes the user interface and APIs that Market Participants use to make or obtain Outage Plan or Outage Intention Plan submissions from AEMO.
WEMDE	The collection of services that are responsible for input data management, the determination of co-optimisation dispatch and the provision of dispatch data to downstream applications.
WEMDE UI	The user interface of WEMDE, predominantly used by the control room to monitor dispatch outcomes and intervene where necessary. This application and associated services are also responsible for the provision of settlement data to Settlements but excludes the APIs that Market Participants use to obtain dispatch related data.
WEMS MPI	The WEM User Interface (i.e the WEMS MPI) used by Market Participants to make submissions to or extract market data from AEMO. This includes functionality relating to Registration, Real-Time Market Submissions, Outage Management, Constraint Planning (AEMO only), Reserve Capacity, STEM & Bilaterals, Settlements and WEMDE UI.
WP's EMS	The Energy Management System used by Western Power and the source of SCADA data for AEMO's systems that support the operation of the SWIS and the WEM. This system is not owned or controlled by AEMO.



A5. MPWG Feedback

The feedback provided by MPWG members in response to the Draft IA is compiled in the table below, along with AEMO's response to each issue raised.

Table 10 Feedback received on Draft IA and AEMO's responses

Ref	Short description	Details	Raised by (Organisation)	AEMO Response
1	Omission of some impacts on externally facing systems	<p>In Section 3.2 System impact summary [in the Draft IA], the only external API listed is 'DSP Dispatch API'.</p> <p>I question whether AEMO has fully assessed systems impacted as anticipate that given the description of some changes that APIs associated with PaSS and Real-Time Market Submissions Will be impacted.</p> <p>I note, maybe AEMO consider this as being covered under the relevant System/Component, i.e. changes to Settlement APIs are covered in the assessment of PaSS, however this is not clear to me in reading the section.</p>	Entego	<p>Entego correctly identified omissions in the case of RTMS impacts and AEMO accepts that the Draft IA was not as clear as it could have been in describing external impact of changes to PaSS.</p> <p>In response, AEMO added details under Sections 3, 4 and 5 of the IA. Of these, the most significant changes are the following.</p> <ul style="list-style-type: none"> • Changes to the RTMS schema – submissions once taking the form of a DSP Withdrawal Profile will reflect the slightly modified structure of a DSP Profile. • Clarifying that while new settlement variables will be introduced, AEMO plans no changes to the API schema and no changes to existing APIs. <p>AEMO reissued the Draft IA to MPWG members on 3 December 2025 in case the additional information could be useful for the purposes of considering their feedback. The consultation period remained open for another seven business days after the document was reissued.</p>