

The following table provides the information on the operation of the Swing Service market on the North Metro and South Metro sub-networks over a 13 month rolling window.

Month	Metro-South Sub-Network		Metro-North Sub-Network	
	Peak SS South-Metro	Average SS South-Metro	Peak SS North-Metro	Average SS North-Metro
October 2023	945	67	386	27
November 2023	1,188	65	677	49
December 2023	1,947	233	146	27
January 2024	4,628	986	251	31
February 2024	828	84	164	19
March 2024	3,145	202	90	12
April 2024	2,441	273	69	9
May 2024	1,488	152	326	25
June 2024	1,022	70	159	15
July 2024	2,401	183	1,242	89
August 2024	1,911	107	1,398	89
September 2024	78	50	273	52
October 2024	1,900	86	602	48
<b>Average</b>	<b>2-year</b>	<b>101</b>	<b>2-year</b>	<b>160</b>

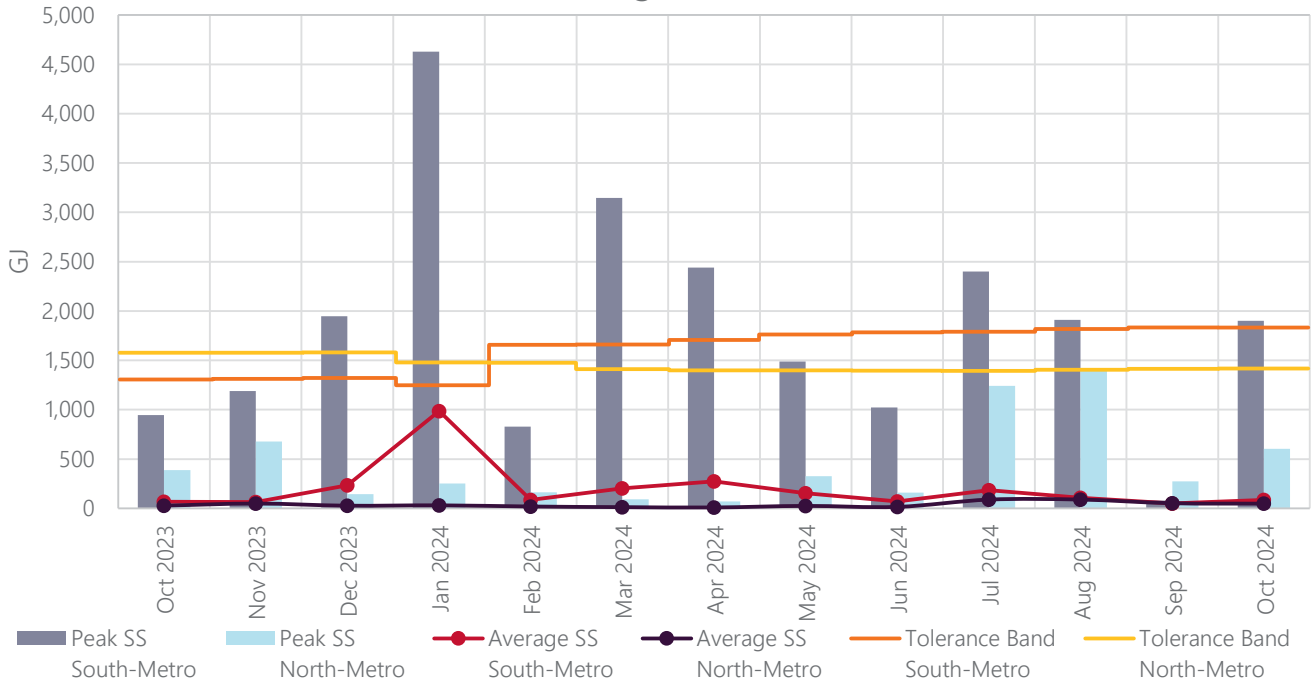
#### North Metro

Swing service volumes in the North Metro sub-network were at relatively low levels for the month of October 2024 with the exception of spike on gas day 2 October. The moderate swing service for gas day 2 October was contributed by Alinta Energy. Alinta Energy's user's pipeline nomination amount (UPNA) was lower than the user's deemed withdrawal (UDW) due to difference between submitted UPNA and user's allocation instruction (UAI). Alinta Energy advised the mismatch between UPNA and UAI was due to failure of Alinta Energy's intraday UPNA nomination on gas day 2 October.

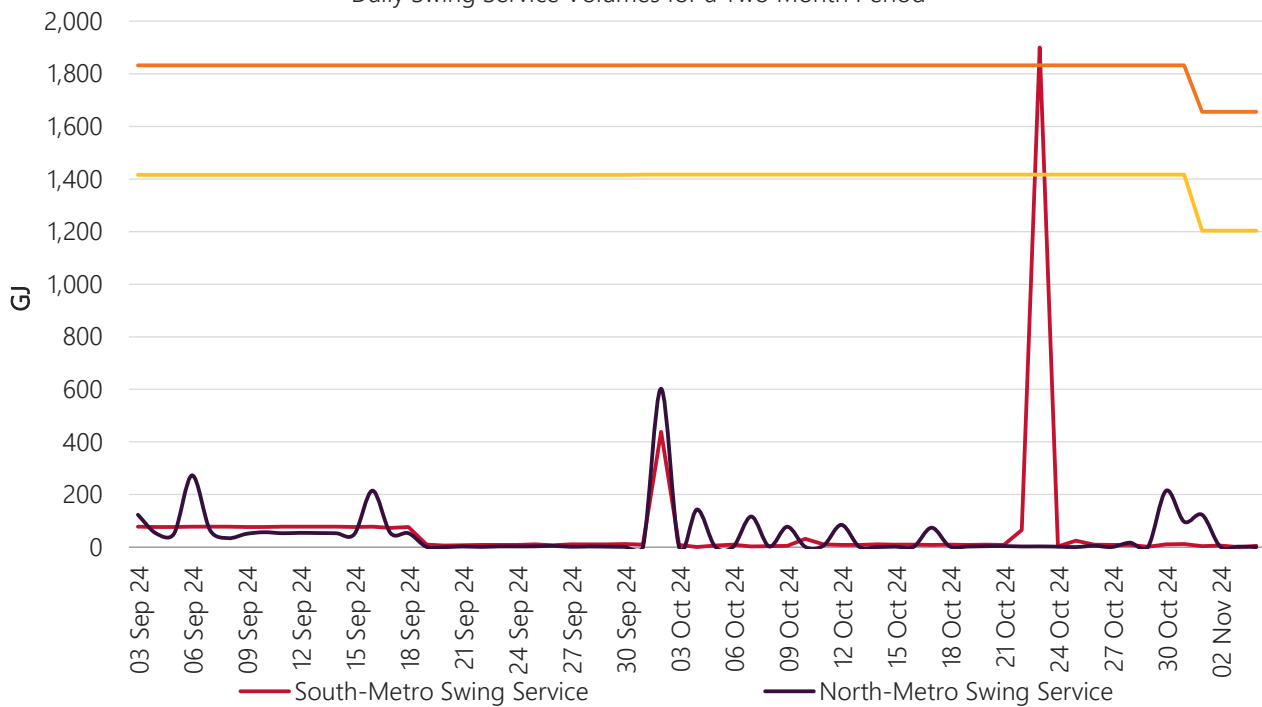
#### South Metro

Swing service volumes in the South Metro sub-network were at relatively low levels for the month of October 2024 with the exception of spikes on gas days 2 and 23 October. For gas day 2 October, the moderate swing service was contributed by Alinta Energy. Alinta Energy's UPNA was lower than the UDW due to difference between submitted UPNA and UAI. Alinta Energy advised the mismatch between UPNA and UAI was due to failure of Alinta Energy's intraday UPNA nomination on gas day 2 October. For gas day 23 October, the high swing service was due to APA's pipeline injection lower than the total UPNA. APA advised AEMO that APA experienced an issue involving the South Metro delivery stream which caused a shortfall. A clause 255 notice was not issued as the shortfall amount was less than 15% of the nameplate of the pipeline.

13 Month Swing Service Results



Daily Swing Service Volumes for a Two Month Period



Terms:

- Peak SS means the maximum amount of Swing Service recorded on a day during that month.
- Average SS means the average amount of Swing Service for any day in that month.
- Peak Trend is the linear trend of the Peak SS data, using the least squares method.
- Average Trend is the linear trend of the Average SS data, using the least squares method.
- Tolerance Band is a marker – AEMO will investigate and report on any Swing Service spikes that are larger than the Tolerance Band. The Tolerance Band is defined as a volume equal to the mean amount of Swing Service over the last 2 years plus 3 standard deviations.