

The following table provides the information on the operation of the Swing Service market on the North Metro and South Metro sub-networks over a 13 month rolling window.

| Month          | Metro-South Sub-Network |                           | Metro-North Sub-Network |                           |
|----------------|-------------------------|---------------------------|-------------------------|---------------------------|
|                | Peak SS<br>South-Metro  | Average SS<br>South-Metro | Peak SS<br>North-Metro  | Average SS<br>North-Metro |
| March 2023     | 724                     | 58                        | 1,497                   | 167                       |
| April 2023     | 1,039                   | 97                        | 3,452                   | 997                       |
| May 2023       | 1,396                   | 174                       | 3,319                   | 131                       |
| June 2023      | 1,908                   | 159                       | 93                      | 6                         |
| July 2023      | 5,220                   | 183                       | 3,507                   | 130                       |
| August 2023    | 16                      | 9                         | 314                     | 29                        |
| September 2023 | 1,930                   | 105                       | 429                     | 29                        |
| October 2023   | 945                     | 67                        | 386                     | 27                        |
| November 2023  | 1,188                   | 65                        | 677                     | 49                        |
| December 2023  | 1,947                   | 233                       | 146                     | 27                        |
| January 2024   | 4,628                   | 986                       | 251                     | 31                        |
| February 2024  | 828                     | 84                        | 164                     | 19                        |
| March 2024     | 3,145                   | 202                       | 90                      | 12                        |
| <b>Average</b> | <b>2-year</b>           | <b>101</b>                | <b>2-year</b>           | <b>125</b>                |

#### North Metro

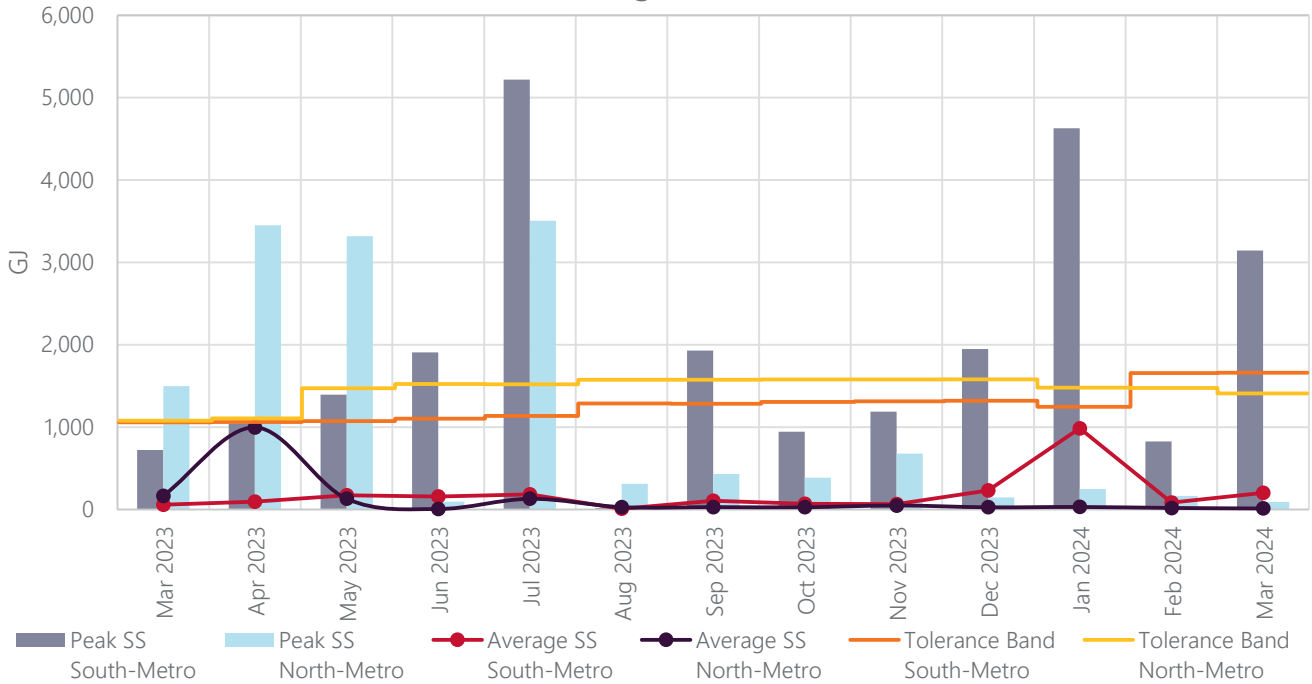
Average and peak swing service volumes in the North Metro sub-network were at relatively low levels for the month of March 2024.

#### South Metro

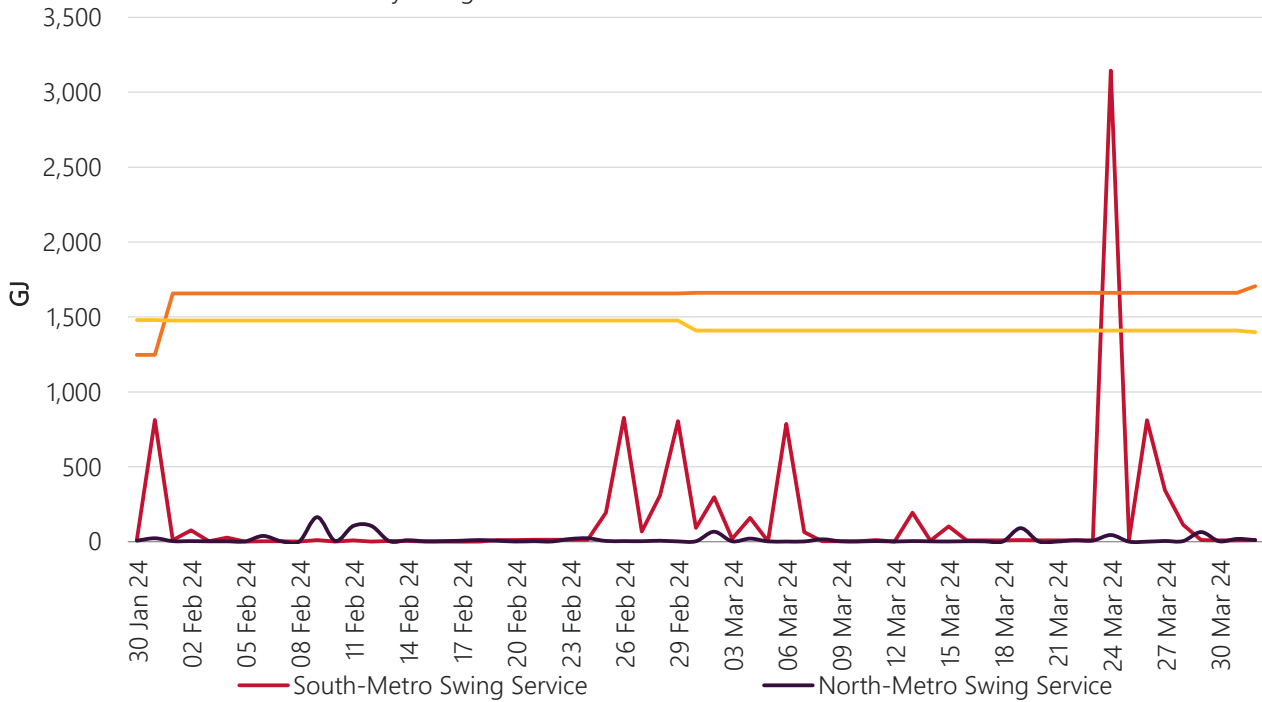
Swing service volumes in the South Metro sub-network were at relatively low levels for the month of March 2024 with the exception of spikes on gas days 6, 24 and 26 March.

- For gas day 6 March, the swing service was largely contributed by Agora Retail. Agora Retail did not include its swing repayment quantity (SRQ) in its user's pipeline nomination amount (UPNA) and its user's deemed withdrawal (UDW) was lower than its UPNA. This was caused by a system sequencing issue with submission of multiple UPNA and UAI (user's allocation instruction) files. This system issue has been resolved.
- For gas day 24 March, the swing service was contributed by Agora Retail due to its UDW was lower than its UPNA. This was caused by a significant reduction of consumption by a customer. AEMO will issue an apparent breach notice when the investigation is complete.
- For gas day 26 March, the swing service was contributed by Perth Energy and Synergy. Synergy's UAI for the Parmelia pipeline was higher than its total withdrawal and Perth Energy did not include the correct SRQ in its UPNA. Perth Energy is investigating this issue.

13 Month Swing Service Results



Daily Swing Service Volumes for a Two Month Period



Terms:

- Peak SS means the maximum amount of Swing Service recorded on a day during that month.
- Average SS means the average amount of Swing Service for any day in that month.
- Peak Trend is the linear trend of the Peak SS data, using the least squares method.
- Average Trend is the linear trend of the Average SS data, using the least squares method.
- Tolerance Band is a marker – AEMO will investigate and report on any Swing Service spikes that are larger than the Tolerance Band. The Tolerance Band is defined as a volume equal to the mean amount of Swing Service over the last 2 years plus 3 standard deviations.