

The following table provides the information on the operation of the Swing Service market on the North Metro and South Metro sub-networks over a 13 month rolling window.

Month	Metro-South Sub-Network		Metro-North Sub-Network	
	Peak SS South-Metro	Average SS South-Metro	Peak SS North-Metro	Average SS North-Metro
January 2024	4,628	986	251	31
February 2024	828	84	164	19
March 2024	3,145	202	90	12
April 2024	2,441	273	69	9
May 2024	1,488	152	326	25
June 2024	1,022	70	159	15
July 2024	2,401	183	1,242	89
August 2024	1,911	107	1,398	89
September 2024	78	50	273	52
October 2024	1,900	86	602	48
November 2024	2,555	160	646	46
December 2024	3,804	396	908	97
January 2025	830	183	871	98
Average	2-year	95	2-year	174

North Metro

Swing service volumes in the North Metro sub-network were at relatively low levels for the month of January 2025 with the exception of moderate spike on gas day 31 January. For gas day 31 January, the swing service was contributed by Agora Retail. Agora Retail did not provide user's pipeline nomination amount (UPNA). AEMO is investigating the swing service on gas day 31 January with Agora Retail.

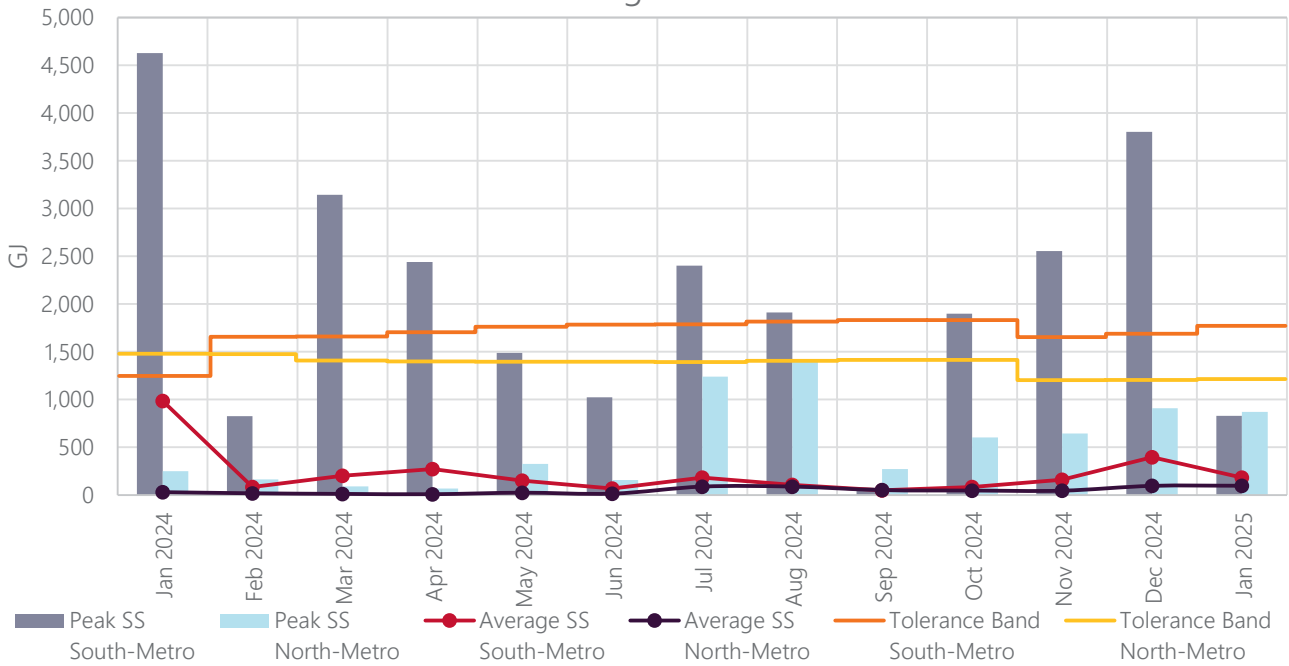
South Metro

Swing service volumes in the South Metro sub-network were at relatively low levels for the month of January 2025 with the exception of moderate spikes on gas days 9 and 27 January.

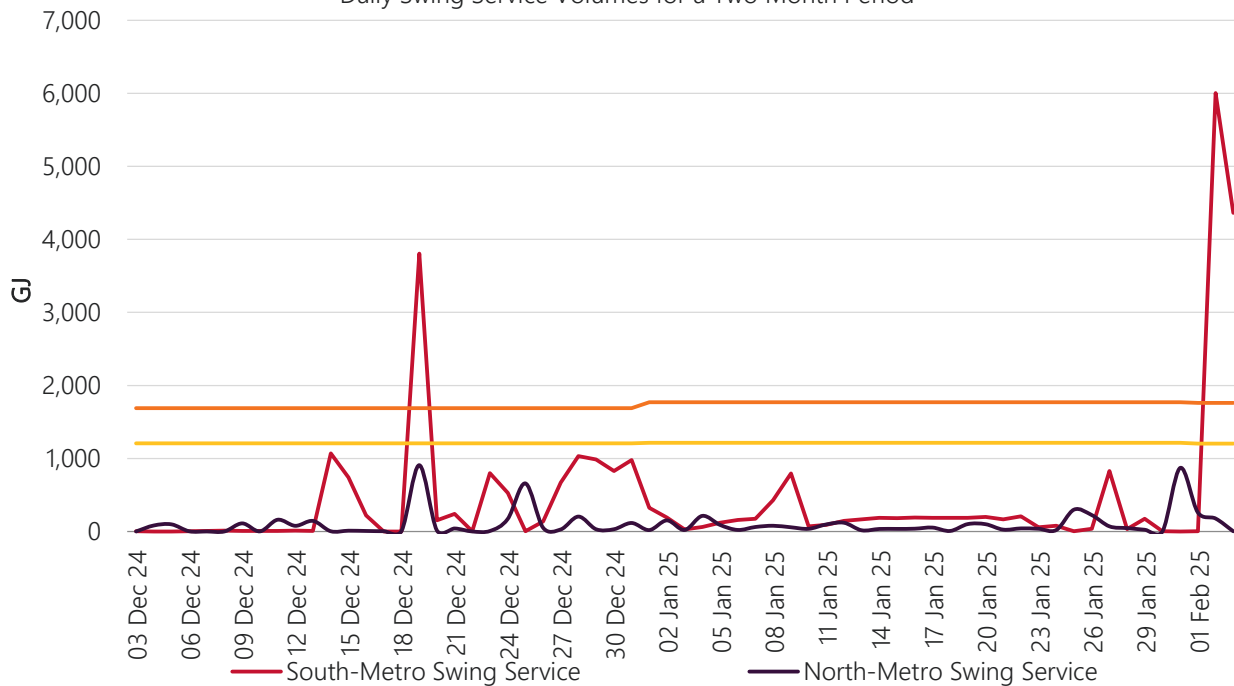
For gas day 9 January, the swing service was mainly contributed by Agora Retail. Agora Retail did not include swing repayment quantity (SRQ) in their UPNA and Agora Retail's user's estimated total withdrawal (UETW) was lower than their UPNA. Agora Retail had a problem downloading their SRQ files due to a connectivity issue. The connectivity issue has been resolved now.

For gas day 27 January, the swing service was contributed by Agora Retail. Agora Retail's UETW was lower than their UPNA.

13 Month Swing Service Results



Daily Swing Service Volumes for a Two Month Period



Terms:

- Peak SS means the maximum amount of Swing Service recorded on a day during that month.
- Average SS means the average amount of Swing Service for any day in that month.
- Peak Trend is the linear trend of the Peak SS data, using the least squares method.
- Average Trend is the linear trend of the Average SS data, using the least squares method.
- Tolerance Band is a marker – AEMO will investigate and report on any Swing Service spikes that are larger than the Tolerance Band. The Tolerance Band is defined as a volume equal to the mean amount of Swing Service over the last 2 years plus 3 standard deviations.