

The following table provides the information on the operation of the Swing Service market on the North Metro and South Metro sub-networks over a 13 month rolling window.

Month	Metro-South Sub-Network		Metro-North Sub-Network	
	Peak SS South-Metro	Average SS South-Metro	Peak SS North-Metro	Average SS North-Metro
August 2023	16	9	314	29
September 2023	1,930	105	429	29
October 2023	945	67	386	27
November 2023	1,188	65	677	49
December 2023	1,947	233	146	27
January 2024	4,628	986	251	31
February 2024	828	84	164	19
March 2024	3,145	202	90	12
April 2024	2,441	273	69	9
May 2024	1,488	152	326	25
June 2024	1,022	70	159	15
July 2024	2,401	183	1,242	89
August 2024	1,911	107	1,398	89
Average	2-year	97	2-year	154

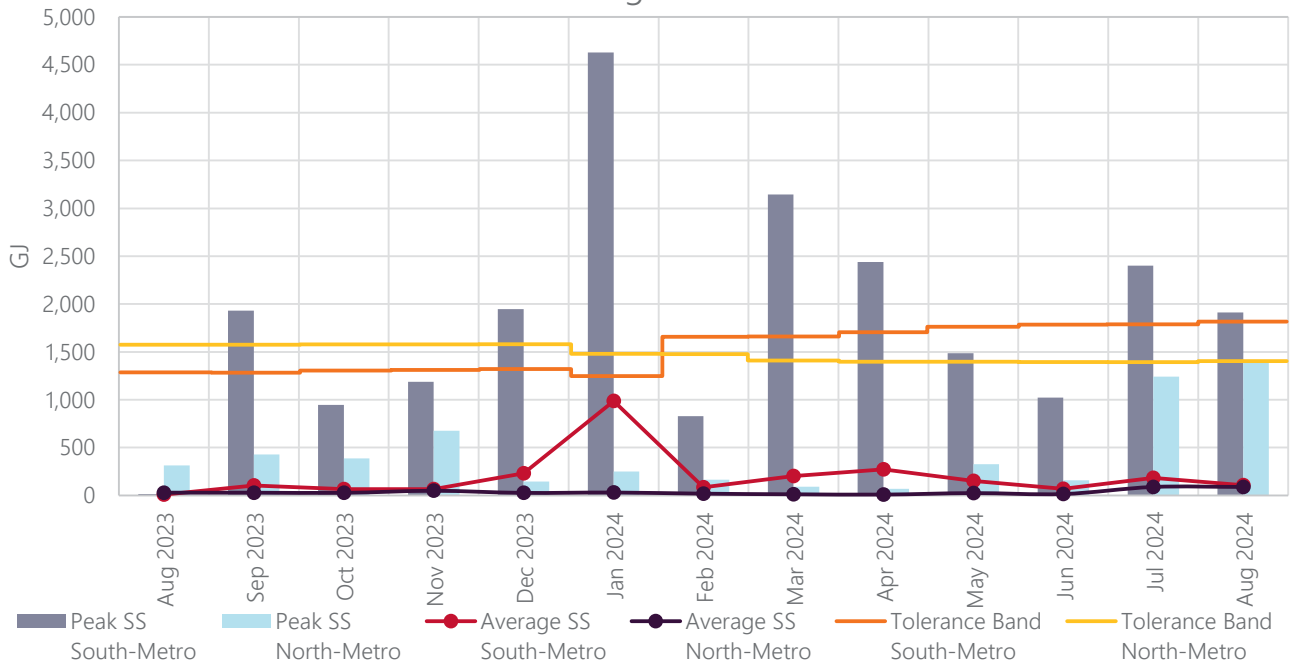
North Metro

Swing service volumes in the North Metro sub-network were at relatively low levels for the month of August 2024 with the exception of spike on gas day 18 August. For gas day 18 August, the swing service was due to APA's pipeline injection higher than the total user's pipeline nomination amount (UPNA). ATCO advised AEMO that APA had a system failure and did not send pipeline injection data for gas day 18 August to ATCO before 10.30am (WST). Hence the initial pipeline injection data provided by ATCO to AEMO which was used for the swing service calculation for North and South Metro sub-networks was estimated. ATCO provided revised pipeline injection data to AEMO after the swing service calculation.

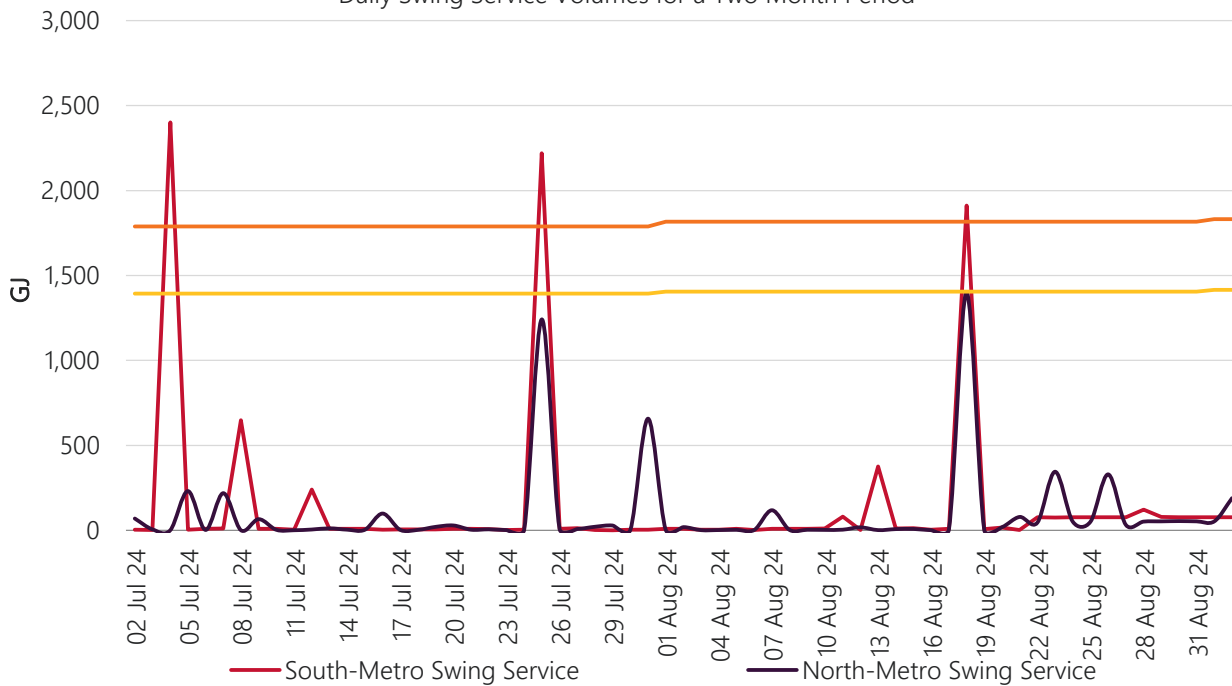
South Metro

Swing service volumes in the South Metro sub-network were at relatively low levels for the month of August 2024 with the exception of spike on gas day 18 August. For gas day 18 August, the swing service was due to APA's pipeline injection higher than the total UPNA. ATCO advised AEMO that APA had a system failure and did not send pipeline injection data for gas day 18 August to ATCO before 10.30am (WST). Hence the initial pipeline injection data provided by ATCO to AEMO which was used for the swing service calculation for North and South Metro sub-networks was estimated. ATCO provided revised pipeline injection data to AEMO after the swing service calculation.

13 Month Swing Service Results



Daily Swing Service Volumes for a Two Month Period



Terms:

- Peak SS means the maximum amount of Swing Service recorded on a day during that month.
- Average SS means the average amount of Swing Service for any day in that month.
- Peak Trend is the linear trend of the Peak SS data, using the least squares method.
- Average Trend is the linear trend of the Average SS data, using the least squares method.
- Tolerance Band is a marker – AEMO will investigate and report on any Swing Service spikes that are larger than the Tolerance Band. The Tolerance Band is defined as a volume equal to the mean amount of Swing Service over the last 2 years plus 3 standard deviations.