

The following table provides the information on the operation of the Swing Service market on the North Metro and South Metro sub-networks over a 13 month rolling window.

Month	Metro-South Sub-Network		Metro-North Sub-Network	
	Peak SS South-Metro	Average SS South-Metro	Peak SS North-Metro	Average SS North-Metro
April 2023	1,039	97	3,452	997
May 2023	1,396	174	3,319	131
June 2023	1,908	159	93	6
July 2023	5,220	183	3,507	130
August 2023	16	9	314	29
September 2023	1,930	105	429	29
October 2023	945	67	386	27
November 2023	1,188	65	677	49
December 2023	1,947	233	146	27
January 2024	4,628	986	251	31
February 2024	828	84	164	19
March 2024	3,145	202	90	12
April 2024	2,441	273	69	9
Average	2-year	97	2-year	132

North Metro

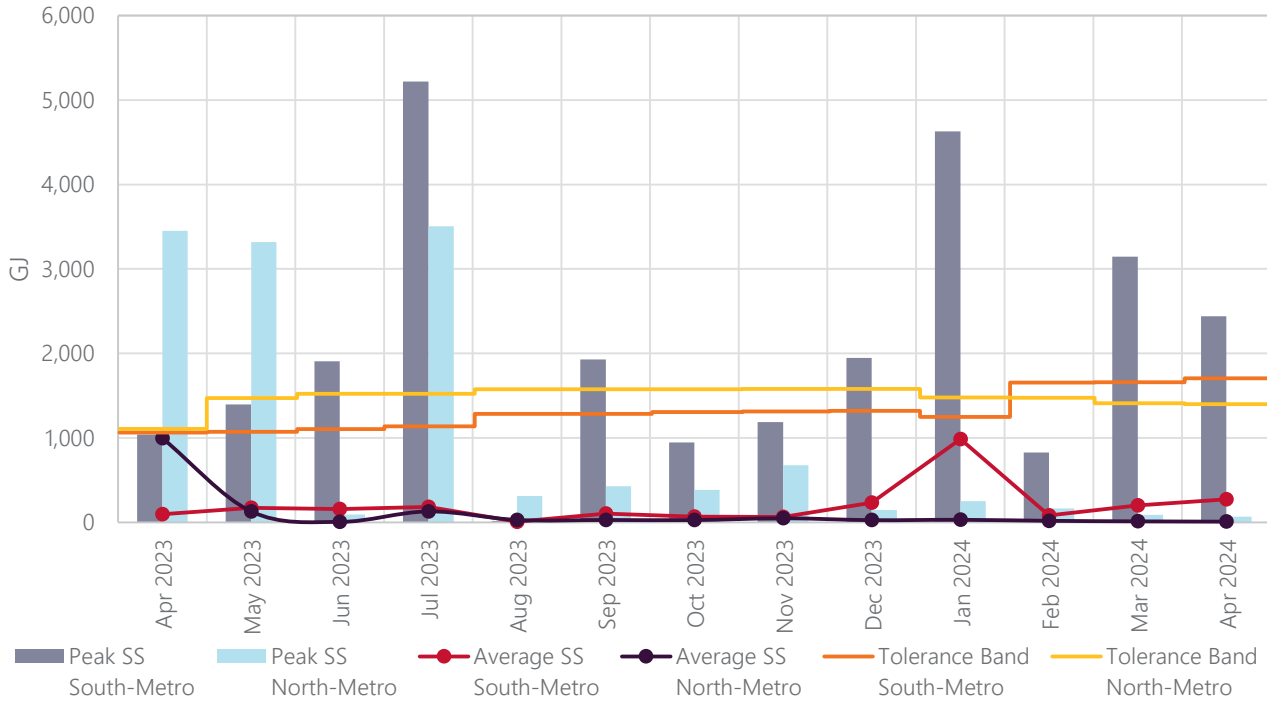
Average and peak swing service volumes in the North Metro sub-network were at relatively low levels for the month of April 2024.

South Metro

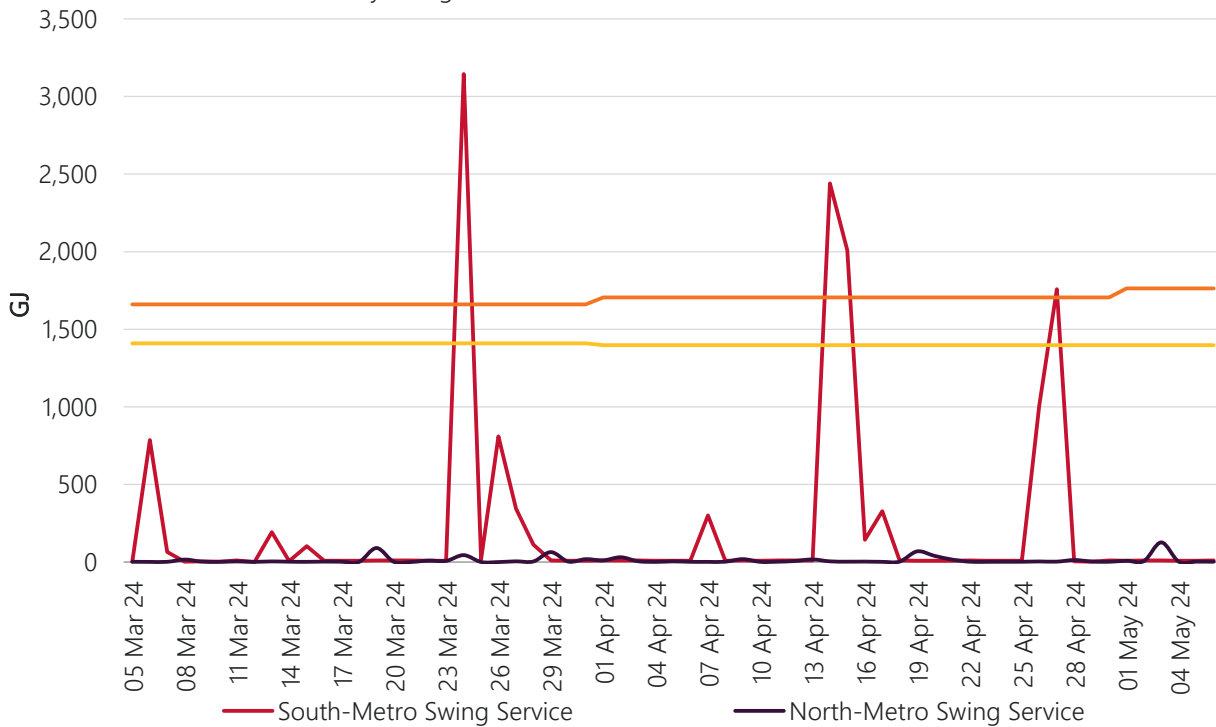
Swing service volumes in the South Metro sub-network were at relatively low levels for the month of April 2024 with the exception of spikes on gas days 14, 15, 26 and 27 April.

- For gas day 14 April, the swing service was caused by duplicate interval metering data provided by ATCO. This issue has been resolved. AEMO is investigating this issue with ATCO.
- For gas day 15 April, the swing service was contributed by Agora Retail due to Agora Retail didn't update its user's allocation instruction (UAI) to reflect the revised UPNA. This event is related to the duplicate interval metering data provided by ATCO. An apparent breach notice was issued on 24 April.
- For gas day 26 and 27 April, the swing service was mainly contributed by Agora Retail due to its user's deemed withdrawal (UDW) was lower than its UPNA. An apparent breach notice was issued on 7 May.

13 Month Swing Service Results



Daily Swing Service Volumes for a Two Month Period



Terms:

- Peak SS means the maximum amount of Swing Service recorded on a day during that month.
- Average SS means the average amount of Swing Service for any day in that month.
- Peak Trend is the linear trend of the Peak SS data, using the least squares method.
- Average Trend is the linear trend of the Average SS data, using the least squares method.
- Tolerance Band is a marker – AEMO will investigate and report on any Swing Service spikes that are larger than the Tolerance Band. The Tolerance Band is defined as a volume equal to the mean amount of Swing Service over the last 2 years plus 3 standard deviations.