

WEM Procedure: RCM Limit Advice Requirements

Prepared by: AEMO

Document ref: WEM Procedure: RCM Limit Advice Requirements

Version: 2.0

Effective date: 20 June 2025

Status: FINAL

Approved for distribution and use by:

Approved by: Martin Maticka

Title: Group Manager – WA Operations

Date: 20 June 2025

aemo.com.au

New South Wales | Queensland | South Australia | Victoria | Australian Capital Territory | Tasmania | Western Australia

Australian Energy Market Operator Ltd ABN 94 072 010 327

Version release history

Version	Effective Date	Summary of Changes
1.0	15 March 2022	Transitional Procedure for RCM Limit Advice Requirements.
2.0	20 June 2025	To clarify the form and format of RCM Limit Advice requirements; to improve alignment with the Wholesale Electricity Market Amendment (Reserve Capacity Reform) Rules 2023 and the Wholesale Electricity Market Amendment (RCM Reviews Sequencing) Rules 2025; and to undertake minor editorial improvements.

IMPORTANT NOTICE – EXPLANATORY NOTES

Disclaimer

Explanatory notes included in this document as shaded in-line text are provided for explanatory purposes only to assist with comprehension and readability. The information contained in these explanatory notes does not constitute legal or business advice and should not be relied on as a substitute for obtaining detailed advice about the *Electricity Industry Act 2004* (WA), the ESM Rules, or any other applicable laws, procedures or policies. AEMO has made reasonable efforts to ensure the quality of the information, but cannot guarantee its accuracy or completeness.

Accordingly, to the maximum extent permitted by law, AEMO and its officers, employees and consultants involved in the preparation of this document:

- make no representation or warranty, express or implied, as to the currency, accuracy, reliability or completeness of the explanatory information in this document; and
- are not liable (whether by reason of negligence or otherwise) for any statements or representations in this document, or any omissions from it, or for any use or reliance on the information in it.

Contents

1.	Introduction	4
1.1.	Purpose and scope	4
1.2.	Definitions	6
1.3.	Interpretation	6
1.4.	Related documents	7
1.5.	Communications and provision of information	7
2.	Format, form and manner	8
2.1.	Provision of information to a Network Operator by AEMO	8
2.2.	Provision of information to AEMO by a Network Operator	8
3.	Information requirements	10
3.1.	Application of this paragraph	10
3.2.	Estimated proportion of peak demand	10
3.3.	Thermal Network Limits	11
3.4.	Changes to large loads	12
3.5.	Network configuration	12
3.6.	Substation names and Transmission Node Identifiers	14
3.7.	Changes to the RCM Limit Advice	14
4.	Requesting additional information	15
Appendix A.	Relevant clauses of the ESM Rules	16

Tables

Table 1	Definitions	6
Table 2	Related documents.....	7
Table 3	Required format and form for the provision of information under clauses 4.4B.5 and 4.4B.9	9
Table 4	Examples of explanations required under paragraph 3.7.1(d)	15
Table 5	Relevant clauses of the ESM Rules	16

1. Introduction

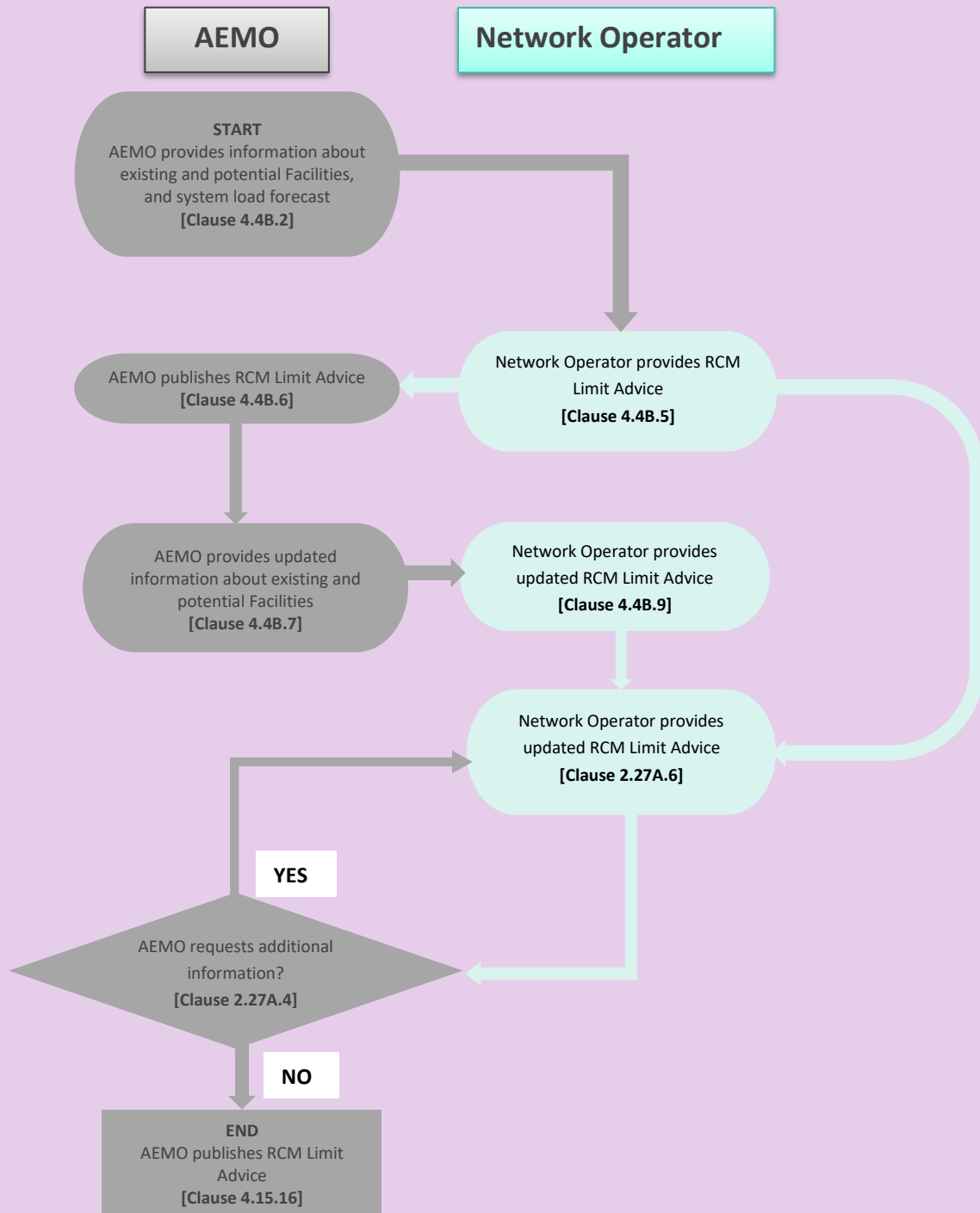
1.1. Purpose and scope

- 1.1.1. This WEM Procedure: RCM Limit Advice Requirements (Procedure) is made in accordance with AEMO's functions under clause 2.1A.2(h) of the Electricity System and Market Rules (ESM Rules).
- 1.1.2. The *Electricity Industry Act 2004* (WA), the ESM Regulations and the ESM Rules prevail over this Procedure to the extent of any inconsistency.
- 1.1.3. In this Procedure, where obligations are conferred on a Rule Participant, that Rule Participant must comply with the relevant obligations in accordance with clause 2.9.7A, 2.9.7D or 2.9.8 of the ESM Rules, as applicable.
- 1.1.4. The purpose of this Procedure is to outline:
 - (a) in respect of the information to be provided by a Network Operator to AEMO under clause 2.27A.2 (to the extent that the information relates to RCM Limit Advice):
 - (i) the information and data to be provided by each Network Operator to AEMO [**Clause 2.27A.10(a)(i)**];
 - (ii) the processes to be followed for the provision of and, where applicable, updates to such information and any other information referred to in clause 2.27A.4, from each Network Operator to AEMO, including:
 - 1. the format, form and manner in which such information must be provided [**Clause 2.27A.10(a)(ii)(1)**]; and
 - 2. where the ESM Rules do not provide a timeframe for the provision of such information to AEMO, the reasonable times by which such information must be provided having regard to the scope and nature of the information to be provided [**Clause 2.27A.10(a)(ii)(2)**];
 - (b) the processes AEMO must follow in providing the information to Network Operators under clause 4.4B.2 [**Clause 2.27A.10(bA)**]; and
 - (c) any other processes or procedures relating to Constraints or Network congestion that AEMO considers are reasonably required to enable it to carry out its functions under the ESM Rules [**Clause 2.27A.10(d)**].

- 1.1.5. Appendix A of this Procedure outlines the head of power clauses that this Procedure is made under, as well as other clauses of the ESM Rules requiring an obligation, process or requirement to be documented in this Procedure.

E[A] RCM Limit Advice process overview

A summary of significant steps in the RCM Limit Advice process is provided below for reference.



1.2. Definitions

- 1.2.1. Terms defined in the *Electricity Industry Act 2004* (WA), the ESM Regulations and the ESM Rules have the same meanings in this Procedure unless the context requires otherwise.
- 1.2.2. The following definitions apply in this Procedure unless the context requires otherwise.

Table 1 Definitions

Term	Definition
Block Load	A net Withdrawal that a Network Operator proposes, and AEMO accepts, that is not expected to vary for different SWIS load levels, for the purpose of paragraph 3.2.
CSV	Comma Separated Values is a plain text file that stores tabular data, where each line represents a record and values within each record are separated by commas.
DlgSILENT PowerFactory	A power system analysis software application for use in analysing generation, transmission, distribution and industrial systems. AEMO uses this application to facilitate Load-flow Studies for a given Network configuration.
Load-flow Study	A numerical analysis of the flow of electric power in an interconnected system.
Microsoft Office Applications	Refers to typical software applications by Microsoft Office, including excel and word.
Protection Scheme	An automation of the Network by the Network Operator, typically characterised by triggers and actions, that is related to maintaining Power System Security and Power System Reliability. For example, a Protection Scheme may include Network Reinforcement Schemes, special protection schemes, remedial action schemes, runback schemes, and intertrip schemes.

1.3. Interpretation

- 1.3.1. The following principles of interpretation apply in this Procedure unless the context requires otherwise.
- Clauses 1.3 to 1.5 of the ESM Rules apply in this Procedure.
 - References to time are references to Western Standard Time.
 - Terms that are capitalised, but not defined in this Procedure, have the meaning given in the ESM Rules.
 - A reference to the ESM Rules or WEM Procedures includes any associated forms required or contemplated by the ESM Rules or WEM Procedures.
 - Words expressed in the singular include the plural and vice versa.
 - A reference to a paragraph refers to a paragraph of this Procedure.
 - A reference to an appendix refers to an appendix of this Procedure.
 - A reference to a clause refers to a clause or section of the ESM Rules.
 - References to ESM Rules in this Procedure in bold and square brackets **[Clause XXX]** are included for convenience only, and do not form part of this Procedure.
 - Text located in boxes and headed as E[X] in this Procedure is included by way of explanation only and does not form part of this Procedure. The Procedure prevails to the extent of any inconsistency with the explanatory notes contained within it.

- (k) The body of this Procedure prevails to the extent of any inconsistency with the figures, diagrams, appendices, schedules, annexures or attachments contained within this document.

- 1.3.2. This Procedure must be read in conjunction with the ESM Rules relevant to this WEM Procedure, noting that, in many cases, the ESM Rules provide descriptive processes, timeframes and other obligations that are not duplicated in AEMO's WEM Procedures.

1.4. Related documents

- 1.4.1. The documents in Table 2 are associated with this Procedure.

Table 2 Related documents

Reference	Title	Location
ESM Rules	Electricity System and Market Rules	Energy Policy WA website
Technical Rules	Technical Rules	Western Power's website
WEM Procedure	WEM Procedure: RCM Constraint Formulation	WEM Website
WEM Procedure	WEM Procedure: Development of Limit Advice (maintained by Western Power)	Western Power's website
WEM Procedure	WEM Procedure: Congestion Information Resource	WEM Website
Code	Electricity Industry Metering Code 2012	Energy Policy WA's website

1.5. Communications and provision of information

- 1.5.1. Unless otherwise agreed between AEMO and the relevant Network Operator in writing, all communications and provision of information by each Network Operator to AEMO under this Procedure must be conducted via email to wem.limitadvice@aemo.com.au and cc.wa.capacity@aemo.com.au, and must specify 'RCM' in the subject line of the email.
- 1.5.2. All communication and provision of information by AEMO to a Network Operator under this Procedure will be conducted via email, unless otherwise specified in this Procedure.

2. Format, form and manner

2.1. Provision of information to a Network Operator by AEMO

- 2.1.1. In providing information specified in clauses 4.4B.2(a), 4.4B.2(c), 4.4B.7(a), and 4.4B.7(c) to a Network Operator, AEMO will include the information specified in clause 4.4.1, and may provide additional information, as agreed between AEMO and the Network Operator, which may include, but is not limited to:
- (a) the reference number of the application submitted to a Network Operator for the purpose of an Access Proposal or an Arrangement for Access; and
 - (b) the date of the application specified in paragraph 2.1.1(a).
- 2.1.2. In providing information specified in clauses 4.4B.2(b) and 4.4B.7(b) to a Network Operator, AEMO must include the following information:
- (a) Facility name;
 - (b) Expected date of cessation of operation; and
 - (c) any other information AEMO considers relevant.
- 2.1.3. AEMO will provide all information specified in clauses 4.4B.2(e) and 4.4B.7(e), and paragraphs 2.1.1 and 2.1.2, to the Network Operator in a spreadsheet, or any other format as agreed with the Network Operator, in accordance with paragraph 1.5, and by the date and times specified under the ESM Rules.

2.2. Provision of information to AEMO by a Network Operator

- 2.2.1. All submissions of information to AEMO by a Network Operator in accordance with clauses 4.4B.5, 4.4B.9, and paragraph 3, including where the Network Operator provides updated information in accordance with clause 2.27A.6(a) and where further information is provided under clause 2.27A.4, must:
- (a) be made in accordance with the format outlined in Table 3; and
 - (b) include only content that:
 - (i) meets the definition of Public Information under the ESM Rules; and
 - (ii) does not disclose any confidential information as defined under the Electricity Industry Metering Code 2012.

- 2.2.2. For the purposes of ensuring AEMO is able to carry out its obligations under clause 2.27A.7 of the ESM Rules, all submissions of information to AEMO by a Network Operator in accordance with clauses 4.4B.5 and 4.4B.9, and paragraph 3, including where the Network Operator provides updated information in accordance with clause 2.27A.6(a) and where further information is provided under clause 2.27A.4, must include each relevant Facility regardless of whether the Network Operator considers its status is committed or uncommitted.

E[B] Rationale for Table 3 requirements

Clause 4.4B.6 requires AEMO to publish the information provided under clause 4.4B.5 in the Constraints Library for the Reserve Capacity Cycle. Clause 4.15.16(a) requires AEMO to publish Network Access Quantity Model Inputs, which includes information provided under clauses 4.4B.9 and 2.27A.6.

In addition to enabling AEMO to carry out its obligations under clause 2.27A.7, the requirements in Table 3 were developed on the basis that information should:

- be provided in a format that is easy to understand for Rule Participants;
- be accessible via CSV and typical Microsoft Office Applications (for example, MS Excel or MS Word format) so that they can be accessed by Rule Participants;
- be suitable for publishing by AEMO without significant additional processing of information;
- allow for changes to be easily tracked from year to year;
- allow for AEMO to undertake Load-flow Studies and calculations; and
- maintain confidentiality, where required.

Table 3 Required format and form for the provision of information under clauses 4.4B.5 and 4.4B.9

ESM Rule clauses	Format and form
4.4B.5 and 4.4B.9	In a format and form that will enable the information to be treated in such a way that prevents the disclosure of any confidential information when the information is published, in accordance with paragraph 2.2.1(b).
4.4B.5(a) and 4.4B.9(a)	In the form of a list and in the format of CSV file or spreadsheet, or another format agreed with AEMO.
Thermal Network Limits in 4.4B.5(b), 4.4B.5(d), 4.4B.9(b), and 4.4B.9(d)	In the form of a list and in the format of CSV file or spreadsheet, or another format, as agreed with AEMO.
4.4B.5(c) and 4.4B.9(c)	In the form of a list and in the format of CSV file, spreadsheet, word document (e.g. Microsoft Word), another format agreed with AEMO.
4.4B.5(e) and 4.4B.9(e)	In the form of a list and in the format of CSV file, spreadsheet, word document (e.g. Microsoft Word), another format agreed with AEMO.
Network augmentations and configuration in 4.4B.5(b), 4.4B.5(d), 4.4B.9(b), and 4.4B.9(d)	DlgSILENT PowerFactory file.

ESM Rule clauses	Format and form
4.4B.9(f)	In the form of a list and in the format of CSV file or spreadsheet, or another format agreed with AEMO.

3. Information requirements

3.1. Application of this paragraph

- 3.1.1. In addition to the clauses of the ESM Rules specified, all requirements under this paragraph 3 also apply where the relevant information is updated in accordance with clause 2.27A.6(a), and where further information is requested under clause 2.27A.4.

3.2. Estimated proportion of peak demand

E[C] Information specified in clauses 4.4B.5(a) and 4.4B.9(a)

Paragraph 3.2 applies to the information specified in the clauses 4.4B.5(a) and 4.4B.9(a), which is the estimated proportion of the peak demand of a Network Operator's Network, as at 1 October of Year 3 of a relevant Reserve Capacity Cycle.

- 3.2.1. For information submitted under clauses 4.4B.5(a) and 4.4B.9(a), a Network Operator must propose a list of:
- (a) existing Electrical Locations and Block Load connections; and
 - (b) the Electrical Locations and Block Load connections it reasonably estimates to be in-service at peak demand as at 1 October in Year 3 of the Reserve Capacity Cycle,
- for which it must provide the information under paragraph 3.2.3.
- 3.2.2. AEMO may accept the proposed list in paragraph 3.2.1, or in consultation with the Network Operator, may request clarification or modification of the list in accordance with clause 2.27A.4.
- 3.2.3. For information provided under clauses 4.4B.5(a) and 4.4B.9(a), a Network Operator must include:
- (a) for each relevant Electrical Location, as accepted by AEMO under paragraph 3.2.2, its estimated proportion of the peak demand of its Network, as a percentage, excluding the net Withdrawal provided under paragraph 3.2.3(b); and
 - (b) for each net Withdrawal that has been identified as a Block Load connection by a Network Operator, and accepted by AEMO under paragraph 3.2.2:
 - (i) the identity of the Block Load connection; and
 - (ii) the estimated net Withdrawal at the time of peak demand, in megawatts (MW).

3.3. Thermal Network Limits

E[D] Thermal Network Limits specified in clauses 4.4B.5(b), 4.4B.5(d), 4.4B.9(b), and 4.4B.9(d)

Paragraph 3.3 refers to the Thermal Network Limit information that is required to be provided under clauses 4.4B.5(b), 4.4B.5(d), 4.4B.9(b) and 4.4B.9(d). The Network configuration requirements under these clauses are provided in paragraph 3.5.

- 3.3.1. A Network Operator must provide Thermal Network Limits under clauses 4.4B.5(b), 4.4B.5(d), 4.4B.9(b), and 4.4B.9(d), that consider all relevant limiting factors and components, in accordance with clause 4.4B.3(a), for the following equipment:
- (a) transmission lines;
 - (b) terminal substation circuits, including transformers;
 - (c) any other equipment for which AEMO has requested information under paragraph 4; and
 - (d) any other equipment the Network Operator considers relevant.

E[E] Example under paragraph 3.3.1 of relevant limiting factors and components

The thermal rating of a transmission line may be limited by the thermal rating of its current transformer, by the maximum allowable sag to maintain minimum clearances, or any other limitation that the Network Operator deems relevant.

- 3.3.2. For Thermal Network Limits submitted under paragraph 3.3.1, a Network Operator must also include:
- (a) the site ID;
 - (b) the equipment ID;
 - (c) the equipment description;
 - (d) the type of equipment;
 - (e) the unit of measurement;
 - (f) the nominal voltage in kilovolts (kV);
 - (g) continuous ratings taking into consideration the condition under clause 4.4B.3(a)(i), for each relevant connectable end of each item of equipment listed in paragraph 3.3.1;
 - (h) a description of the most limiting factor or limiting component of the equipment that determined the continuous rating in paragraph 3.3.2(g);
 - (i) any other information the Network Operator considers relevant; and
 - (j) for the 2026 Reserve Capacity Cycle and all future Reserve Capacity Cycles, the date on which the items under paragraph 3.2.3(a) to 3.3.2(i) were last updated, such that if the item is unchanged compared to previous RCM Limit Advice, the date is the same as the previous RCM Limit Advice.

E[F] Example under paragraph 3.3.2(g) of connectable end

For a transformer, the rating of the HV terminal of the transformer may be different from the rating at its MV or LV terminal.

3.4. Changes to large loads

- 3.4.1. The requirements of this paragraph apply to any new load that is equal or greater than 10MW, or an existing load that increases to a total capacity of 10 MW or more, compared to RCM Limit Advice provided for the immediately preceding Reserve Capacity Cycle.
- 3.4.2. For information submitted under clauses 4.4B.5(c) and 4.4B.9(c), a Network Operator must also include:
- (a) whether it is a new load or an increase of an existing load;
 - (b) the identity of the new Block Load connection or existing load connection supplied under paragraph 3.2.3(b)(i);
 - (c) for a new load connection, the new net Withdrawal in MW;
 - (d) for an increase of an existing load connection, its net Withdrawal in MW provided for the previous Reserve Capacity Cycle and its updated net Withdrawal in MW; and
 - (e) a description of any other impact or expected impact of the new load, or change to an existing load, on RCM Limit Advice.

3.5. Network configuration

E[G] Network configuration information specified in clauses 4.4B.5(b), 4.4B.5(d), 4.4B.9(b), and 4.4B.9(d)

Paragraph 3.5 refers to the Network configuration and augmentation information specified in clauses 4.4B.5(b), 4.4B.5(d), 4.4B.9(b), and 4.4B.9(d). The Thermal Network Limits requirements under these clauses are provided in paragraph 3.3.

Where relevant, paragraph 3.5 also places requirements regarding information provided under clause 4.4B.3(a)(iii) and references clause 4.4B.3(a)(ii) in the provision of information.

- 3.5.1. For Network configuration and augmentation information submitted under clauses 4.4B.5(d) and 4.4B.9(d), a Network Operator must include:
- (a) identification of equipment that forms part of the Network and is not normally required to be in-service;
 - (b) operational switching practices such as normally open points, and any other relevant open points, such as those used to manage network fault levels or specific network conditions;
 - (c) all relevant Protection Schemes (such as network reinforcement schemes, special protection schemes and remedial action schemes), including details of all the triggers and actions for each scheme;
 - (d) each Facility that is required to be in-service, to provide a Non-Co-optimised Essential System Service, network control service or similar service; and

- (e) any other items the Network Operator considers relevant,
that the Network Operator reasonably estimates to be applicable at peak demand as at 1 October of Year 3 of the Reserve Capacity Cycle.
- 3.5.2. For Network configuration and augmentation information (as applicable) submitted under clauses 4.4B.5(b), 4.4B.5(d), 4.4B.9(b), 4.4B.9(d), and (where relevant) 4.4B.3(a)(iii), a Network Operator must include:
 - (a) the Declared Sent Out Capacity in MW of the Facility, if different from paragraph 2.1.1;
 - (b) a description of how the Facility is to be connected to the Network, including any reconfiguration of the Network;
 - (c) if different from paragraph 2.1.1, the proposed or best estimate of the year in which the Facility will be commissioned and, where possible, the month of that year; and
 - (d) where available to a Network Operator, references to computer models that reasonably reflect the Facility and its connection to the Network.
- 3.5.3. When providing Network configuration information, the Network Operator must include all other Network configuration information required to perform Load-flow Studies, in the format of a DigSILENT PowerFactory (.PFD) file.
- 3.5.4. In the file specified in paragraph 3.5.3, the Network Operator must include all relevant Network elements, including:
 - (a) all other RCM Limit Advice provided under this Procedure, including but not limited to:
 - (i) load details in accordance with paragraphs 3.2 and 3.4; and
 - (ii) equipment details in accordance with paragraph 3.3;
 - (b) all equipment on the Equipment List;
 - (c) all equipment associated with Network augmentations referenced in clause 4.4B.3(a)(ii)(1); and
 - (d) all equipment associated with new Facilities, where this information is available to the Network Operator.
- 3.5.5. In the file specified in paragraph 3.5.3, and for all Network elements specified in paragraph 3.5.4, the Network Operator must include relevant configuration information, including but not limited to:
 - (a) equipment name (load names matching the information provided in accordance with paragraph 3.2.1, 3.2.2, and 3.4.2, and Network equipment names matching information provided for paragraph 3.3.1);
 - (b) equipment connection arrangements (such as source and destination bus name);
 - (c) equipment specifications and modelling parameters (such as nominal voltages, impedances, etc.); and
 - (d) equipment configuration and settings, where applicable.

3.6. Substation names and Transmission Node Identifiers

E[H] Information specified in clause 4.4B.9(f)

Paragraph 3.6 refers to information required under clause 4.4B.9(f) which includes a list of substation names as used in the RCM Limit Advice, and all associated Transmission Node Identifiers, that are expected to be in service on 1 October of Year 3 of the Reserve Capacity Cycle. The information allows AEMO to publish information with respect to Transmission Node Identifiers, where required under the ESM Rules.

- 3.6.1. For information required to be provided under clause 4.4B.9(f), the Network Operator must include the Transmission Node Identifier for each Electrical Location, substation name, and location reference included in RCM Limit Advice.

3.7. Changes to the RCM Limit Advice

E[I] Information specified in clauses 4.4B.5(e) and 4.4B.9(e)

Paragraph 3.7 refers to explanations in relation to changes to the RCM Limit Advice provided to AEMO for the Reserve Capacity Cycle from the RCM Limit Advice provided to AEMO for a previous Reserve Capacity Cycle, as specified in clauses 4.4B.5(e) and 4.4B.9(e).

- 3.7.1. For information submitted under clauses 4.4B.5(e) and 4.4B.9(e) relevant to Thermal Network Limits, a Network Operator must include:
- (a) identification of any:
 - (i) new Thermal Network Limits, including those in accordance with clause 4.4B.3(a)(ii)(1);
 - (ii) Thermal Network Limits for retired transmission Network assets, in accordance with clause 4.4B.3(a)(ii)(2); and
 - (iii) changes to previously provided Thermal Network Limits not captured by paragraphs 3.7.1(a)(i) and 3.7.1(a)(ii);
 - (b) the relevant equipment relating to the changed RCM Limit Advice;
 - (c) RCM Limit Advice provided for a previous Reserve Capacity Cycle, as well as the RCM Limit Advice for the current Reserve Capacity Cycle; and
 - (d) an explanation for the changes to the RCM Limit Advice, including changes associated with new Network augmentations or Network configuration as provided under clauses 4.4B.5(b), 4.4B.5(d), 4.4B.9(b), and 4.4B.9(d), where applicable.

E[J] Examples: Explaining changes to the RCM Limit Advice

In explaining different types of changes to RCM Limit Advice and Network configuration, an example of the format that a Network Operator may follow is provided in Table 4.

Table 4 Examples of explanations required under paragraph 3.7.1(d)

Equipment ID	Comments
A-B 81	A-B 81 New underground cable installed under project 'New Load connection B'.
J-K 81	J-K 81 To be decommissioned due to decommissioning of zone substation 'J'.
X-Y 81	X-Y 81 To be decommissioned under project 'Mitigating line XY asset condition risks'.
P-Q/R 81	P-Q/R 81 Refer to new lines P-Q 81 and Q-R 81.
P-Q 81	P-Q 81 Network reconfiguration under project 'Big Wind Farm'.
Q-R 81	Q-R 81 Network reconfiguration under project 'Big Wind Farm'.

4. Requesting additional information

E[K] Clause 2.27A.4

In respect of the RCM Limit Advice, AEMO may request further information, clarification or additional RCM Limit Advice from a Network Operator in accordance with clause 2.27A.4. The following paragraphs detail the process AEMO and the Network Operator must follow when additional detail or information is required.

- 4.1.1. Where AEMO requests additional information or data from a Network Operator under clause 2.27A.4, AEMO will nominate a time and date by which the information must be provided.
- 4.1.2. A Network Operator must provide the information requested under paragraph 4.1.1 by the time and date nominated by AEMO, unless amended under paragraph 4.1.4.
- 4.1.3. Before the time and date nominated by AEMO under paragraph 4.1.1, a Network Operator may request an extension to the time and date nominated by AEMO under paragraph 4.1.1 by submitting a request in writing to AEMO, specifying an alternative time and date for provision of the information.
- 4.1.4. AEMO must consider a request made by the Network Operator under paragraph 4.1.3 and, if appropriate, amend the timeframe nominated under paragraph 4.1.1 by confirming the time and date for provision of the information in a written notice to the Network Operator.

Appendix A. Relevant clauses of the ESM Rules

Table 5 details:

- (a) the head of power clauses in the ESM Rules under which the Procedure has been developed; and
- (b) each clause in the ESM Rules requiring an obligation, process or requirement be documented in a WEM Procedure, where the obligation, process or requirement has been documented in this Procedure.

Table 5 Relevant clauses of the ESM Rules

Clause
2.27A.10(a)(i)
2.27A.10(a)(ii)
2.27A.10(a)(ii)(1)
2.27A.10(a)(ii)(2)
2.27A.10(bA)
2.27A.10(d)