

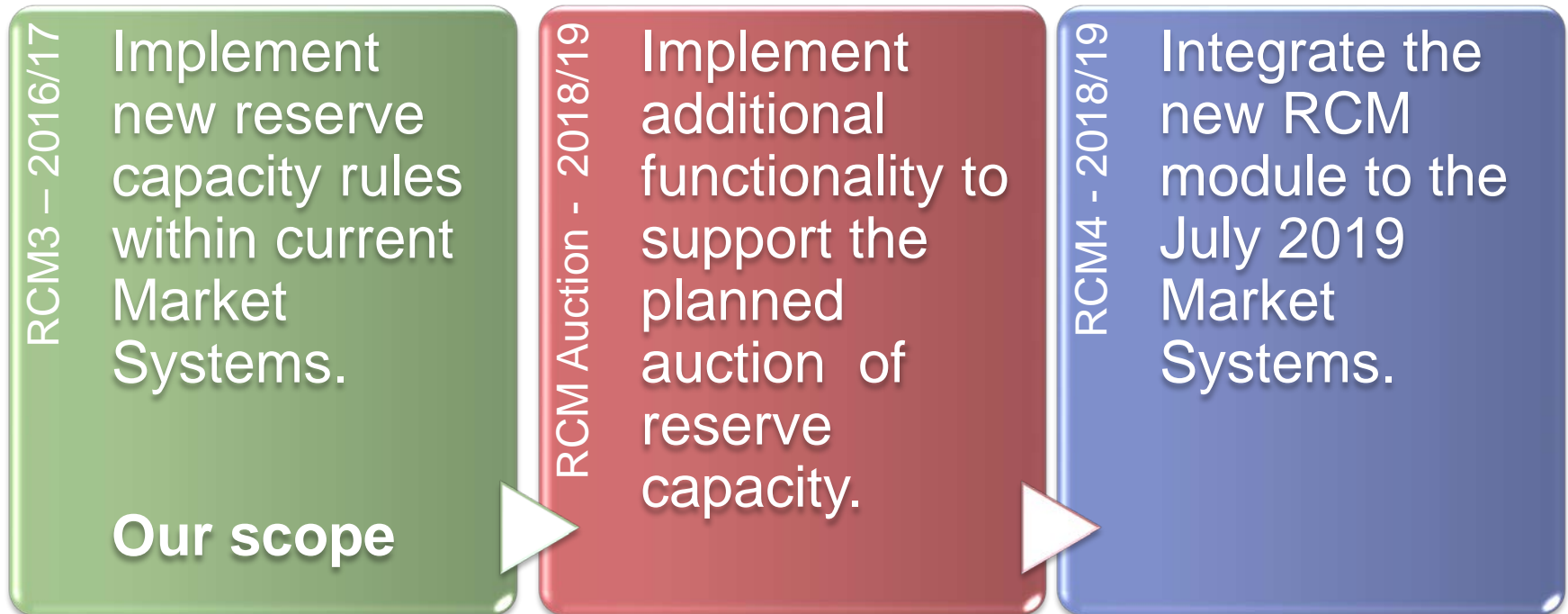
# RCM3 UPDATE

February 2017

PRESENTED BY ANDREW THORNBURY



- Current state
- Current activities
- Timeline
- Key dates for Participants
- Application Programming Interface API



# PROJECT STATUS



## *Completed*

- *IRCR Calculations*
- *Application for Certification – scheduled generators*
- *Trade Declaration*
- *Document Management*
- *Capacity Credit Allocation*
- *Resized scope of RCM*
- *Capacity Credit Management*
- *MPI integration*

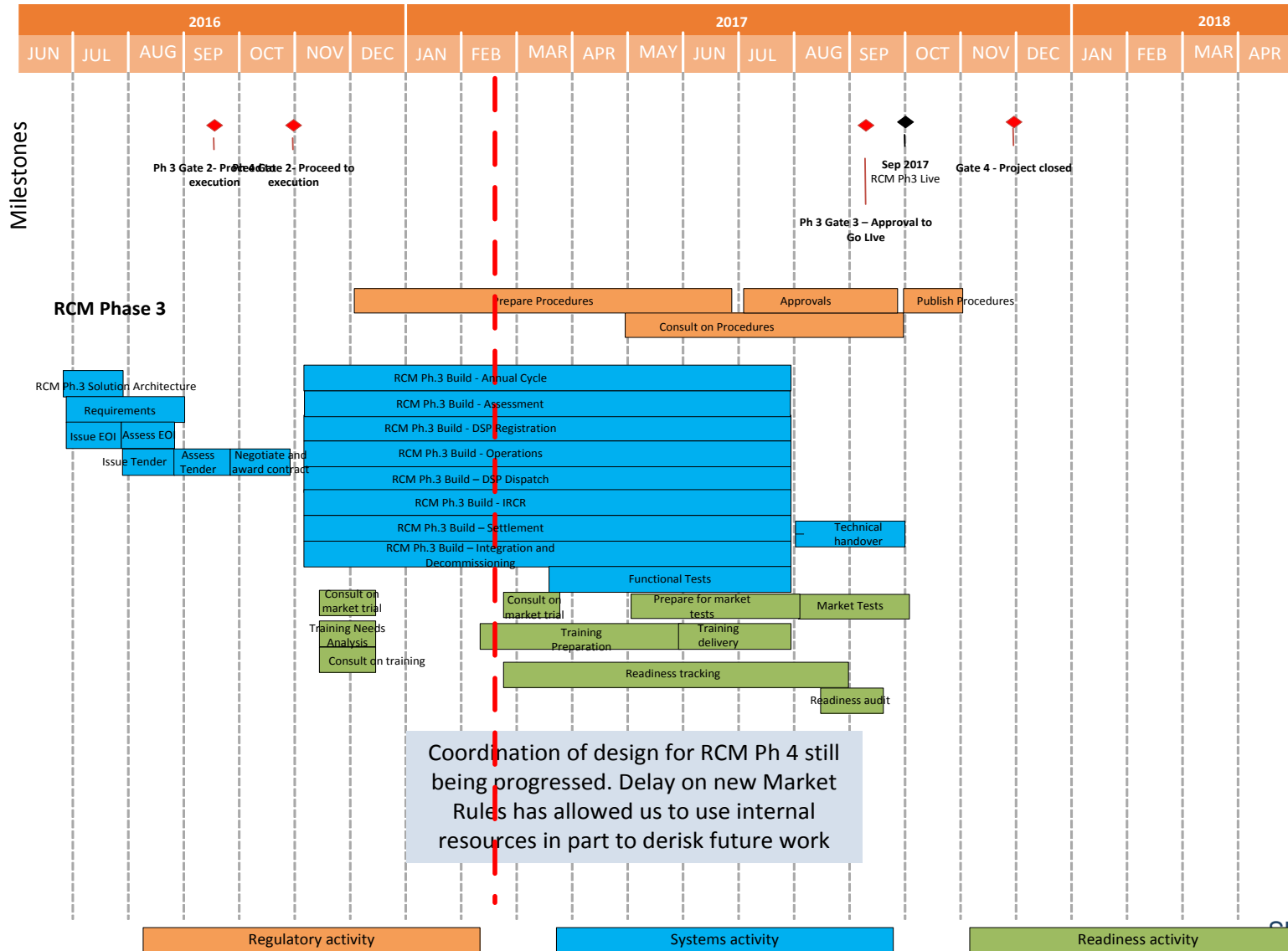
## *In Test*

- *Base Settlement Calculation*
- *Application for Certification – DSP & non-scheduled generators*
- *Authentication*
- *RC price*

## *In Development*

- *IRCR Certification*
- *IRCR Case loader*
- *Settlement Calculations*
- *Window Authorisation*
- *API Authorisation*
- *NTDL Application*
- *RCOQ Calculation*

# HIGH LEVEL TIMELINE



# APPLICATION PROGRAMMING INTERFACE (API)



Item	Market Participant Feedback on Priority	Proposed treatment for discussion
<b>Submissions and reporting for:</b>		
<b>Monthly Capacity Allocation Processes</b>	Must 2,Should 1,Could 3,Won't 1	Medium Priority
<b>Reporting relating to:</b>		
<b>Annual RCM certification cycle submissions (e.g. Certification of Reserve Capacity, Bilateral and DSM Trade Declarations submissions and results)</b>	Must 0, Should 2,Could 3, Won't 2	Low Priority
<b>Parameters applicable for a Reserve Capacity Cycle (e.g. RCT, RCP, DSP Capacity Price, Assigned Capacity Credits)</b>	Must 2, Should 2, Could 1, Won't 2	High Priority
<b>Relevant Demand</b>	Must 0, Should 1, Could 2, Won't 4	Deprioritise
<b>RCOQ</b>	Must 3, Should 1, Could 0, Won't 3	High Priority
<b>RC Testing Results</b>	Must 2, Should 1, Could 2,Won't 2	Medium Priority
<b>NBDMO</b>	Must 1, Should 1, Could 0,Won't 4	Low Priority
<b>IRCR</b>	Must 3, Should 1, Could 0, Won't 3	High Priority
<b>Settlement Outcomes</b>	Must 4, Should 0, Could 1, Won't 2	High Priority
<b>Publication of data as required by Clause 10.5.1</b>		
<b>NBDMO prices by facility, NBDMOs, Refund Exempt Planned Outage Count and Telemetry</b>	Must 1, Should 1, Could 0, Won't 4	Low Priority
<b>Other Items (please specify)</b>		
<b>Submission for certification – bilateral and dsm trade declarations</b>	Must 0, Should 0, Could 1, Won't 1	Deprioritise
<b>Submission for certification – Full Certification Data and Documentation.</b>	Must 0, Should 0, Could 0, Won't 2	Deprioritise
<b>Forecast capacity and multiplier calculation (To support the Dynamic Refund Mechanism)</b>	Must 0, Should 1,Could 0, Won't 1	Deprioritise
<b>Loss Factors</b>	Must 1, Should 0, Could 0, Won't 1	Deprioritise – Not RCM Specific
<b>Access to LFAS submission Data</b>	Must 0, Should 1, Could 0, Won't 1	Deprioritise – Not RCM Specific

# KEY DATES FOR PARTICIPANTS



Activity	Planned Date	Status
Consult on Market Trial and Training Approach	Jan/Feb 17	Running late due to focus on program changes – now March 17
API Design	Late Q1 17	No change
Training Delivery	Late Q2/ Early Q3 17	No change
Market Trial	Q3 17	No change

Ongoing capacity assignment and assessment in mid 2017 – will not use the new systems and will execute in parallel to the trial.

THANK YOU

