

Lighting Systems

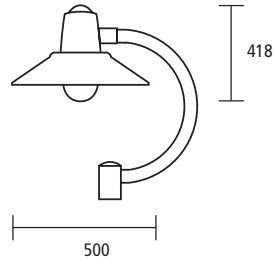
ALDRIDGE



boston series

boston-se

ALDRIDGE



- Designed to meet stringent Australian Standards
- Self cleaning housing and PMMA optical diffuser
- High Performance LED & Optics to meet AS/NZ1158
- Integrated thermal management
- Hinged “quick access latch”
- Complies with AS/NZ 1158.6 & AS/NZ 1158.1
- 10 Year Warranty

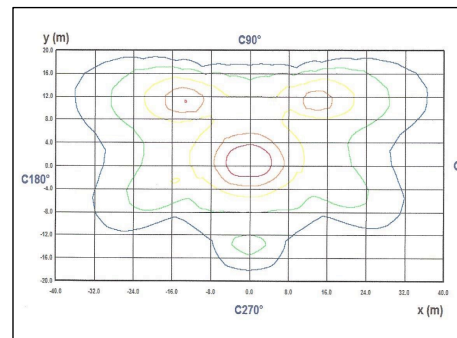
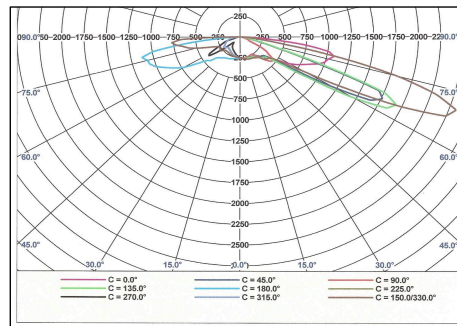
Technical Data

- Body: Marine grade aluminum
- Optics: P4 & P5 Distribution
- LED #: 24
- Wattage: 14-20-26 watts
- Finishing: Powder Coat (Black Standard)
- Mounting: 4-9m
- Fixing: Side spigot mount (76mm OD).
- IP rating: IP65 – IP44
- IK rating: IK10
- Voltage: 240V 50/60Hz
- Power Factor: > 0.9

Options

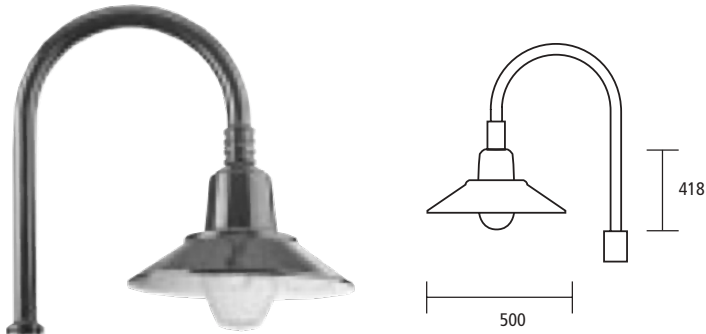
- Photocell: 7-pin Nema receptacle (7PN), D2 type cell (D2)
- Fuse Terminal Block: (FTB)
- Surge Protection Device: (SPD - 10KVa, 20KVa)
- Class II (DB - Double Insulated)
- Color: Green (GR), White (WH), Black (BL- Standard)
- CCT: 3000K, 4000K (Standard), 5000K
- Visor: Glareshield/spill light kit (GV)

Photometry Data



Product Code	BOS2.SE.514	BOS2.SE.520	BOS2.SE.526
LED Qty	24	24	24
Wattage (watts)	14	20	26
System Wattage (watts)	17.9	23.4	29.2
Input Voltage	240	240	240
CCT (K)	4000	4000	4000
CRI	Ra>80	Ra>80	Ra>80
IP Protection	IP65	IP65	IP65
IK Protection	IK10	IK10	IK10
Weight (Kg) - max.	15	15	15

boston-te



- Designed to meet stringent Australian Standards
- Self cleaning housing and PMMA optical diffuser
- High Performance LED & Optics to meet AS/NZ1158
- Integrated thermal management
- Hinged “quick access latch”
- Complies with AS/NZ 1158.6 & AS/NZ 1158.1
- 10 Year Warranty

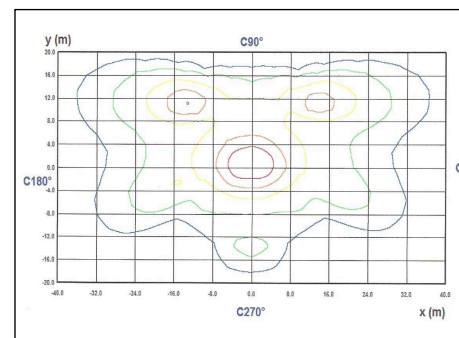
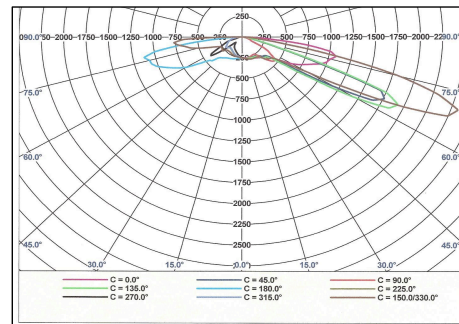
Technical Data

- Body: Marine grade aluminum
- Optics: P4 & P5 Distribution
- LED #: 24
- Wattage: 14-20-26 watts
- Finishing: Powder Coat (Black Standard)
- Mounting: 4-9m
- Fixing: Top spigot mount (76mm OD).
- IP rating: IP65 – IP44
- IK rating: IK10
- Voltage: 240V 50/60Hz
- Power Factor: > 0.9

Options

- Photocell: 7-pin Nema receptacle (7PN), D2 type cell (D2)
- Fuse Terminal Block: (FTB)
- Surge Protection Device: (SPD - 10KVa, 20KVa)
- Class II (DB - Double Insulated)
- Color: Green (GR), White (WH), Black (BL- Standard)
- CCT: 3000K, 4000K (Standard), 5000K
- Visor: Glaeshield/spill light kit (GV)

Photometry Data



Product Code	BOS2.TE.514	BOS2.TE.520	BOS2.TE.526
LED Qty	24	24	24
Wattage (watts)	14	20	26
System Wattage (watts)	17.9	23.4	29.2
Input Voltage	240	240	240
CCT (K)	4000	4000	4000
CRI	Ra>80	Ra>80	Ra>80
IP Protection	IP65	IP65	IP65
IK Protection	IK10	IK10	IK10
Weight (Kg) - max.	15	15	15

Lighting Systems

ALDRIDGE

Aldridge Traffic Systems Pty Ltd

12 - 14 Leeds Street
Rhodes NSW 2138

Phone + 61 2 9736 3677
Facsimile + 61 2 9736 3391
Email info@aldridgetraffic.com.au
Web aldridgetraffic.com.au

VIC

P +61 3 9430 0222
F +61 3 9430 0244

ACT

P +61 2 6299 7922
F +61 2 6299 7977

QLD

P +61 7 3266 1900
F +61 7 3266 2244

SA

P +61 8 8362 2385

WA

P +61 8 9248 1002
F +61 8 9209 2288

TAS

P +61 3 6273 1177
F +61 3 6273 1759

NT

P +61 8 8947 0733
F +61 8 8947 0713

United Kingdom

P +44 (0) 1159 223 797
F +44 (0) 7711 511 183