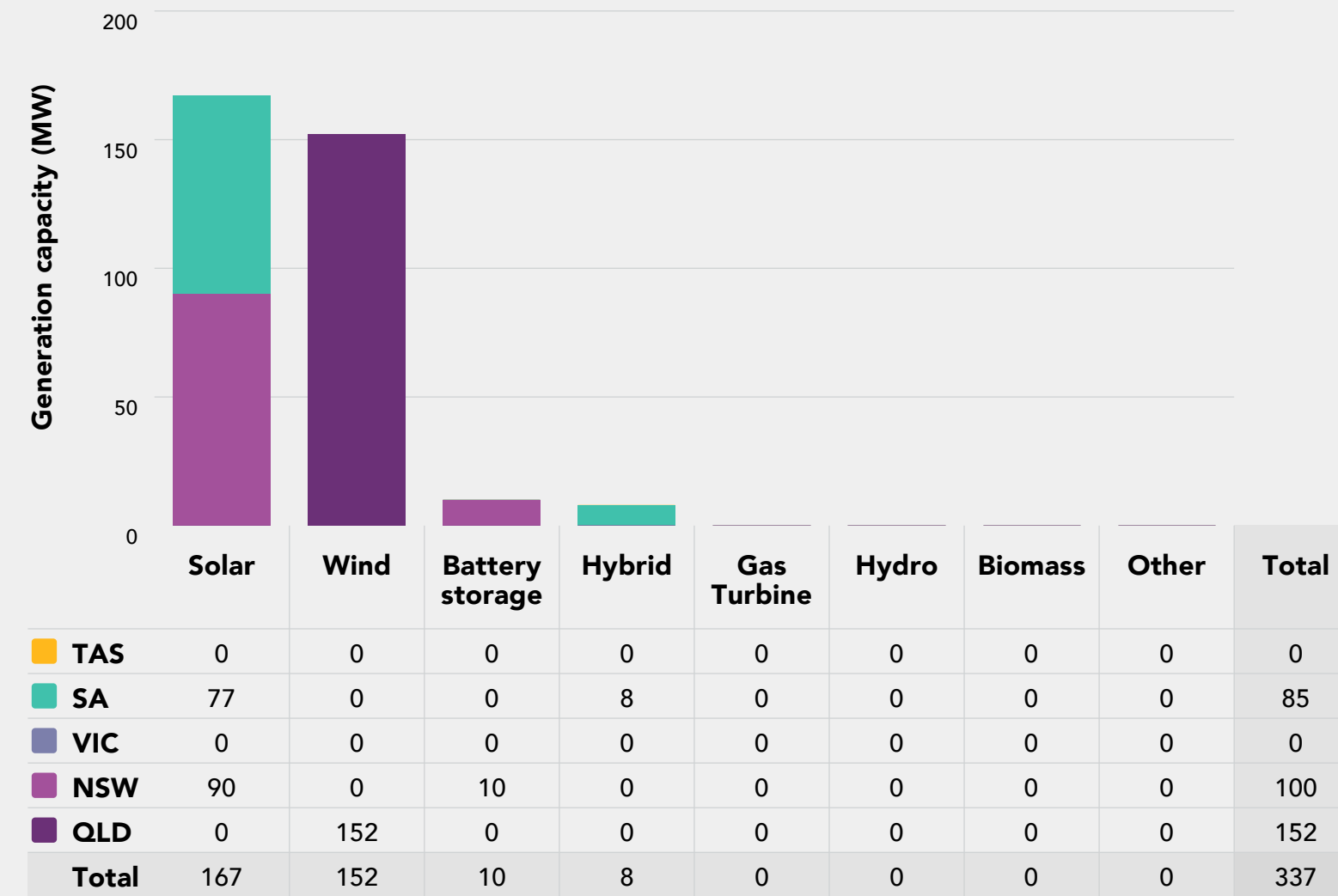




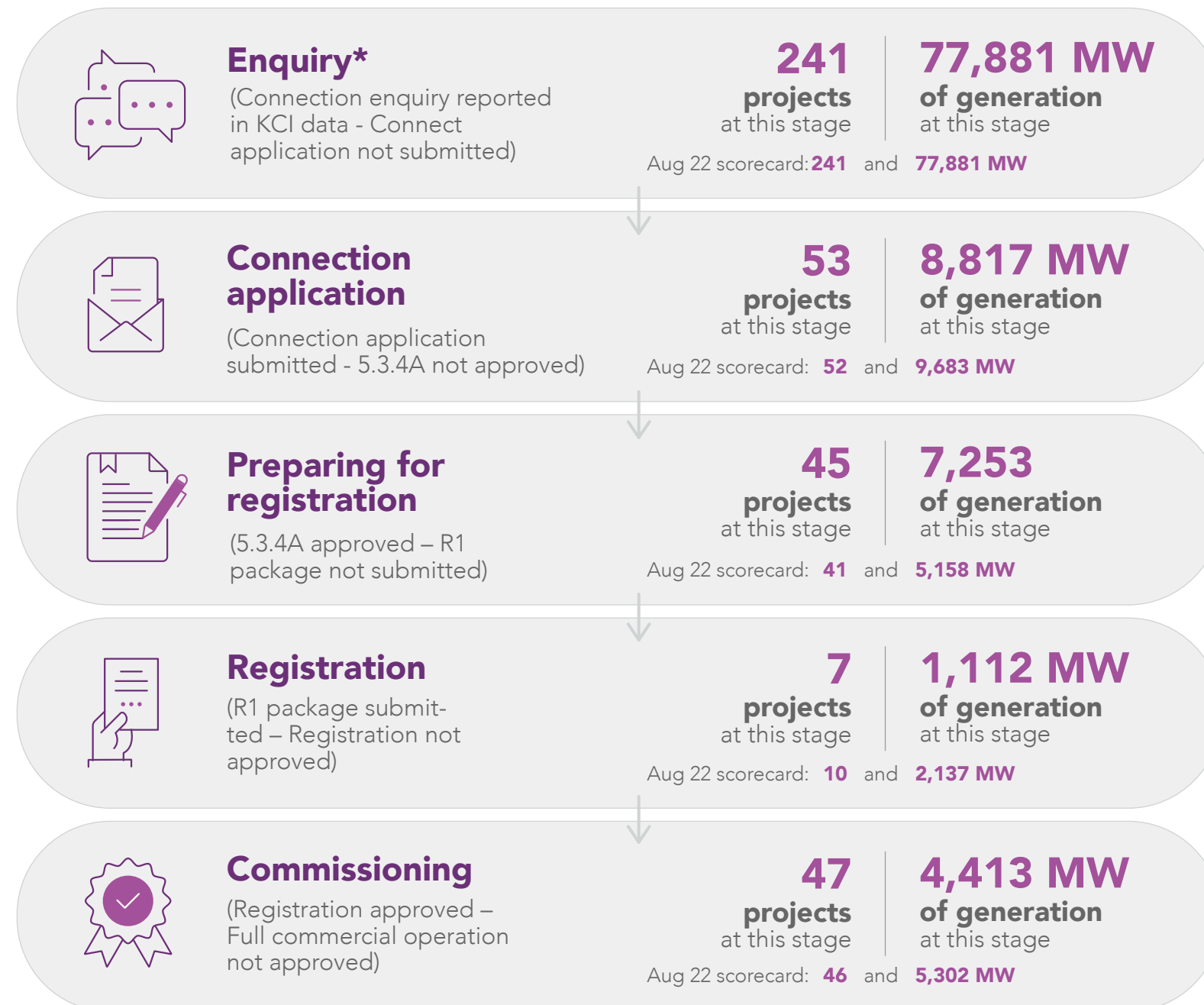
October 2022^  
2023 Financial Year to Date

# Connections scorecard

## NEM generation registered FYTD



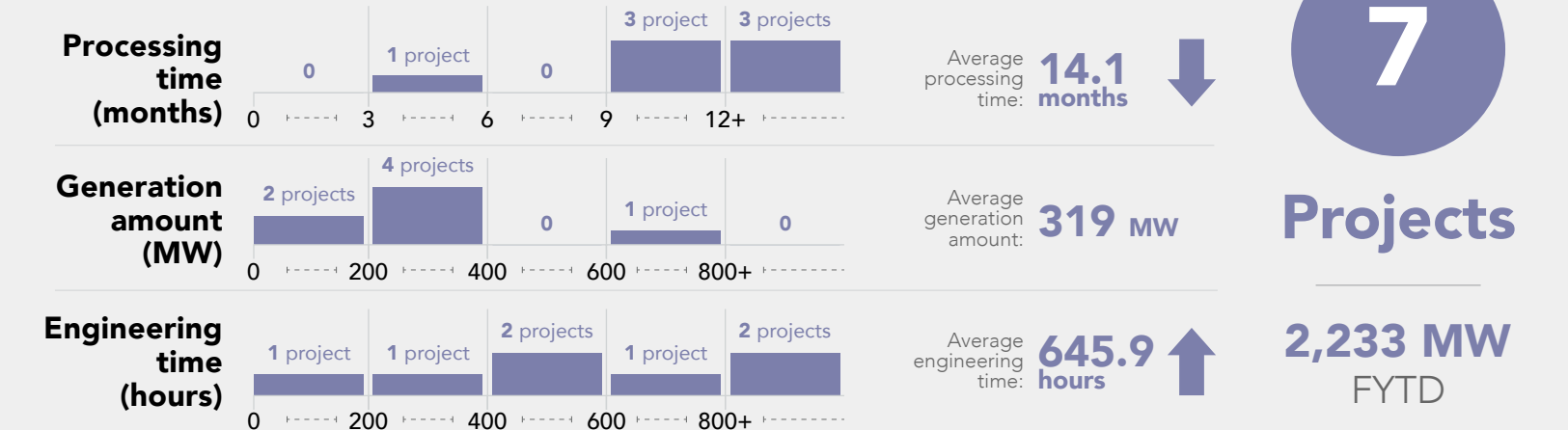
Connections snapshot as at 7 October 2022



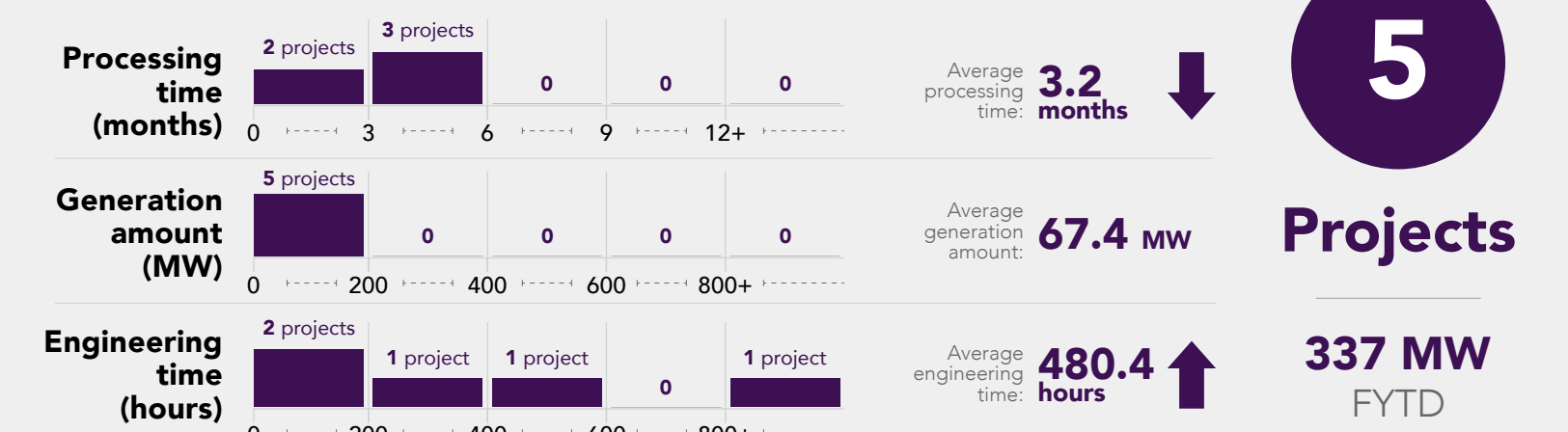
^ Connections scorecard data as at 7 October 2022

\* Enquiries are taken from July KCI data and only include TNSP connections

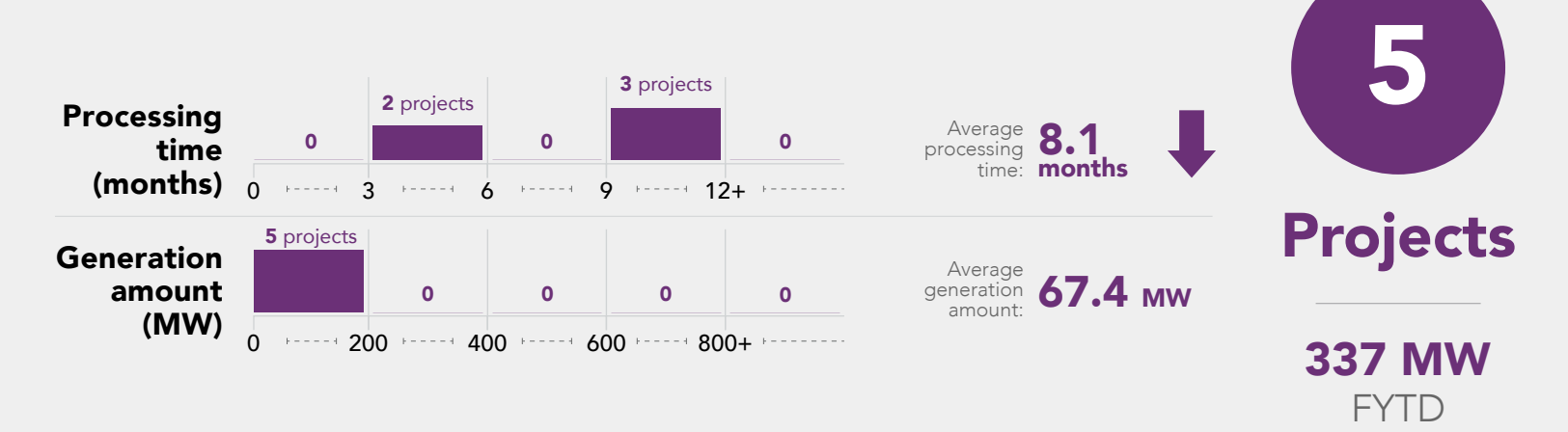
## Connection application approved



## R1 compliance confirmed



## Market registration approved



## Commissioning approved

