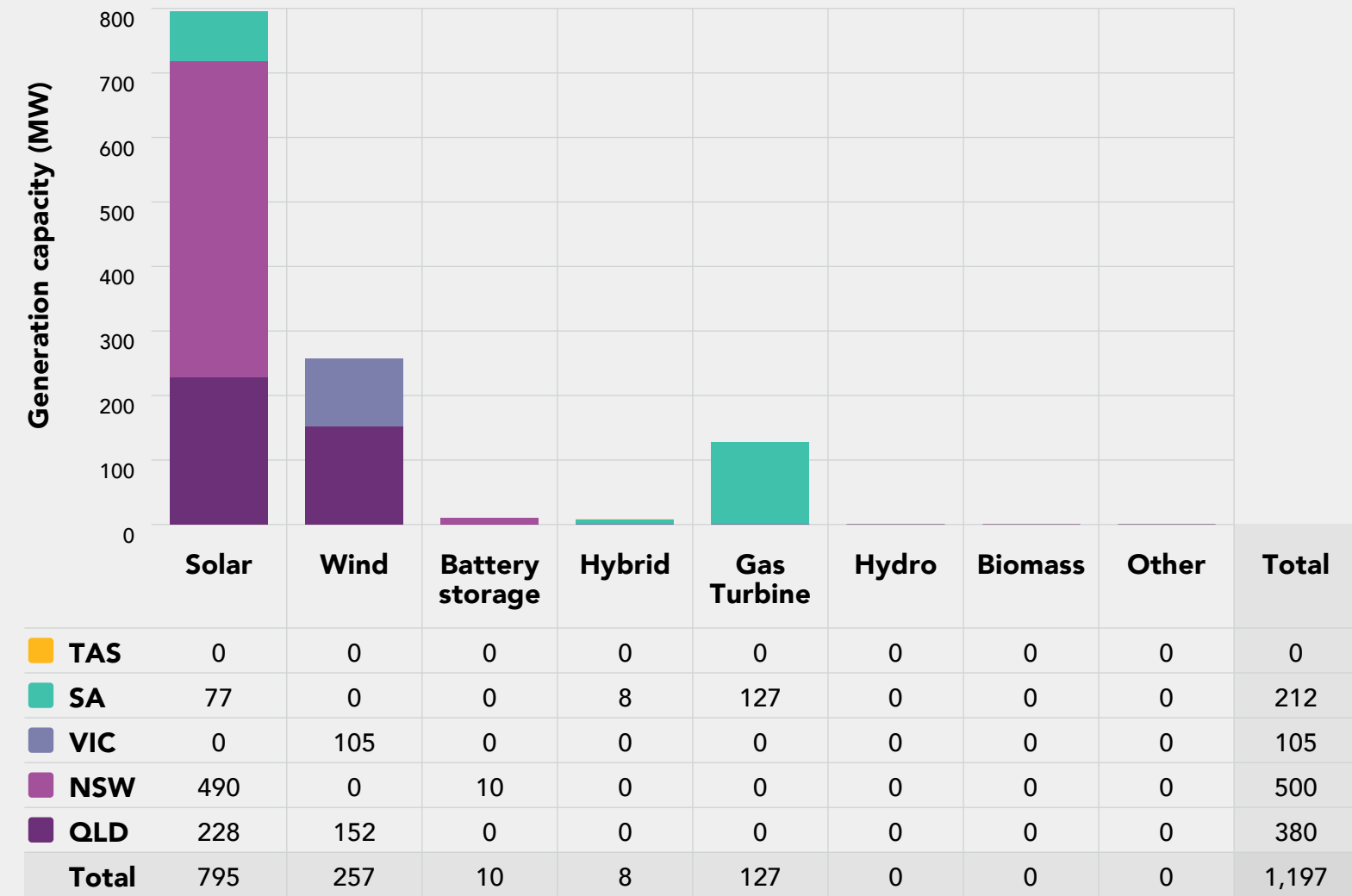
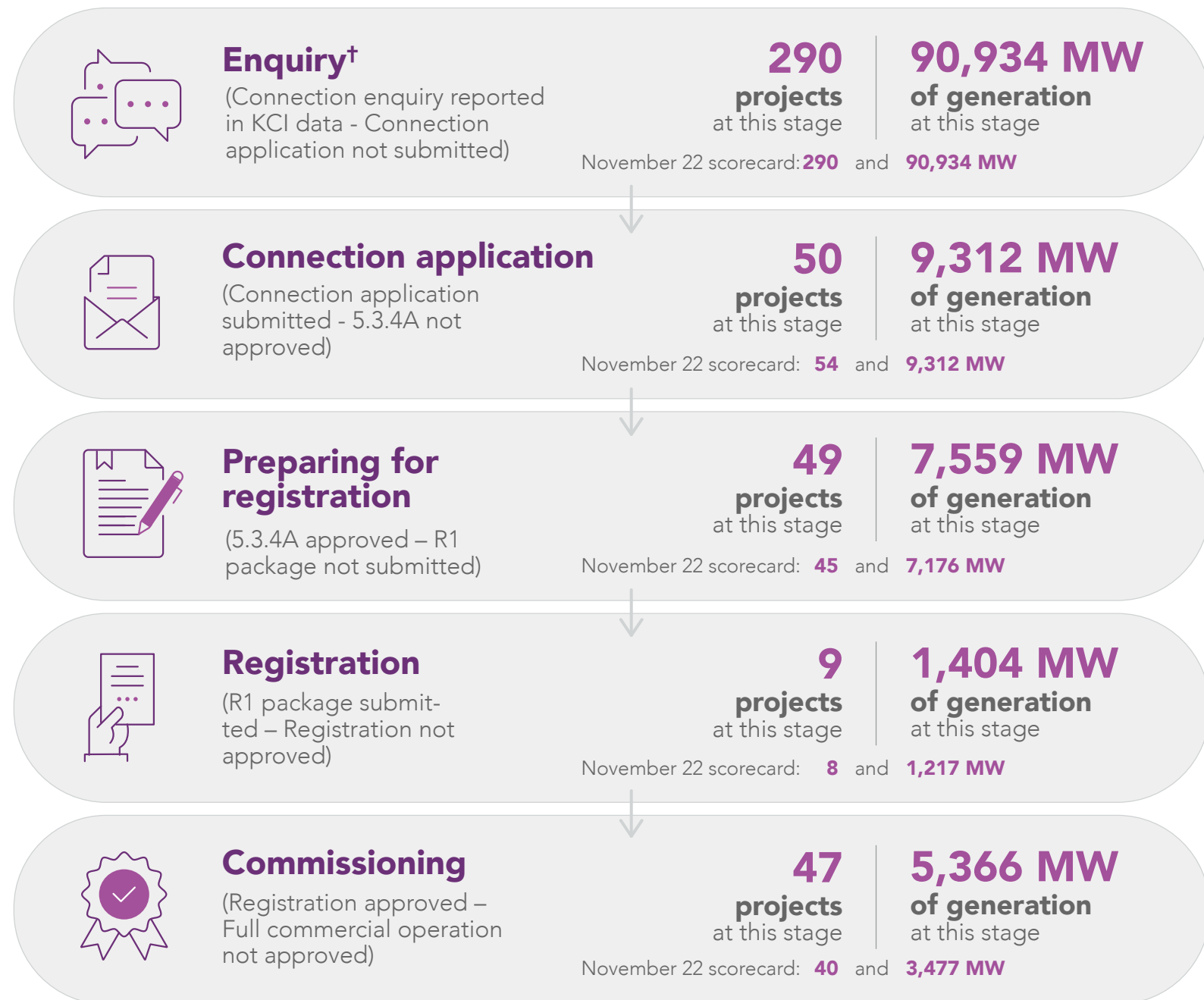


Connections scorecard

NEM generation registered FYTD

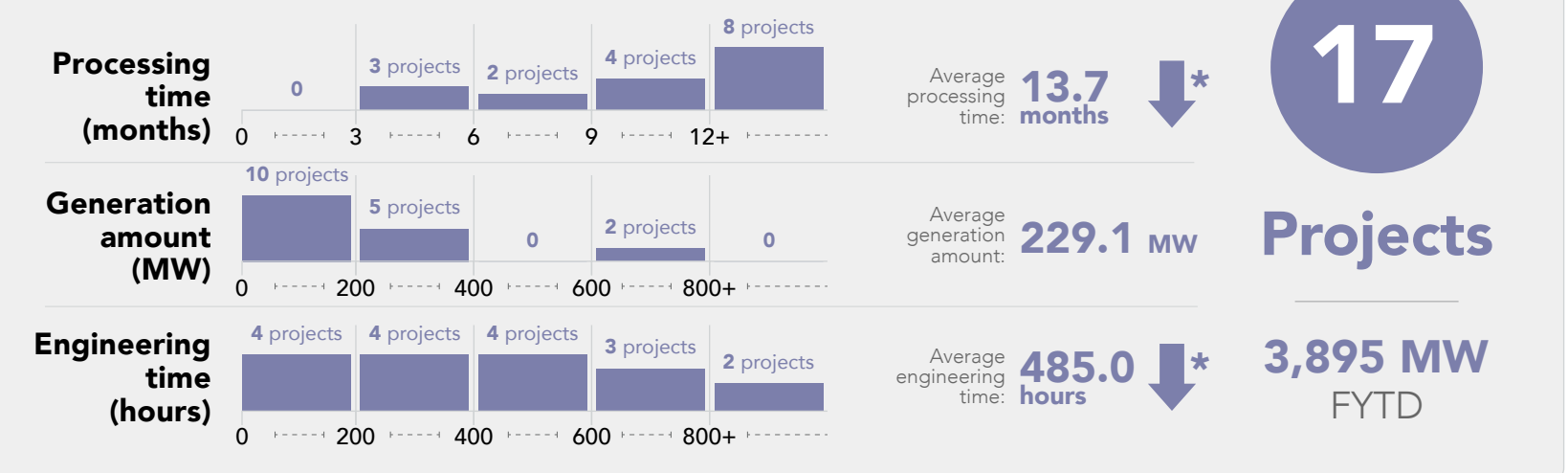


Connections snapshot as at 9 January 2023

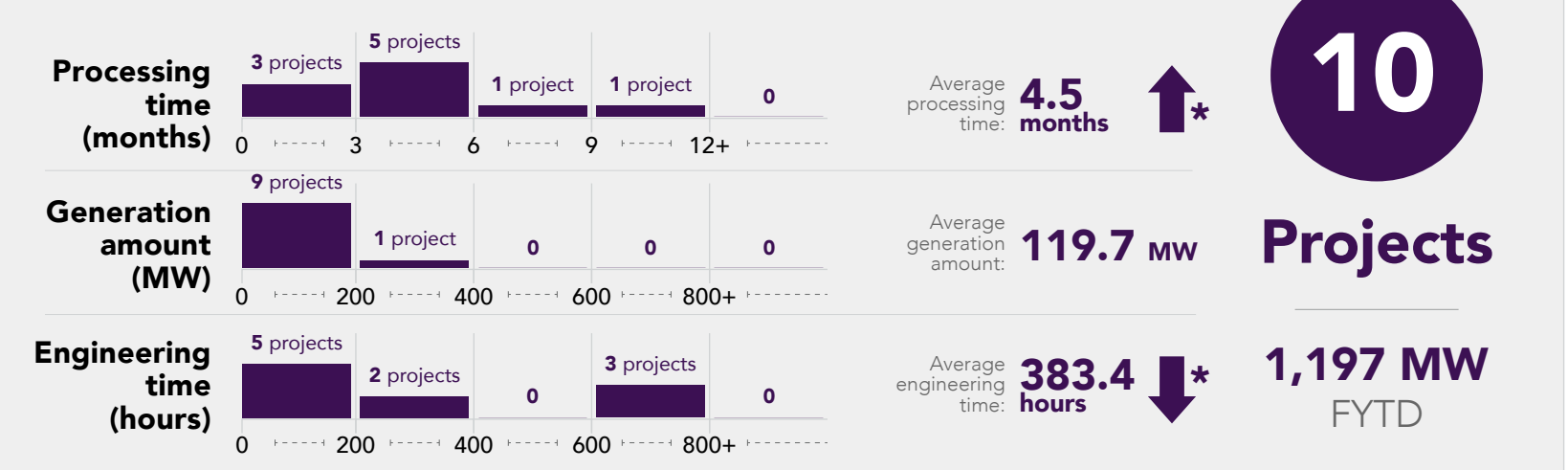


[^] Connections scorecard data as at 9 January 2023
[†] Enquiries are taken from November KCI data and only include TNSP connections
^{*} Compared to connections scorecard data as at 7 November 2022

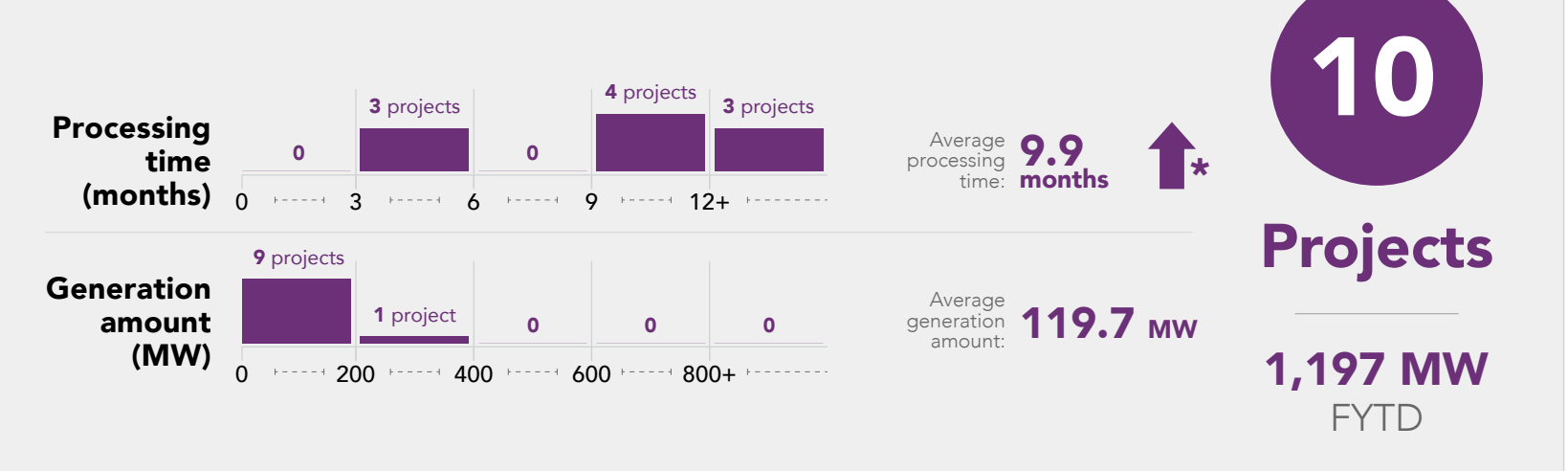
Connection application approved



R1 compliance confirmed



Market registration approved



Commissioning approved

