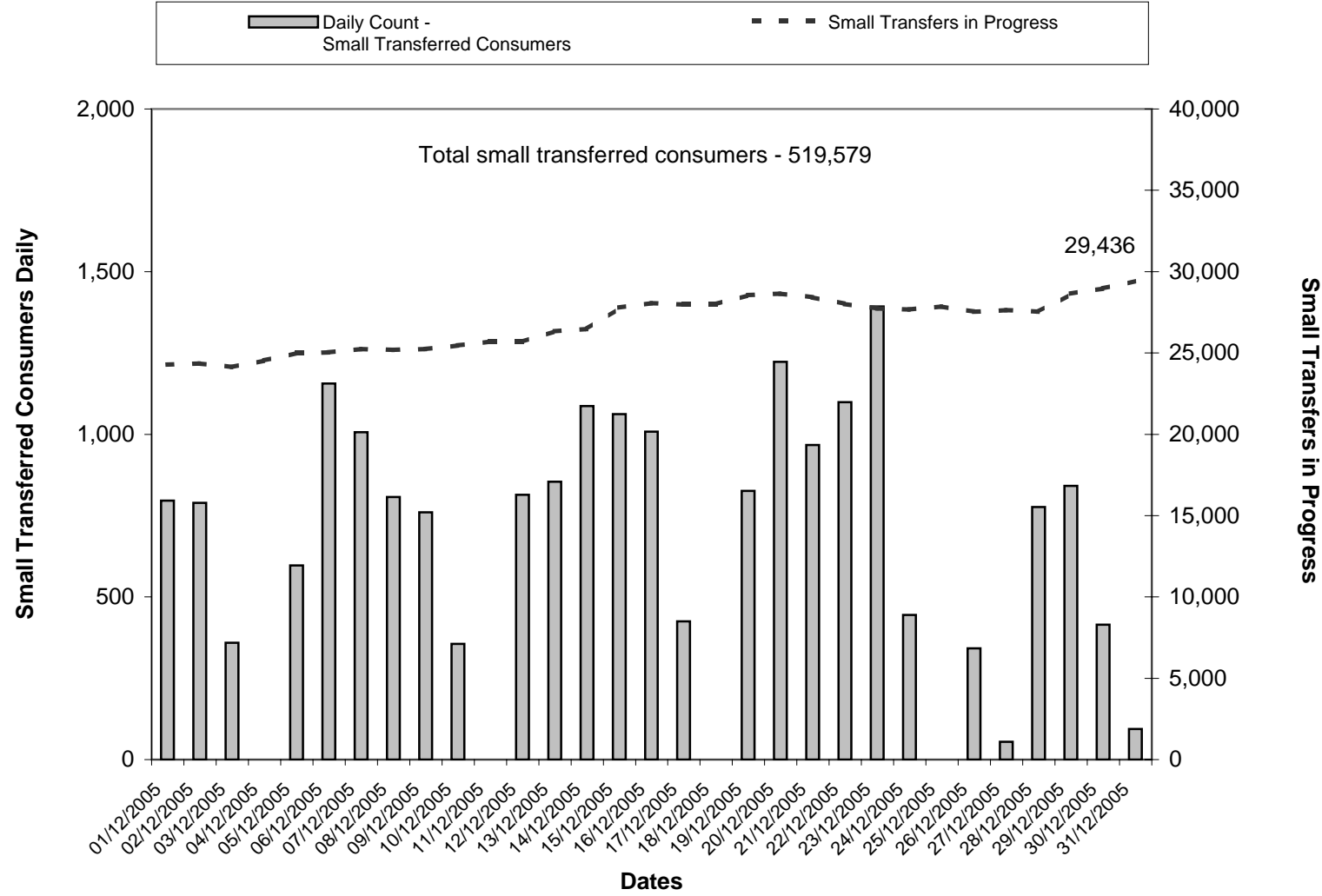
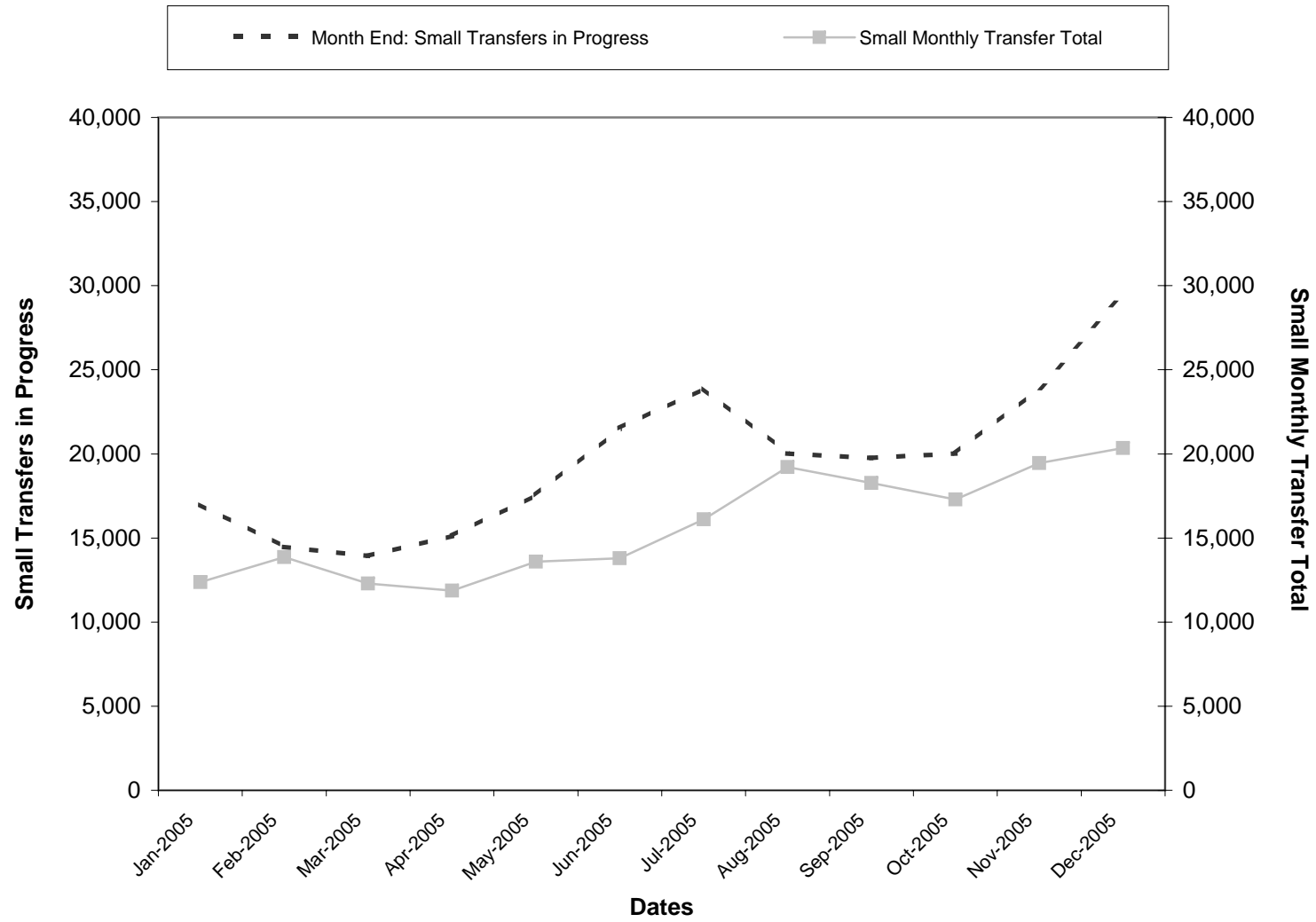


NSW - December 2005



NSW - 12 Months to December 2005



Date	M53 NSWSMALL_COM	Daily Count - Large	M42 NSWRTNWS_COM	Daily total of NSW (large & small)	ACCUMULATIVE		NSWRT12SMALL_INP	NSWRT22SMALL_INP	NSWRT21SMALL_INP	M31	NSWRTNWS_INP
	Daily Count - Small Transferred Consumers		Total Small transferred consumers		ACCUMULATIVE Total transferred consumers non-wholesale, NSW	Small Transfers in Progress				Total transfers in progress	
01/01/2003	125			136	58,325	70,213	14,935	93	140	15,168	15605
02/01/2003	137			468	58,462	70,681	14,941	90	125	15,156	15265
03/01/2003	240			240	58,702	70,921	15,265	87	117	15,469	15578
04/01/2003	214			214	58,916	71,135	15,063	86	118	15,267	15376
05/01/2003	75			75	58,991	71,210	14,988	86	118	15,192	15301
06/01/2003	66			72	59,057	71,282	15,054	86	103	15,243	15346
07/01/2003	373			375	59,430	71,657	15,025	84	115	15,224	15327
08/01/2003	682			684	60,112	72,341	15,401	84	135	15,620	15725
09/01/2003	419			423	60,531	72,764	15,058	82	139	15,279	15379
10/01/2003	483			485	61,014	73,249	14,870	84	140	15,094	15196
11/01/2003	307			307	61,321	73,556	14,567	80	139	14,786	14888
12/01/2003	0			0	61,321	73,556	14,615	80	139	14,834	14936
13/01/2003	223			226	61,544	73,782	14,519	80	158	14,757	14860
14/01/2003	485			492	62,029	74,274	14,141	80	176	14,397	14496
15/01/2003	526			527	62,555	74,801	13,719	78	179	13,976	14074
16/01/2003	464			469	63,019	75,270	13,312	78	181	13,571	13671
17/01/2003	484			488	63,503	75,758	14,476	79	167	14,722	14820
18/01/2003	177			177	63,680	75,935	14,298	77	168	14,543	14641
19/01/2003	0			0	63,680	75,935	14,289	77	168	14,534	14632
20/01/2003	97			98	63,777	76,033	15,068	82	182	15,332	15433
21/01/2003	341			344	64,118	76,377	15,236	82	174	15,492	15597
22/01/2003	340			341	64,458	76,718	15,301	83	212	15,596	15703
23/01/2003	466			468	64,924	77,186	15,155	83	193	15,431	15541
24/01/2003	490			529	65,414	77,715	14,986	80	210	15,276	15351
25/01/2003	245			245	65,659	77,960	14,755	80	255	15,090	15165
26/01/2003	1			1	65,660	77,961	14,799	80	254	15,133	15211
27/01/2003	0			0	65,660	77,961	14,798	80	254	15,132	15211
28/01/2003	138			146	65,798	78,107	14,915	81	238	15,234	15308
29/01/2003	514			520	66,312	78,627	14,610	80	256	14,946	15018
30/01/2003	460			462	66,772	79,089	14,784	82	351	15,217	15290
31/01/2003	429			434	67,201	79,523	14,963	83	380	15,426	15498
01/02/2003	248			252	67,449	79,775	14,713	82	380	15,175	15243
02/02/2003	0			0	67,449	79,775	14,766	83	382	15,231	15299
03/02/2003	171			180	67,620	79,955	14,922	87	370	15,379	15442
04/02/2003	296			300	67,916	80,255	14,809	87	326	15,222	15287
05/02/2003	500			501	68,416	80,756	14,816	87	318	15,221	15291
06/02/2003	245			247	68,661	81,003	15,060	89	311	15,460	15530
07/02/2003	519			524	69,180	81,527	15,407	80	255	15,742	15817
08/02/2003	399			399	69,579	81,926	15,013	79	250	15,342	15417
09/02/2003	0			0	69,579	81,926	15,066	81	250	15,397	15472
10/02/2003	78			85	69,657	82,011	15,149	82	301	15,532	15603
11/02/2003	598			600	70,255	82,611	14,943	84	329	15,356	15435
12/02/2003	602			611	70,857	83,222	14,577	87	339	15,003	15074
13/02/2003	705			709	71,562	83,931	14,085	86	291	14,462	14532
14/02/2003	458			469	72,020	84,400	13,906	88	269	14,263	14325
15/02/2003	436			437	72,456	84,837	13,476	85	269	13,830	13891
16/02/2003	0			0	72,456	84,837	13,488	85	269	13,842	13903
17/02/2003	172			177	72,628	85,014	13,406	83	289	13,778	13836
18/02/2003	382			389	73,010	85,403	13,232	82	287	13,601	13655
19/02/2003	521			522	73,531	85,925	13,188	82	306	13,576	13631
20/02/2003	515			516	74,046	86,441	12,956	81	293	13,330	13388
21/02/2003	474			474	74,520	86,915	13,376	84	281	13,741	13800
22/02/2003	0			2	74,520	86,917	13,425	84	285	13,794	13851
23/02/2003	0			0	74,520	86,917	13,476	84	287	13,847	13904
24/02/2003	481			486	75,001	87,403	13,599	91	279	13,969	14023
25/02/2003	277			280	75,278	87,683	13,449	92	287	13,828	13885
26/02/2003	466			467	75,744	88,150	13,243	92	287	13,622	13682

27/02/2003	349	350	76,093	88,500	14,309	105	301	14,715	14777
28/02/2003	365	365	76,458	88,865	14,349	109	315	14,773	14837
01/03/2003	222	223	76,680	89,088	14,136	109	308	14,553	14616
02/03/2003	0	0	76,680	89,088	14,136	109	308	14,553	14616
03/03/2003	132	139	76,812	89,227	14,132	111	303	14,546	14613
04/03/2003	437	445	77,249	89,672	13,874	107	285	14,266	14326
05/03/2003	352	358	77,601	90,030	14,533	108	285	14,926	14985
06/03/2003	352	356	77,953	90,386	14,439	105	300	14,844	14904
07/03/2003	252	257	78,205	90,643	14,394	101	293	14,788	14851
08/03/2003	145	145	78,350	90,788	14,259	96	288	14,643	14706
09/03/2003	0	0	78,350	90,788	14,297	97	288	14,682	14745
10/03/2003	132	135	78,482	90,923	15,454	101	298	15,853	15917
11/03/2003	493	495	78,975	91,418	15,017	98	292	15,407	15472
12/03/2003	529	536	79,504	91,954	15,579	101	282	15,962	16024
13/03/2003	504	510	80,008	92,464	15,150	101	292	15,543	15602
14/03/2003	297	300	80,305	92,764	15,094	103	293	15,490	15550
15/03/2003	158	158	80,463	92,922	14,943	103	290	15,336	15396
16/03/2003	0	0	80,463	92,922	14,984	103	290	15,377	15437
17/03/2003	141	141	80,604	93,063	14,807	105	344	15,256	15317
18/03/2003	383	385	80,987	93,448	15,374	102	314	15,790	15850
19/03/2003	529	532	81,516	93,980	14,920	103	335	15,358	15421
20/03/2003	423	423	81,939	94,403	15,237	101	306	15,644	15710
21/03/2003	409	412	82,348	94,815	14,909	101	306	15,316	15393
22/03/2003	593	593	82,941	95,408	14,321	98	314	14,733	14810
23/03/2003	0	0	82,941	95,408	14,365	98	314	14,777	14854
24/03/2003	153	154	83,094	95,562	14,681	99	313	15,093	15169
25/03/2003	306	307	83,400	95,869	14,619	100	314	15,033	15110
26/03/2003	402	404	83,802	96,273	14,460	99	301	14,860	14935
27/03/2003	550	551	84,352	96,824	14,024	97	265	14,386	14464
28/03/2003	334	335	84,686	97,159	14,271	98	272	14,641	14722
29/03/2003	262	262	84,948	97,421	14,018	102	268	14,388	14469
30/03/2003	0	0	84,948	97,421	14,018	102	268	14,388	14469
31/03/2003	205	206	85,153	97,627	14,123	102	262	14,487	14567
01/04/2003	328	363	85,481	97,990	14,031	102	307	14,440	14490
02/04/2003	400	403	85,881	98,393	13,843	99	317	14,259	14308
03/04/2003	197	199	86,078	98,592	13,934	100	317	14,351	14394
04/04/2003	400	407	86,478	98,999	13,911	100	269	14,280	14323
05/04/2003	487	487	86,965	99,486	13,500	96	261	13,857	13900
06/04/2003	0	0	86,965	99,486	13,524	96	261	13,881	13924
07/04/2003	164	169	87,129	99,655	13,461	95	265	13,821	13863
08/04/2003	622	622	87,751	100,277	12,926	93	296	13,315	13360
09/04/2003	378	380	88,129	100,657	12,929	94	281	13,304	13350
10/04/2003	657	657	88,786	101,314	12,328	86	306	12,720	12766
11/04/2003	540	541	89,326	101,855	12,275	83	274	12,632	12680
12/04/2003	414	414	89,740	102,269	11,886	79	268	12,233	12281
13/04/2003	0	0	89,740	102,269	11,886	79	268	12,233	12281
14/04/2003	158	161	89,898	102,430	11,815	79	282	12,176	12224
15/04/2003	511	512	90,409	102,942	11,430	79	279	11,788	11839
16/04/2003	485	488	90,894	103,430	11,653	72	273	11,998	12052
17/04/2003	601	603	91,495	104,033	11,166	72	232	11,470	11522
18/04/2003	329	329	91,824	104,362	10,845	68	229	11,142	11194
19/04/2003	0	0	91,824	104,362	10,845	68	229	11,142	11194
20/04/2003	0	0	91,824	104,362	10,845	68	229	11,142	11194
21/04/2003	3	3	91,827	104,365	10,842	68	230	11,140	11192
22/04/2003	171	171	91,998	104,536	10,768	68	238	11,074	11127
23/04/2003	528	530	92,526	105,066	10,716	69	233	11,018	11069
24/04/2003	433	434	92,959	105,500	10,638	67	288	10,993	11048
25/04/2003	324	324	93,283	105,824	10,323	64	285	10,672	10727
26/04/2003	0	0	93,283	105,824	10,336	64	287	10,687	10742
27/04/2003	0	0	93,283	105,824	10,336	64	287	10,687	10742
28/04/2003	127	127	93,410	105,951	10,344	66	281	10,691	10747
29/04/2003	285	289	93,695	106,240	10,130	66	312	10,508	10561
30/04/2003	406	408	94,101	106,648	9,821	63	320	10,204	10261

01/05/2003	464	470	94,565	107,118	9,466	65	293	9,824	9877
02/05/2003	424	426	94,989	107,544	9,126	66	273	9,465	9518
03/05/2003	254	254	95,243	107,798	8,882	66	266	9,214	9267
04/05/2003	0	0	95,243	107,798	8,882	66	266	9,214	9267
05/05/2003	116	116	95,359	107,914	9,762	71	277	10,110	10163
06/05/2003	193	194	95,552	108,108	9,926	70	323	10,319	10381
07/05/2003	371	372	95,923	108,480	9,619	67	362	10,048	10119
08/05/2003	355	355	96,278	108,835	9,744	68	404	10,216	10289
09/05/2003	370	372	96,648	109,207	9,710	70	444	10,224	10303
10/05/2003	223	223	96,871	109,430	9,502	69	430	10,001	10080
11/05/2003	0	0	96,871	109,430	9,502	69	431	10,002	10081
12/05/2003	115	126	96,986	109,556	9,460	70	440	9,970	10045
13/05/2003	347	350	97,333	109,906	9,197	68	468	9,733	9810
14/05/2003	430	430	97,763	110,336	8,924	67	447	9,438	9520
15/05/2003	375	376	98,138	110,712	9,318	66	472	9,856	9939
16/05/2003	409	413	98,547	111,125	9,434	63	454	9,951	10034
17/05/2003	207	207	98,754	111,332	9,253	62	437	9,752	9835
18/05/2003	0	0	98,754	111,332	9,253	62	437	9,752	9835
19/05/2003	141	143	98,895	111,475	9,599	64	453	10,116	10201
20/05/2003	433	435	99,328	111,910	9,465	61	481	10,007	10116
21/05/2003	466	468	99,794	112,378	9,077	61	462	9,600	9714
22/05/2003	561	563	100,355	112,941	8,885	61	443	9,389	9515
23/05/2003	621	623	100,976	113,564	8,493	53	478	9,024	9149
24/05/2003	443	443	101,419	114,007	8,102	53	455	8,610	8735
25/05/2003	0	0	101,419	114,007	8,102	53	455	8,610	8735
26/05/2003	108	109	101,527	114,116	8,113	55	471	8,639	8767
27/05/2003	649	651	102,176	114,767	7,781	56	439	8,276	8411
28/05/2003	457	458	102,633	115,225	7,523	57	422	8,002	8139
29/05/2003	578	578	103,211	115,803	7,308	53	408	7,769	7910
30/05/2003	380	381	103,591	116,184	7,140	52	399	7,591	7751
31/05/2003	348	348	103,939	116,532	6,915	55	377	7,347	7506
01/06/2003	0	0	103,939	116,532	7,610	59	377	8,046	8205
02/06/2003	154	162	104,093	116,694	8,024	59	323	8,406	8563
03/06/2003	597	602	104,690	117,296	10,847	64	290	11,201	11375
04/06/2003	401	409	105,091	117,705	10,643	63	284	10,990	11166
05/06/2003	342	349	105,433	118,054	10,695	63	309	11,067	11253
06/06/2003	500	506	105,933	118,560	10,376	62	337	10,775	11004
07/06/2003	220	220	106,153	118,780	10,217	58	323	10,598	10827
08/06/2003	0	0	106,153	118,780	10,215	58	323	10,596	10825
09/06/2003	0	0	106,153	118,780	10,216	58	323	10,597	10826
10/06/2003	148	150	106,301	118,930	10,544	59	330	10,933	11181
11/06/2003	328	331	106,629	119,261	10,499	56	353	10,908	11161
12/06/2003	470	473	107,099	119,734	10,131	54	315	10,500	10761
13/06/2003	389	393	107,488	120,127	10,182	56	296	10,534	10814
14/06/2003	160	160	107,648	120,287	10,262	59	290	10,611	10891
15/06/2003	0	0	107,648	120,287	10,291	62	290	10,643	10923
16/06/2003	181	181	107,829	120,468	10,215	63	367	10,645	10951
17/06/2003	497	497	108,326	120,965	10,003	65	365	10,433	10784
18/06/2003	466	472	108,792	121,437	9,765	62	332	10,159	10553
19/06/2003	676	678	109,468	122,115	9,249	64	287	9,600	9998
20/06/2003	573	579	110,041	122,694	8,818	62	249	9,129	9545
21/06/2003	434	434	110,475	123,128	8,390	62	244	8,696	9112
22/06/2003	0	0	110,475	123,128	8,386	62	245	8,693	9109
23/06/2003	481	482	110,956	123,610	8,483	64	242	8,789	9226
24/06/2003	453	461	111,409	124,071	9,685	67	225	9,977	10416
25/06/2003	356	357	111,765	124,428	10,743	75	204	11,022	11485
26/06/2003	383	385	112,148	124,813	10,914	78	199	11,191	11735
27/06/2003	203	203	112,351	125,016	11,108	78	225	11,411	11956
28/06/2003	107	107	112,458	125,123	11,083	77	224	11,384	11929
29/06/2003	0	0	112,458	125,123	11,076	77	225	11,378	11923
30/06/2003	138	140	112,596	125,263	11,223	79	274	11,576	12127

	NSWSMALL_COM	NSWRTNWS_COM		ACCUMULATIVE	ACCUMULATIVE	C5 REPORT IMPLEMENTED				NSWRTNWS_INP
Date	Daily Count - Small Transferred Consumers	Daily Count - Large	Daily total of NSW (large & small)	Total Small transferred consumers	Total transferred consumers non-wholesale, NSW	Monthly M53	Monthly M42	NSWRT21SMALL_INP	Small Transfers in Progress	Total transfers in progress
01/07/2003	350		620	112,946	125,883				11,335	
02/07/2003	268		331	113,214	126,214				11,572	
03/07/2003	596		634	113,810	126,848				11,231	
04/07/2003	206		219	114,016	127,067				11,496	
05/07/2003	182		184	114,198	127,251				11,328	
06/07/2003	0		0	114,198	127,251				11,328	
07/07/2003	107		129	114,305	127,380				11,350	
08/07/2003	415		437	114,720	127,817				11,231	
09/07/2003	269		304	114,989	128,121				11,219	
10/07/2003	314		319	115,303	128,440				11,376	
11/07/2003	221		236	115,524	128,676				11,311	
12/07/2003	143		143	115,667	128,819				11,234	
13/07/2003	0		0	115,667	128,819				11,234	
14/07/2003	158		164	115,825	128,983				11,362	
15/07/2003	334		337	116,159	129,320				11,926	
16/07/2003	289		296	116,448	129,616				11,742	
17/07/2003	306		309	116,754	129,925				11,634	
18/07/2003	360		376	117,114	130,301				11,594	
19/07/2003	189		189	117,303	130,490				11,422	
20/07/2003	0		0	117,303	130,490				11,424	
21/07/2003	94		105	117,397	130,595				11,440	
22/07/2003	208		212	117,605	130,807				11,795	
23/07/2003	431		433	118,036	131,240				11,626	
24/07/2003	302		312	118,338	131,552				11,611	
25/07/2003	133		141	118,471	131,693				12,039	
26/07/2003	419		419	118,890	132,112				11,877	
27/07/2003	0		0	118,890	132,112				11,880	
28/07/2003	113		117	119,003	132,229				11,921	
29/07/2003	234		242	119,237	132,471				11,913	
30/07/2003	277		285	119,514	132,756				12,578	
31/07/2003	422		425	119,936	133,181	7,340		7,918	12,408	
01/08/2003	400		450	120,336	133,631				12,604	
02/08/2003	170		170	120,506	133,801				12,684	
03/08/2003	0		0	120,506	133,801				12,684	
04/08/2003	226		247	120,732	134,048				12,780	
05/08/2003	304		329	121,036	134,377				13,014	
06/08/2003	354		522	121,390	134,899				12,835	
07/08/2003	360		367	121,750	135,266				12,635	
08/08/2003	411		413	122,161	135,679				12,588	
09/08/2003	170		170	122,331	135,849				12,492	
10/08/2003	0		0	122,331	135,849				12,492	
11/08/2003	165		170	122,496	136,019				12,549	
12/08/2003	226		229	122,722	136,248				12,645	
13/08/2003	361		549	123,083	136,797				12,519	
14/08/2003	365		430	123,448	137,227				12,494	
15/08/2003	459		465	123,907	137,692				12,459	
16/08/2003	333		333	124,240	138,025				12,128	
17/08/2003	0		0	124,240	138,025				12,134	
18/08/2003	210		257	124,450	138,282				12,377	
19/08/2003	673		724	125,123	139,006				11,994	
20/08/2003	391		551	125,514	139,557				11,822	
21/08/2003	528		528	126,042	140,085				11,769	
22/08/2003	302		312	126,344	140,397				12,044	
23/08/2003	154		154	126,498	140,551				11,927	
24/08/2003	0		0	126,498	140,551				11,937	
25/08/2003	148		153	126,646	140,704				12,245	
26/08/2003	265		275	126,911	140,979				12,671	
27/08/2003	282		289	127,193	141,268				12,807	

28/08/2003	403	455	127,596	141,723		12,833
29/08/2003	547	556	128,143	142,279		12,867
30/08/2003	309	309	128,452	142,588		12,550
31/08/2003	0	0	128,452	142,588	8,516	9,407
01/09/2003	118	132	128,570	142,720		12,723
02/09/2003	317	327	128,887	143,047		12,886
03/09/2003	252	264	129,139	143,311		12,769
04/09/2003	467	469	129,606	143,780		12,670
05/09/2003	299	303	129,905	144,083		12,953
06/09/2003	373	373	130,278	144,456		12,573
07/09/2003	0	0	130,278	144,456		12,603
08/09/2003	165	172	130,443	144,628		12,650
09/09/2003	434	436	130,877	145,064		12,406
10/09/2003	589	597	131,466	145,661		12,462
11/09/2003	374	378	131,840	146,039		12,406
12/09/2003	69	72	131,909	146,111		12,361
13/09/2003	853	853	132,762	146,964		12,431
14/09/2003	0	0	132,762	146,964		12,479
15/09/2003	107	112	132,869	147,076		12,895
16/09/2003	234	235	133,103	147,311		13,267
17/09/2003	799	921	133,902	148,232		12,798
18/09/2003	492	567	134,394	148,799		12,964
19/09/2003	289	425	134,683	149,224		13,357
20/09/2003	380	380	135,063	149,604		12,978
21/09/2003	0	0	135,063	149,604		12,995
22/09/2003	200	200	135,263	149,804		13,111
23/09/2003	395	518	135,658	150,322		13,146
24/09/2003	377	416	136,035	150,738		13,023
25/09/2003	356	361	136,391	151,099		13,077
26/09/2003	582	586	136,973	151,685		13,124
27/09/2003	209	209	137,182	151,894		13,093
28/09/2003	0	0	137,182	151,894		13,219
29/09/2003	322	372	137,504	152,266		13,266
30/09/2003	398	520	137,902	152,786	9,450	10,198
01/10/2003	374	398	138,276	153,184		13,345
02/10/2003	267	270	138,543	153,454		13,597
03/10/2003	212	215	138,755	153,669		13,821
04/10/2003	199	199	138,954	153,868		13,639
05/10/2003	0	0	138,954	153,868		13,639
06/10/2003	24	24	138,978	153,892		13,622
07/10/2003	159	160	139,137	154,052		14,065
08/10/2003	505	507	139,642	154,559		13,905
09/10/2003	484	485	140,126	155,044		13,680
10/10/2003	324	328	140,450	155,372		13,533
11/10/2003	317	317	140,767	155,689		13,302
12/10/2003	0	0	140,767	155,689		13,302
13/10/2003	239	245	141,006	155,934		13,190
14/10/2003	424	427	141,430	156,361		12,960
15/10/2003	630	633	142,060	156,994		12,809
16/10/2003	529	532	142,589	157,526		12,592
17/10/2003	355	357	142,944	157,883		12,996
18/10/2003	200	200	143,144	158,083		13,384
19/10/2003	0	0	143,144	158,083		13,647
20/10/2003	628	631	143,772	158,714		13,772
21/10/2003	621	621	144,393	159,335		14,249
22/10/2003	826	826	145,219	160,161		14,071
23/10/2003	707	731	145,926	160,892		13,711
24/10/2003	776	777	146,702	161,669		13,342
25/10/2003	349	349	147,051	162,018		13,157
26/10/2003	0	0	147,051	162,018		13,507
27/10/2003	296	302	147,347	162,320		13,561
28/10/2003	462	464	147,809	162,784		13,674
29/10/2003	405	406	148,214	163,190		13,710

30/10/2003	487		493	148,701	163,683		13,619
31/10/2003	345		347	149,046	164,030	11,144	13,621
01/11/2003	235		235	149,281	164,265		13,613
02/11/2003	0		0	149,281	164,265		13,677
03/11/2003	720		732	150,001	164,997		13,138
04/11/2003	293		296	150,294	165,293		13,309
05/11/2003	327		329	150,621	165,622		13,160
06/11/2003	539		541	151,160	166,163		12,812
07/11/2003	459		465	151,619	166,628		12,680
08/11/2003	221		221	151,840	166,849		12,647
09/11/2003	0		0	151,840	166,849		12,789
10/11/2003	24		29	151,864	166,878		13,034
11/11/2003	651		655	152,515	167,533		12,956
12/11/2003	329		335	152,844	167,868		12,803
13/11/2003	550		554	153,394	168,422		12,770
14/11/2003	331		333	153,725	168,755		12,854
15/11/2003	435		435	154,160	169,190		12,503
16/11/2003	0		0	154,160	169,190		12,504
17/11/2003	469		471	154,629	169,661		12,311
18/11/2003	628		634	155,257	170,295		12,227
19/11/2003	523		523	155,780	170,818		12,033
20/11/2003	493		497	156,273	171,315		11,906
21/11/2003	837		841	157,110	172,156		11,624
22/11/2003	115		115	157,225	172,271		11,582
23/11/2003	0		0	157,225	172,271		11,587
24/11/2003	434		434	157,659	172,705		11,636
25/11/2003	272		277	157,931	172,982		11,853
26/11/2003	472		473	158,403	173,455		11,931
27/11/2003	268		268	158,671	173,723		12,186
28/11/2003	739		741	159,410	174,464		11,993
29/11/2003	153		153	159,563	174,617		11,948
30/11/2003	0		0	159,563	174,617	10,517	11,963
01/12/2003	50	11	61	159,613	174,678	10,587	12,186
02/12/2003	842	15	857	160,455	175,535		11,670
03/12/2003	780	5	785	161,235	176,320		11,436
04/12/2003	338	2	340	161,573	176,660		11,630
05/12/2003	687	3	690	162,260	177,350		11,300
06/12/2003	148	1	149	162,408	177,499		11,699
07/12/2003	0	0	0	162,408	177,499		11,718
08/12/2003	323	1	324	162,731	177,823		11,913
09/12/2003	367	0	367	163,098	178,190		12,023
10/12/2003	548	0	548	163,646	178,738		12,183
11/12/2003	447	14	461	164,093	179,199		12,167
12/12/2003	406	0	406	164,499	179,605		12,064
13/12/2003	374	0	374	164,873	179,979		11,679
14/12/2003	0	0	0	164,873	179,979		11,699
15/12/2003	199	2	201	165,072	180,180		12,234
16/12/2003	304	38	342	165,376	180,522		12,779
17/12/2003	675	8	683	166,051	181,205		12,873
18/12/2003	198	13	211	166,249	181,416		13,127
19/12/2003	851	3	854	167,100	182,270		12,606
20/12/2003	79	0	79	167,179	182,349		12,622
21/12/2003	0	0	0	167,179	182,349		12,637
22/12/2003	378	1	379	167,557	182,728		13,019
23/12/2003	179	8	187	167,736	182,915		13,606
24/12/2003	338	15	353	168,074	183,268		13,422
25/12/2003	0	0	0	168,074	183,268		13,460
26/12/2003	34	0	34	168,108	183,302		13,426
27/12/2003	0	0	0	168,108	183,302		13,426
28/12/2003	0	0	0	168,108	183,302		13,426
29/12/2003	292	56	348	168,400	183,650		13,333
30/12/2003	110	15	125	168,510	183,775		13,657
31/12/2003	288	13	301	168,798	184,076	9,235	14,314

01/01/2004	0	0	0	168,798	184,076		14,315
02/01/2004	180	39	219	168,978	184,295		15,214
03/01/2004	123	0	123	169,101	184,418		15,081
04/01/2004	0	0	0	169,101	184,418		15,081
05/01/2004	81	46	127	169,182	184,545		15,578
06/01/2004	285	3	288	169,467	184,833		15,803
07/01/2004	370	5	375	169,837	185,208		16,120
08/01/2004	474	4	478	170,311	185,686		16,573
09/01/2004	622	4	626	170,933	186,312		16,503
10/01/2004	391	0	391	171,324	186,703		16,139
11/01/2004	0	0	0	171,324	186,703		16,139
12/01/2004	475	8	483	171,799	187,186		16,132
13/01/2004	529	40	569	172,328	187,755		15,973
14/01/2004	371	3	374	172,699	188,129		15,962
15/01/2004	631	6	637	173,330	188,766		15,873
16/01/2004	708	7	715	174,038	189,481		15,629
17/01/2004	718	0	718	174,756	190,199		14,997
18/01/2004	0	0	0	174,756	190,199		15,017
19/01/2004	217	4	221	174,973	190,420		15,112
20/01/2004	609	7	616	175,582	191,036		14,888
21/01/2004	500	4	504	176,082	191,540		14,921
22/01/2004	704	2	706	176,786	192,246		14,774
23/01/2004	703	1	704	177,489	192,950		14,616
24/01/2004	446	0	446	177,935	193,396		14,304
25/01/2004	0	0	0	177,935	193,396		14,361
26/01/2004	0	0	0	177,935	193,396		14,369
27/01/2004	282	5	287	178,217	193,683		14,578
28/01/2004	709	2	711	178,926	194,394		14,597
29/01/2004	664	0	664	179,590	195,058		14,431
30/01/2004	466	1	467	180,056	195,525		14,365
31/01/2004	667	0	667	180,723	196,192	11,925	13,981
01/02/2004	0		0	180,723	196,192		14,060
02/02/2004	220		231	180,943	196,423		14,069
03/02/2004	341		343	181,284	196,766		14,098
04/02/2004	550		555	181,834	197,321		14,219
05/02/2004	827		834	182,661	198,155		13889
06/02/2004	360		366	183,021	198,521		13955
07/02/2004	121		121	183,142	198,642		13924
08/02/2004	0		1	183,142	198,643		14027
09/02/2004	427		432	183,569	199,075		14205
10/02/2004	561		569	184,130	199,644		14250
11/02/2004	757		758	184,887	200,402		13876
12/02/2004	368		368	185,255	200,770		14206
13/02/2004	605		605	185,860	201,375		14182
14/02/2004	0		0	185,860	201,375		14353
15/02/2004	0		0	185,860	201,375		14361
16/02/2004	580		609	186,440	201,984		14347
17/02/2004	486		488	186,926	202,472		14306
18/02/2004	678		681	187,604	203,153		14081
19/02/2004	492		495	188,096	203,648		14036
20/02/2004	564		579	188,660	204,227		14030
21/02/2004	265		265	188,925	204,492		13775
22/02/2004	0		0	188,925	204,492		13776
23/02/2004	422		422	189,347	204,914		14090
24/02/2004	758		760	190,105	205,674		13617
25/02/2004	515		517	190,620	206,191		13950
26/02/2004	409		411	191,029	206,602		14412
27/02/2004	524		529	191,553	207,131		14435
28/02/2004	150		150	191,703	207,281		14556
29/02/2004	0		0	191,703	207,281	10,980	14573
01/03/2004	352		369	192,055	207,650		14,699
02/03/2004	425		427	192,480	208,077		14,675
03/03/2004	682		682	193,162	208,759		14,878

04/03/2004	554	559	193,716	209,318		14,863
05/03/2004	707	707	194,423	210,025		14,793
06/03/2004	154	154	194,577	210,179		14,643
07/03/2004	0	0	194,577	210,179		14,643
08/03/2004	501	501	195,078	210,680		14,708
09/03/2004	531	532	195,609	211,212		15,027
10/03/2004	590	594	196,199	211,806		15,733
11/03/2004	503	503	196,702	212,309		16,381
12/03/2004	493	495	197,195	212,804		16,926
13/03/2004	141	141	197,336	212,945		17,061
14/03/2004	0	0	197,336	212,945		17,062
15/03/2004	525	528	197,861	213,473		16,958
16/03/2004	483	484	198,344	213,957		17,440
17/03/2004	918	918	199,262	214,875		16,975
18/03/2004	782	810	200,044	215,685		17,151
19/03/2004	646	650	200,690	216,335		17,221
20/03/2004	378	378	201,068	216,713		17,276
21/03/2004	0	0	201,068	216,713		17,352
22/03/2004	463	464	201,531	217,177		17,596
23/03/2004	627	631	202,158	217,808		17,864
24/03/2004	857	864	203,015	218,672		17,493
25/03/2004	750	750	203,765	219,422		17,046
26/03/2004	835	836	204,600	220,258		17,177
27/03/2004	394	394	204,994	220,652		17,078
28/03/2004	0	0	204,994	220,652		17,078
29/03/2004	531	534	205,525	221,186		16,930
30/03/2004	549	551	206,074	221,737		16,859
31/03/2004	847	849	206,921	222,586	15,218	15,305
01/04/2004	755	776	207,676	223,362		16,801
02/04/2004	722	753	208,398	224,115		16,890
03/04/2004	81	81	208,479	224,196		17,180
04/04/2004	0	0	208,479	224,196		17,152
05/04/2004	372	375	208,851	224,571		17,291
06/04/2004	349	351	209,200	224,922		17,920
07/04/2004	732	736	209,932	225,658		18,272
08/04/2004	965	967	210,897	226,625		18,315
09/04/2004	213	213	211,110	226,838		18,399
10/04/2004	0	0	211,110	226,838		18,186
11/04/2004	0	0	211,110	226,838		18,186
12/04/2004	0	0	211,110	226,838		18,217
13/04/2004	462	468	211,572	227,306		18,186
14/04/2004	482	485	212,054	227,791		17,807
15/04/2004	532	536	212,586	228,327		18,274
16/04/2004	742	743	213,328	229,070		18,934
17/04/2004	255	255	213,583	229,325		18,986
18/04/2004	0	0	213,583	229,325		19,189
19/04/2004	633	638	214,216	229,963		19,309
20/04/2004	568	568	214,784	230,531		19,352
21/04/2004	651	654	215,435	231,185		19,366
22/04/2004	686	688	216,121	231,873		19,309
23/04/2004	687	689	216,808	232,562		18,948
24/04/2004	240	240	217,048	232,802		19,001
25/04/2004	0	0	217,048	232,802		19,163
26/04/2004	99	106	217,147	232,908		19,271
27/04/2004	575	578	217,722	233,486		19,371
28/04/2004	240	244	217,962	233,730		19,153
29/04/2004	378	379	218,340	234,109		19,398
30/04/2004	775	777	219,115	234,886		19,502
01/05/2004	441	441	219,556	235,327	12,194	12,300
02/05/2004	0	0	219,556	235,327		19,115
03/05/2004	374	486	219,930	235,813		18,868
04/05/2004	600	648	220,530	236,461		19,188
05/05/2004	635	651	221,165	237,112		19,301
						19,176
						18,881

06/05/2004	604	629	221,769	237,741		18,857
07/05/2004	733	741	222,502	238,482		19,147
08/05/2004	114	114	222,616	238,596		19,827
09/05/2004	0	0	222,616	238,596		20,100
10/05/2004	366	375	222,982	238,971		20,111
11/05/2004	514	521	223,496	239,492		20,249
12/05/2004	805	811	224,301	240,303		20,152
13/05/2004	571	573	224,872	240,876		20,315
14/05/2004	736	742	225,608	241,618		19,914
15/05/2004	182	183	225,790	241,801		19,822
16/05/2004	0	0	225,790	241,801		19,948
17/05/2004	537	544	226,327	242,345		19,976
18/05/2004	716	718	227,043	243,063		19,882
19/05/2004	892	893	227,935	243,956		19,517
20/05/2004	856	864	228,791	244,820		19,194
21/05/2004	778	780	229,569	245,600		18,832
22/05/2004	235	235	229,804	245,835		18,795
23/05/2004	0	0	229,804	245,835		18,916
24/05/2004	120	122	229,924	245,957		19,380
25/05/2004	852	853	230,776	246,810		18,867
26/05/2004	765	769	231,541	247,579		18,471
27/05/2004	790	791	232,331	248,370		18,038
28/05/2004	717	719	233,048	249,089		17,803
29/05/2004	236	236	233,284	249,325		17,702
30/05/2004	0	0	233,284	249,325		17,832
31/05/2004	446	447	233,730	249,772	14,615	14,886
01/06/2004	599	619	234,329	250,391		17,502
02/06/2004	798	804	235,127	251,195		17,190
03/06/2004	631	633	235,758	251,828		17,101
04/06/2004	828	828	236,586	252,656		16,814
05/06/2004	170	170	236,756	252,826		16,797
06/06/2004	0	0	236,756	252,826		16,980
07/06/2004	534	538	237,290	253,364		17,025
08/06/2004	458	460	237,748	253,824		16,819
09/06/2004	485	489	238,233	254,313		16,561
10/06/2004	621	628	238,854	254,941		16,450
11/06/2004	1,174	1,174	240,028	256,115		15,719
12/06/2004	0	0	240,028	256,115		15,748
13/06/2004	0	0	240,028	256,115		15,803
14/06/2004	0	0	240,028	256,115		15,991
15/06/2004	495	496	240,523	256,611		15,809
16/06/2004	1,076	1,076	241,599	257,687		15,144
17/06/2004	536	539	242,135	258,226		14,894
18/06/2004	752	753	242,887	258,979		14,555
19/06/2004	318	318	243,205	259,297		14,318
20/06/2004	0	0	243,205	259,297		14,356
21/06/2004	350	351	243,555	259,648		14,558
22/06/2004	589	594	244,144	260,242		14,716
23/06/2004	907	910	245,051	261,152		14,124
24/06/2004	607	608	245,658	261,760		13,704
25/06/2004	759	761	246,417	262,521		13,272
26/06/2004	117	117	246,534	262,638		13,226
27/06/2004	0	0	246,534	262,638		13,320
28/06/2004	385	387	246,919	263,025		13,097
29/06/2004	455	456	247,374	263,481		13,003
30/06/2004	451	451	247,825	263,932	14,095	14,160
01/07/2004	550	1,022	248,375	264,954		12,501
02/07/2004	529	611	248,904	265,565		12,191
03/07/2004	92	92	248,996	265,657		12,108
04/07/2004	0	0	248,996	265,657		12,214
05/07/2004	437	467	249,433	266,124		12,241
06/07/2004	291	310	249,724	266,434		12,344
07/07/2004	696	721	250,420	267,155		12,047

08/07/2004	434	446	250,854	267,601		11,955
09/07/2004	576	583	251,430	268,184		11,880
10/07/2004	137	137	251,567	268,321		12,076
11/07/2004	0	0	251,567	268,321		12,208
12/07/2004	268	285	251,835	268,606		12,681
13/07/2004	307	310	252,142	268,916		12,928
14/07/2004	498	503	252,640	269,419		12,827
15/07/2004	497	509	253,137	269,928		12,665
16/07/2004	493	498	253,630	270,426		12,933
17/07/2004	148	149	253,778	270,575		13,274
18/07/2004	0	0	253,778	270,575		13,303
19/07/2004	643	645	254,421	271,220		12,943
20/07/2004	332	334	254,753	271,554		13,876
21/07/2004	556	561	255,309	272,115		13,895
22/07/2004	485	496	255,794	272,611		14,315
23/07/2004	576	579	256,370	273,190		14,528
24/07/2004	0	0	256,370	273,190		14,669
25/07/2004	0	0	256,370	273,190		14,810
26/07/2004	195	204	256,565	273,394		14,877
27/07/2004	226	226	256,791	273,620		15,087
28/07/2004	657	669	257,448	274,289		15,298
29/07/2004	887	891	258,335	275,180		15,122
30/07/2004	999	1,000	259,334	276,180		14,532
31/07/2004	129	129	259,463	276,309	11,638	12,377
01/08/2004	0	0	259,463	276,309		14,430
02/08/2004	303	328	259,766	276,637		14,479
03/08/2004	343	348	260,109	276,985		14,417
04/08/2004	376	380	260,485	277,365		15,037
05/08/2004	399	413	260,884	277,778		14,861
06/08/2004	539	542	261,423	278,320		15,103
07/08/2004	139	139	261,562	278,459		14,986
08/08/2004	0	0	261,562	278,459		15,084
09/08/2004	289	290	261,851	278,749		15,161
10/08/2004	330	333	262,181	279,082		15,333
11/08/2004	763	771	262,944	279,853		15,294
12/08/2004	554	561	263,498	280,414		14,913
13/08/2004	691	694	264,189	281,108		14,772
14/08/2004	234	234	264,423	281,342		14,717
15/08/2004	0	0	264,423	281,342		14,855
16/08/2004	395	399	264,818	281,741		14,919
17/08/2004	268	270	265,086	282,011		14,887
18/08/2004	541	545	265,627	282,556		15,039
19/08/2004	490	491	266,117	283,047		15,034
20/08/2004	504	510	266,621	283,557		14,955
21/08/2004	138	138	266,759	283,695		14,914
22/08/2004	0	0	266,759	283,695		14,827
23/08/2004	380	387	267,139	284,082		15,589
24/08/2004	574	574	267,713	284,656		16,119
25/08/2004	463	466	268,176	285,122		16,557
26/08/2004	688	694	268,864	285,816		17,037
27/08/2004	601	603	269,465	286,419		18,007
28/08/2004	218	218	269,683	286,637		18,842
29/08/2004	0	0	269,683	286,637		20,655
30/08/2004	252	257	269,935	286,894		20,677
31/08/2004	416	421	270,351	287,315	10,888	20,943
01/09/2004	513	593	270,864	287,908		20,821
02/09/2004	497	520	271,361	288,428		21,211
03/09/2004	631	636	271,992	289,064		21,309
04/09/2004	172	172	272,164	289,236		21,357
05/09/2004	0	0	272,164	289,236		21,196
06/09/2004	316	322	272,480	289,558		21,557
07/09/2004	534	538	273,014	290,096		21,545
08/09/2004	567	574	273,581	290,670		21,602
						22,362

09/09/2004	602	609	274,183	291,279		22,571
10/09/2004	594	600	274,777	291,879		22,638
11/09/2004	0	0	274,777	291,879		23,051
12/09/2004	0	0	274,777	291,879		23,192
13/09/2004	895	897	275,672	292,776		22,486
14/09/2004	474	475	276,146	293,251		23,281
15/09/2004	503	509	276,649	293,760		23,478
16/09/2004	560	564	277,209	294,324		23,779
17/09/2004	674	677	277,883	295,001		23,690
18/09/2004	196	196	278,079	295,197		23,685
19/09/2004	0	0	278,079	295,197		23,695
20/09/2004	290	292	278,369	295,489		24,241
21/09/2004	545	550	278,914	296,039		24,637
22/09/2004	621	627	279,535	296,666		24,884
23/09/2004	475	476	280,010	297,142		25,168
24/09/2004	420	422	280,430	297,564		25,462
25/09/2004	226	226	280,656	297,790		25,291
26/09/2004	0	0	280,656	297,790		25,350
27/09/2004	342	345	280,998	298,135		25,419
28/09/2004	523	525	281,521	298,660		25,749
29/09/2004	316	317	281,837	298,977		25,950
30/09/2004	479	481	282,316	299,458	11,965	26,209
01/10/2004	587	618	282,903	300,076		26,027
02/10/2004	255	255	283,158	300,331		25,787
03/10/2004	387	387	283,545	300,718		25,413
04/10/2004	154	155	283,699	300,873		25,480
05/10/2004	159	162	283,858	301,035		25,661
06/10/2004	563	573	284,421	301,608		26,325
07/10/2004	654	657	285,075	302,265		26,235
08/10/2004	1,275	1,281	286,350	303,546		26,008
09/10/2004	499	499	286,849	304,045		25,591
10/10/2004	0	0	286,849	304,045		25,594
11/10/2004	352	357	287,201	304,402		25,446
12/10/2004	722	724	287,923	305,126		25,418
13/10/2004	992	1,000	288,915	306,126		25,098
14/10/2004	901	903	289,816	307,029		24,596
15/10/2004	913	916	290,729	307,945		24,428
16/10/2004	447	447	291,176	308,392		23,992
17/10/2004	0	0	291,176	308,392		24,016
18/10/2004	314	318	291,490	308,710		24,239
19/10/2004	902	907	292,392	309,617		23,888
20/10/2004	776	780	293,168	310,397		23,661
21/10/2004	1,126	1,127	294,294	311,524		23,274
22/10/2004	963	963	295,257	312,487		22,884
23/10/2004	663	663	295,920	313,150		22,193
24/10/2004	0	0	295,920	313,150		22,325
25/10/2004	355	357	296,275	313,507		22,387
26/10/2004	815	818	297,090	314,325		22,457
27/10/2004	812	816	297,902	315,141		22,060
28/10/2004	724	724	298,626	315,865		21,942
29/10/2004	894	897	299,520	316,762		21,510
30/10/2004	430	430	299,950	317,192		21,217
31/10/2004	0	0	299,950	317,192	17,634	21,247
01/11/2004	366	389	300,316	317,581		21,392
02/11/2004	822	825	301,138	318,406		21,482
03/11/2004	606	610	301,744	319,016		21,470
04/11/2004	694	698	302,438	319,714		21,266
05/11/2004	866	871	303,304	320,585		21,346
06/11/2004	486	486	303,790	321,071		21,195
07/11/2004	0	0	303,790	321,071		21,423
08/11/2004	427	431	304,217	321,502		21,417
09/11/2004	648	649	304,865	322,151		21,642
10/11/2004	841	845	305,706	322,996		21,549

11/11/2004	898	901	306,604	323,897			20,928
12/11/2004	794	799	307,398	324,696			20,726
13/11/2004	339	339	307,737	325,035			20,369
14/11/2004	0	0	307,737	325,035			20,410
15/11/2004	336	341	308,073	325,376			20,363
16/11/2004	414	422	308,487	325,798			20,701
17/11/2004	1,189	1,189	309,676	326,987			20,310
18/11/2004	701	701	310,377	327,688			19,876
19/11/2004	794	805	311,171	328,493			19,689
20/11/2004	478	478	311,649	328,971			19,300
21/11/2004	0	0	311,649	328,971			19,360
22/11/2004	284	290	311,933	329,261			19,478
23/11/2004	706	710	312,639	329,971			19,644
24/11/2004	854	858	313,493	330,829			19,096
25/11/2004	714	714	314,207	331,543			18,910
26/11/2004	876	877	315,083	332,420			18,706
27/11/2004	388	388	315,471	332,808			18,398
28/11/2004	0	0	315,471	332,808			18,444
29/11/2004	312	315	315,783	333,123			18,438
30/11/2004	829	830	316,612	333,953	16,662	16,761	18,129
01/12/2004	683	696	317,295	334,649			17,913
02/12/2004	731	733	318,026	335,382			18,026
03/12/2004	690	690	318,716	336,072			18,146
04/12/2004	386	386	319,102	336,458			17,737
05/12/2004	0	0	319,102	336,458			17,800
06/12/2004	399	402	319,501	336,860			17,968
07/12/2004	701	708	320,202	337,568			18,073
08/12/2004	769	774	320,971	338,342			17,799
09/12/2004	580	580	321,551	338,922			18,057
10/12/2004	518	521	322,069	339,443			18,113
11/12/2004	308	308	322,377	339,751			17,844
12/12/2004	0	0	322,377	339,751			18,081
13/12/2004	387	387	322,764	340,138			17,968
14/12/2004	730	730	323,494	340,868			17,909
15/12/2004	689	694	324,183	341,562			17,788
16/12/2004	982	985	325,165	342,547			17,790
17/12/2004	960	962	326,125	343,509			17,499
18/12/2004	0	0	326,125	343,509			17,510
19/12/2004	0	0	326,125	343,509			17,510
20/12/2004	725	753	326,850	344,262			17,182
21/12/2004	1,042	1,046	327,892	345,308			17,284
22/12/2004	851	853	328,743	346,161			17,112
23/12/2004	607	607	329,350	346,768			17,134
24/12/2004	668	668	330,018	347,436			17,036
25/12/2004	0	0	330,018	347,436			17,060
26/12/2004	0	0	330,018	347,436			17,166
27/12/2004	59	59	330,077	347,495			17,108
28/12/2004	0	0	330,077	347,495			17,132
29/12/2004	280	283	330,357	347,778			17,090
30/12/2004	445	448	330,802	348,226			17,882
31/12/2004	311	319	331,113	348,545	14,501	14,592	18,059
01/01/2005	0	2	331,113	348,547			18,238
02/01/2005	2	68	331,115	348,615			18,316
03/01/2005	65	65	331,180	348,680			18,259
04/01/2005	259	316	331,439	348,996			18,351
05/01/2005	370	374	331,809	349,370			18,953
06/01/2005	410	417	332,219	349,787			19,312
07/01/2005	428	433	332,647	350,220			19,334
08/01/2005	303	303	332,950	350,523			18,977
09/01/2005	0	0	332,950	350,523			19,494
10/01/2005	240	245	333,190	350,768			19,470
11/01/2005	643	644	333,833	351,412			19,494
12/01/2005	838	843	334,671	352,255			19,368

13/01/2005	897	902	335,568	353,157		18,750
14/01/2005	844	848	336,412	354,005		18,209
15/01/2005	330	331	336,742	354,336		18,124
16/01/2005	0	0	336,742	354,336		18,318
17/01/2005	298	301	337,040	354,637		18,313
18/01/2005	699	701	337,739	355,338		17,990
19/01/2005	749	752	338,488	356,090		17,775
20/01/2005	660	660	339,148	356,750		17,480
21/01/2005	764	764	339,912	357,514		17,208
22/01/2005	251	251	340,163	357,765		17,166
23/01/2005	0	0	340,163	357,765		17,514
24/01/2005	360	360	340,523	358,125		17,837
25/01/2005	775	777	341,298	358,902		17,468
26/01/2005	103	104	341,401	359,006		17,401
27/01/2005	674	675	342,075	359,681		17,363
28/01/2005	725	729	342,800	360,410		16,889
29/01/2005	347	347	343,147	360,757		16,729
30/01/2005	0	0	343,147	360,757		16,994
31/01/2005	337	338	343,484	361,095	12,371	12,550
01/02/2005	958	965	344,442	362,060		16,331
02/02/2005	699	706	345,141	362,766		16,624
03/02/2005	532	535	345,673	363,301		16,771
04/02/2005	583	584	346,256	363,885		16,897
05/02/2005	398	398	346,654	364,283		16,439
06/02/2005	0	0	346,654	364,283		16,477
07/02/2005	335	336	346,989	364,619		16,437
08/02/2005	789	790	347,778	365,409		16,264
09/02/2005	567	571	348,345	365,980		16,277
10/02/2005	640	647	348,985	366,627		16,012
11/02/2005	833	836	349,818	367,463		15,511
12/02/2005	354	356	350,172	367,819		15,102
13/02/2005	0	0	350,172	367,819		15,170
14/02/2005	401	402	350,573	368,221		15,428
15/02/2005	632	634	351,205	368,855		15,395
16/02/2005	732	734	351,937	369,589		15,166
17/02/2005	674	676	352,611	370,265		15,228
18/02/2005	658	658	353,269	370,923		15,094
19/02/2005	385	385	353,654	371,308		14,724
20/02/2005	0	0	353,654	371,308		14,926
21/02/2005	330	330	353,984	371,638		14,865
22/02/2005	783	786	354,767	372,424		14,728
23/02/2005	820	824	355,587	373,248		14,337
24/02/2005	620	624	356,207	373,872		14,313
25/02/2005	599	599	356,806	374,471		14,178
26/02/2005	267	267	357,073	374,738		14,199
27/02/2005	0	0	357,073	374,738		14,340
28/02/2005	280	281	357,353	375,019	13,869	13,924
01/03/2005	555	568	357,908	375,587		14,177
02/03/2005	540	544	358,448	376,131		14,480
03/03/2005	448	448	358,896	376,579		14,624
04/03/2005	798	802	359,694	377,381		14,583
05/03/2005	186	186	359,880	377,567		14,450
06/03/2005	0	0	359,880	377,567		14,471
07/03/2005	327	334	360,207	377,901		14,530
08/03/2005	571	587	360,778	378,488		14,447
09/03/2005	390	391	361,168	378,879		14,699
10/03/2005	477	477	361,645	379,356		14,690
11/03/2005	796	802	362,441	380,158		14,319
12/03/2005	208	208	362,649	380,366		14,195
13/03/2005	0	0	362,649	380,366		14,303
14/03/2005	256	270	362,905	380,636		14,271
15/03/2005	566	567	363,471	381,203		14,287
16/03/2005	509	510	363,980	381,713		14,389

17/03/2005	695	700	364,675	382,413		14,232
18/03/2005	795	797	365,470	383,210		14,020
19/03/2005	461	461	365,931	383,671		13,768
20/03/2005	0	0	365,931	383,671		13,897
21/03/2005	286	287	366,217	383,958		13,830
22/03/2005	567	572	366,784	384,530		13,815
23/03/2005	634	636	367,418	385,166		13,815
24/03/2005	525	527	367,943	385,693		13,783
25/03/2005	0	0	367,943	385,693		13,798
26/03/2005	0	0	367,943	385,693		13,799
27/03/2005	58	58	368,001	385,751		13,739
28/03/2005	0	0	368,001	385,751		14,190
29/03/2005	628	630	368,629	386,381		13,732
30/03/2005	471	474	369,100	386,855		13,715
31/03/2005	542	542	369,642	387,397	12,289	12,378
01/04/2005	498	507	370,140	387,904		13,823
02/04/2005	170	170	370,310	388,074		13,680
03/04/2005	0	0	370,310	388,074		13,680
04/04/2005	150	151	370,460	388,225		14,075
05/04/2005	583	606	371,043	388,831		13,719
06/04/2005	431	434	371,474	389,265		13,565
07/04/2005	589	589	372,063	389,854		13,885
08/04/2005	640	643	372,703	390,497		14,273
09/04/2005	351	351	373,054	390,848		14,248
10/04/2005	0	0	373,054	390,848		14,325
11/04/2005	332	334	373,386	391,182		14,367
12/04/2005	599	602	373,985	391,784		14,071
13/04/2005	563	567	374,548	392,351		14,277
14/04/2005	524	525	375,072	392,876		14,380
15/04/2005	645	647	375,717	393,523		14,544
16/04/2005	303	303	376,020	393,826		14,271
17/04/2005	0	0	376,020	393,826		14,409
18/04/2005	237	243	376,257	394,069		14,525
19/04/2005	616	616	376,873	394,685		14,420
20/04/2005	539	541	377,412	395,226		14,262
21/04/2005	559	559	377,971	395,785		14,904
22/04/2005	735	735	378,706	396,520		15,159
23/04/2005	309	309	379,015	396,829		14,930
24/04/2005	0	0	379,015	396,829		15,037
25/04/2005	79	79	379,094	396,908		14,993
26/04/2005	289	291	379,383	397,199		15,113
27/04/2005	852	856	380,235	398,055		14,926
28/04/2005	277	278	380,512	398,333		15,532
29/04/2005	741	766	381,253	399,099		15,421
30/04/2005	252	252	381,505	399,351	11,863	11,954
01/05/2005	0	0	381,505	399,351		15,177
02/05/2005	505	623	382,010	399,974		15,369
03/05/2005	499	558	382,509	400,532		15,442
04/05/2005	559	559	383,068	401,091		15,562
05/05/2005	431	435	383,499	401,526		15,821
06/05/2005	582	585	384,081	402,111		16,148
07/05/2005	189	189	384,270	402,300		16,037
08/05/2005	0	0	384,270	402,300		16,138
09/05/2005	272	273	384,542	402,573		16,411
10/05/2005	632	634	385,174	403,207		16,778
11/05/2005	609	610	385,783	403,817		16,596
12/05/2005	569	570	386,352	404,387		16,406
13/05/2005	839	839	387,191	405,226		16,274
14/05/2005	320	320	387,511	405,546		16,174
15/05/2005	0	0	387,511	405,546		16,323
16/05/2005	327	331	387,838	405,877		16,450
17/05/2005	808	809	388,646	406,686		16,347
18/05/2005	710	715	389,356	407,401		16,183

19/05/2005	570	575	389,926	407,976		16,433
20/05/2005	663	665	390,589	408,641		16,206
21/05/2005	453	453	391,042	409,094		15,768
22/05/2005	0	0	391,042	409,094		15,872
23/05/2005	295	296	391,337	409,390		16,121
24/05/2005	746	749	392,083	410,139		16,779
25/05/2005	758	760	392,841	410,899		16,542
26/05/2005	658	662	393,499	411,561		16,601
27/05/2005	460	462	393,959	412,023		17,119
28/05/2005	158	158	394,117	412,181		16,939
29/05/2005	0	0	394,117	412,181		17,075
30/05/2005	374	374	394,491	412,555		17,362
31/05/2005	614	615	395,105	413,170	13,600	17,567
01/06/2005	518	522	395,623	413,692		17,697
02/06/2005	521	524	396,144	414,216		17,614
03/06/2005	513	514	396,657	414,730		18,029
04/06/2005	106	106	396,763	414,836		17,959
05/06/2005	0	0	396,763	414,836		18,137
06/06/2005	378	378	397,141	415,214		18,176
07/06/2005	628	632	397,769	415,846		18,434
08/06/2005	733	737	398,502	416,583		19,036
09/06/2005	655	658	399,157	417,241		18,924
10/06/2005	872	875	400,029	418,116		18,752
11/06/2005	0	0	400,029	418,116		18,730
12/06/2005	0	0	400,029	418,116		18,876
13/06/2005	39	39	400,068	418,155		18,872
14/06/2005	414	422	400,482	418,577		18,712
15/06/2005	769	773	401,251	419,350		18,841
16/06/2005	208	211	401,459	419,561		19,098
17/06/2005	428	431	401,887	419,992		19,317
18/06/2005	957	957	402,844	420,949		18,522
19/06/2005	0	0	402,844	420,949		18,754
20/06/2005	268	268	403,112	421,217		19,271
21/06/2005	621	622	403,733	421,839		19,106
22/06/2005	847	848	404,580	422,687		18,796
23/06/2005	679	682	405,259	423,369		18,482
24/06/2005	695	697	405,954	424,066		18,408
25/06/2005	290	290	406,244	424,356		18,061
26/06/2005	0	0	406,244	424,356		18,061
27/06/2005	454	458	406,698	424,814		20,941
28/06/2005	473	479	407,171	425,293		21,346
29/06/2005	1,024	1029	408,195	426,322		21,497
30/06/2005	709	711	408,904	427,033	13,799	21,535
01/07/2005	660	981	409,564	428,014		21,553
02/07/2005	132	133	409,696	428,147		22,039
03/07/2005	0	2	409,696	428,149		22,254
04/07/2005	240	267	409,936	428,416		22,309
05/07/2005	580	588	410,516	429,004		22,725
06/07/2005	458	472	410,974	429,476		24,031
07/07/2005	840	875	411,814	430,351		23,973
08/07/2005	905	926	412,719	431,277		23,788
09/07/2005	311	311	413,030	431,588		23,631
10/07/2005	0	0	413,030	431,588		23,966
11/07/2005	306	315	413,336	431,903		24,167
12/07/2005	657	682	413,993	432,585		24,141
13/07/2005	1,036	1040	415,029	433,625		24,139
14/07/2005	629	638	415,658	434,263		24,133
15/07/2005	773	786	416,431	435,049		24,094
16/07/2005	471	471	416,902	435,520		24,165
17/07/2005	0	0	416,902	435,520		24,902
18/07/2005	554	564	417,456	436,084		24,766
19/07/2005	1,174	1178	418,630	437,262		24,482
20/07/2005	872	881	419,502	438,143		24,305

21/07/2005	702	709	420,204	438,852		24,142
22/07/2005	710	713	420,914	439,565		23,877
23/07/2005	0	0	420,914	439,565		24,158
24/07/2005	0	0	420,914	439,565		24,276
25/07/2005	815	821	421,729	440,386		24,304
26/07/2005	674	676	422,403	441,062		24,416
27/07/2005	801	803	423,204	441,865		24,291
28/07/2005	683	689	423,887	442,554		24,389
29/07/2005	779	782	424,666	443,336		24,308
30/07/2005	346	346	425,012	443,682		23,889
31/07/2005	0	0	425,012	443,682	16,108	23,889
01/08/2005	223	256	425,235	443,938		24,003
02/08/2005	587	589	425,822	444,527		24,014
03/08/2005	721	727	426,543	445,254		24,000
04/08/2005	493	499	427,036	445,753		24,591
05/08/2005	659	669	427,695	446,422		24,526
06/08/2005	325	325	428,020	446,747		24,209
07/08/2005	0	0	428,020	446,747		24,273
08/08/2005	357	357	428,377	447,104		24,574
09/08/2005	766	776	429,143	447,880		24,546
10/08/2005	638	645	429,781	448,525		24,616
11/08/2005	834	841	430,615	449,366		24,578
12/08/2005	1,141	1,143	431,756	450,509		24,216
13/08/2005	460	460	432,216	450,969		23,953
14/08/2005	0	0	432,216	450,969		24,208
15/08/2005	273	277	432,489	451,246		24,209
16/08/2005	1,192	1,196	433,681	452,442		23,698
17/08/2005	1,294	1,298	434,975	453,740		22,973
18/08/2005	1,006	1,011	435,981	454,751		22,338
19/08/2005	786	786	436,767	455,537		22,050
20/08/2005	588	588	437,355	456,125		21,540
21/08/2005	0	0	437,355	456,125		21,648
22/08/2005	434	438	437,789	456,563		21,630
23/08/2005	706	709	438,495	457,272		21,612
24/08/2005	761	771	439,256	458,043		21,547
25/08/2005	939	942	440,195	458,985		21,214
26/08/2005	1,058	1,059	441,253	460,044		20,756
27/08/2005	480	480	441,733	460,524		20,277
28/08/2005	0	0	441,733	460,524		20,586
29/08/2005	361	365	442,094	460,889		20,735
30/08/2005	1,108	1,111	443,202	462,000		20,341
31/08/2005	1,019	1,024	444,221	463,024	19,209	20,020
01/09/2005	790	810	445,011	463,834		19,839
02/09/2005	1,050	1,058	446,061	464,892		19,388
03/09/2005	467	467	446,528	465,359		18,976
04/09/2005	0	0	446,528	465,359		19,170
05/09/2005	477	479	447,005	465,838		19,294
06/09/2005	933	938	447,938	466,776		18,828
07/09/2005	1,176	1,179	449,114	467,955		18,385
08/09/2005	712	718	449,826	468,673		18,366
09/09/2005	772	775	450,598	469,448		17,969
10/09/2005	300	300	450,898	469,748		17,968
11/09/2005	0	0	450,898	469,748		18,846
12/09/2005	367	368	451,265	470,116		19,093
13/09/2005	809	812	452,074	470,928		19,027
14/09/2005	883	886	452,957	471,814		18,925
15/09/2005	693	696	453,650	472,510		18,871
16/09/2005	814	816	454,464	473,326		18,826
17/09/2005	279	279	454,743	473,605		18,923
18/09/2005	0	0	454,743	473,605		19,196
19/09/2005	624	625	455,367	474,230		19,124
20/09/2005	735	736	456,102	474,966		19,330
21/09/2005	1,072	1,073	457,174	476,039		19,278

22/09/2005	783	788	457,957	476,827		19,005
23/09/2005	1,026	1,028	458,983	477,855		18,689
24/09/2005	448	448	459,431	478,303		18,327
25/09/2005	0	0	459,431	478,303		18,411
26/09/2005	373	375	459,804	478,678		18,388
27/09/2005	1,003	1,006	460,807	479,684		18,786
28/09/2005	638	642	461,445	480,326		18,995
29/09/2005	404	405	461,849	480,731		19,382
30/09/2005	641	642	462,490	481,373	18,269	19,758
01/10/2005	313	313	462,803	481,686		19,632
02/10/2005	0	0	462,803	481,686		19,763
03/10/2005	287	316	463,090	482,002		19,972
04/10/2005	505	514	463,595	482,516		20,593
05/10/2005	503	515	464,098	483,031		20,672
06/10/2005	655	659	464,753	483,690		21,083
07/10/2005	881	885	465,634	484,575		21,263
08/10/2005	303	303	465,937	484,878		21,037
09/10/2005	0	0	465,937	484,878		21,272
10/10/2005	376	409	466,313	485,287		21,581
11/10/2005	1,021	1,035	467,334	486,322		21,508
12/10/2005	1,206	1,208	468,540	487,530		20,985
13/10/2005	1,169	1,173	469,709	488,703		20,465
14/10/2005	832	833	470,541	489,536		19,884
15/10/2005	210	210	470,751	489,746		19,736
16/10/2005	0	0	470,751	489,746		20,018
17/10/2005	621	626	471,372	490,372		20,444
18/10/2005	1,003	1,015	472,375	491,387		20,358
19/10/2005	812	816	473,187	492,203		20,316
20/10/2005	689	694	473,876	492,897		20,349
21/10/2005	810	811	474,686	493,708		20,029
22/10/2005	257	257	474,943	493,965		20,092
23/10/2005	0	0	474,943	493,965		20,302
24/10/2005	493	496	475,436	494,461		20,700
25/10/2005	1,228	1,230	476,664	495,691		20,442
26/10/2005	832	837	477,496	496,528		20,264
27/10/2005	729	736	478,225	497,264		19,987
28/10/2005	850	853	479,075	498,117		19,977
29/10/2005	191	191	479,266	498,308		19,697
30/10/2005	0	0	479,266	498,308		19,697
31/10/2005	507	510	479,773	498,818	17,283	20,026
01/11/2005	796	880	480,569	499,698		20,131
02/11/2005	796	805	481,365	500,503		20,501
03/11/2005	746	750	482,111	501,253		20,705
04/11/2005	716	717	482,827	501,970		20,908
05/11/2005	230	230	483,057	502,200		20,893
06/11/2005	0	0	483,057	502,200		21,134
07/11/2005	574	578	483,631	502,778		21,436
08/11/2005	695	697	484,326	503,475		21,527
09/11/2005	699	708	485,025	504,183		22,385
10/11/2005	576	576	485,601	504,759		22,335
11/11/2005	803	804	486,404	505,563		22,735
12/11/2005	211	211	486,615	505,774		22,705
13/11/2005	0	0	486,615	505,774		22,937
14/11/2005	377	382	486,992	506,156		23,088
15/11/2005	957	960	487,949	507,116		22,989
16/11/2005	1,330	1,339	489,279	508,455		22,908
17/11/2005	847	852	490,126	509,307		23,079
18/11/2005	732	734	490,858	510,041		22,807
19/11/2005	368	368	491,226	510,409		22,761
20/11/2005	0	0	491,226	510,409		23,263
21/11/2005	387	389	491,613	510,798		23,546
22/11/2005	1,625	1,670	493,238	512,468		23,069
23/11/2005	1,213	1,216	494,451	513,684		22,544

24/11/2005	932	934	495,383	514,618			22,852
25/11/2005	856	860	496,239	515,478			23,101
26/11/2005	0	0	496,239	515,478			23,545
27/11/2005	0	0	496,239	515,478			23,925
28/11/2005	996	996	497,235	516,474			23,780
29/11/2005	1,165	1,188	498,400	517,662			23,574
30/11/2005	819	820	499,219	518,482	19,446	19,664	23,931
01/12/2005	796	811	500,015	519,293			24,283
02/12/2005	789	804	500,804	520,097			24,353
03/12/2005	359	359	501,163	520,456			24,130
04/12/2005	0	0	501,163	520,456			24,534
05/12/2005	597	634	501,760	521,090			24,997
06/12/2005	1,156	1,160	502,916	522,250			25,041
07/12/2005	1,006	1,010	503,922	523,260			25,236
08/12/2005	807	818	504,729	524,078			25,185
09/12/2005	760	763	505,489	524,841			25,243
10/12/2005	356	356	505,845	525,197			25,456
11/12/2005	0	0	505,845	525,197			25,702
12/12/2005	814	820	506,659	526,017			25,684
13/12/2005	854	864	507,513	526,881			26,331
14/12/2005	1,087	1,089	508,600	527,970			26,475
15/12/2005	1,062	1,070	509,662	529,040			27,793
16/12/2005	1,008	1,011	510,670	530,051			28,067
17/12/2005	425	425	511,095	530,476			27,980
18/12/2005	0	0	511,095	530,476			27,999
19/12/2005	826	831	511,921	531,307			28,555
20/12/2005	1,223	1,225	513,144	532,532			28,651
21/12/2005	967	968	514,111	533,500			28,427
22/12/2005	1,099	1,101	515,210	534,601			28,020
23/12/2005	1,393	1,395	516,603	535,996			27,743
24/12/2005	445	445	517,048	536,441			27,670
25/12/2005	0	0	517,048	536,441			27,859
26/12/2005	342	342	517,390	536,783			27,536
27/12/2005	55	55	517,445	536,838			27,640
28/12/2005	776	779	518,221	537,617			27,539
29/12/2005	841	844	519,062	538,461			28,648
30/12/2005	415	415	519,477	538,876			28,964
31/12/2005	94	94	519,571	538,970	20,352	20,488	29,436

Graph				Graph	
Sum	Sum	Month End	Month End	Month End	
M42		M31			
Date	Small Monthly Transfer Total	Monthly Transfer Total (Large & Small)	Total Small transferred consumers	Total transferred consumers non-wholesale, NSW	Month End: Small Transfers in Progress
Sep-2003	9,450	10,198	137,902	152,786	13,361
Oct-2003	11,144	11,244	149,046	164,030	13,621
Nov-2003	10,517	10,587	159,563	174,617	11,963
Dec-2003	9,235	9,459	168,798	184,076	14,314
Jan-2004	11,925	12,116	180,723	196,192	13,981
Feb-2004	10,980	11,089	191,703	207,281	14,573
Mar-2004	15,218	15,305	206,921	222,586	16,801
Apr-2004	12,194	12,300	219,115	234,886	19,115
May-2004	14,615	14,886	233,730	249,772	17,743
Jun-2004	14,095	14,160	247,825	263,932	12,777
Jul-2004	11,638	12,377	259,463	276,309	14,430
Aug-2004	10,888	11,006	270,351	287,315	20,821
Sep-2004	11,965	12,143	282,316	299,458	26,209
Oct-2004	17,634	17,734	299,950	317,192	21,247
Nov-2004	16,662	16,761	316,612	333,953	18,129
Dec-2004	14,501	14,592	331,113	348,545	18,059

Jan-2005	12,371	12,550	343,484	361,095	16,979
Feb-2005	13,869	13,924	357,353	375,019	14,462
Mar-2005	12,289	12,378	369,642	387,397	13,933
Apr-2005	11,863	11,954	381,505	399,351	15,129
May-2005	13,600	13,819	395,105	413,170	17,567
Jun-2005	13,799	13,863	408,904	427,033	21,535
Jul-2005	16,108	16,649	425,012	443,682	23,889
Aug-2005	19,209	19,342	444,221	463,024	20,020
Sep-2005	18,269	18,349	462,490	481,373	19,758
Oct-2005	17,283	17,445	479,773	498,818	20,026
Nov-2005	19,446	19,664	499,219	518,482	23,931
Dec-2005	20,352	20,488	519,571	538,970	29,436