

GAS MMS DATA MODEL UPGRADE REPORT

AEMO Gas Data Model v2.0 Oracle

PREPARED BY: IMT

DATE: 28/09/2018

Table of Contents

1	Description of model AEMO Gas Data Model v2.0 Oracle	1
2	Notes	2
2.1	Visibility	2
3	Package: GAS_BB	3
3.1	List of tables	3
3.2	Diagram: Entities: Gas Bulletin Board	5
3.3	Table: GAS_CAPACITY_TYPE	6
3.4	Table: GAS_CONNECTIONPOINT_CAPACITY	7
3.5	Table: GAS_DAILY_FLOW_ACTUAL	8
3.6	Table: GAS_DAILY_STORAGE_ACTUAL	9
3.7	Table: GAS_FACILITY	10
3.8	Table: GAS_FACILITY_DETAIL	11
3.9	Table: GAS_FACILITY_DETAIL_CAPACITY	12
3.10	Table: GAS_FACILITY_NODE	13
3.11	Table: GAS_FACILITY_NODE_CONNECTION	14
3.12	Table: GAS_FACILITY_NODE_TRK	15
3.13	Table: GAS_FACILITY_OPSTATE	16
3.14	Table: GAS_FACILITY_OWNER	17
3.15	Table: GAS_FACILITY_OWNER_TRK	18
3.16	Table: GAS_FACILITY_SUMMARY	19
3.17	Table: GAS_FACILITY_TYPE	20
3.18	Table: GAS_LINEPACK_ADEQUACY	21
3.19	Table: GAS_LOCATION	22
3.20	Table: GAS_LOCATION_NODE	23
3.21	Table: GAS_LOCATION_NODE_TRK	24
3.22	Table: GAS_LOCATION_OPSTATE	25
3.23	Table: GAS_MEDIUM_TERM_CAP_OUTLOOK	26
3.24	Table: GAS_NAMEPLATE_RATING	27
3.25	Table: GAS_NODE	28
3.26	Table: GAS_NODE_OPSTATE	29
3.27	Table: GAS_NOMINATIONS_FORECAST	30
3.28	Table: GAS_NOMINATIONS_FORECAST_AGG	31
3.29	Table: GAS_PARTICIPANT	32
3.30	Table: GAS_SEC_CAP_ORDERS	33
3.31	Table: GAS_SEC_CAP_ORDERS_TRK	34

3.32	Table: GAS_SEC_CAP_TRADES	35
3.33	Table: GAS_SEC_CAP_TRADES_TRK	37
3.34	Table: GAS_SHORT_TERM_CAP_OUTLOOK	38
3.35	Table: GAS_STATE	39
3.36	Table: GAS_UNCONTRACTED_CAP_OUTLOOK	40

Disclaimer

This document is made available to you on the following basis:

(a) Purpose - This document is provided by the Australian Energy Market Operator Limited (AEMO) to you for information purposes only. You are not permitted to commercialise it or any information contained in it.

(b) No Reliance or warranty - This document may be subsequently amended. AEMO does not warrant or represent that the data or information in this document is accurate, reliable, complete or current or that it is suitable for particular purposes. You should verify and check the accuracy, completeness, reliability and suitability of this document for any use to which you intend to put it and seek independent expert advice before using it, or any information contained in it.

(c) Limitation of liability - To the extent permitted by law, AEMO and its advisers, consultants and other contributors to this document (or their respective associated companies, businesses, partners, directors, officers or employees) shall not be liable for any errors, omissions, defects or misrepresentations in the information contained in this document, or for any loss or damage suffered by persons who use or rely on such information (including by reason of negligence, negligent misstatement or otherwise). If any law prohibits the exclusion of such liability, AEMO's liability is limited, at AEMO's option, to the re-supply of the information, provided that this limitation is permitted by law and is fair and reasonable.

© 2010 - All rights reserved.

1 Description of model AEMO Gas Data Model v2.0 Oracle

This page is intentionally blank

2 Notes

Each table description has a Note providing some information relevant to the table.

2.1 Visibility

Visibility refers to the nature of confidentiality of data in the table. Each table has one of the following entries, each described here.

Private: meaning the data is confidential to the Participant.

Public: meaning all Participants have access to the data.

Private, Public Next-Day: meaning the data is confidential until available for public release at beginning of next day (i.e. 4am).

Private & Public: meaning some items are private and some are public.

3 Package: GAS_BB

Name GAS_BB

Comment

3.1 List of tables

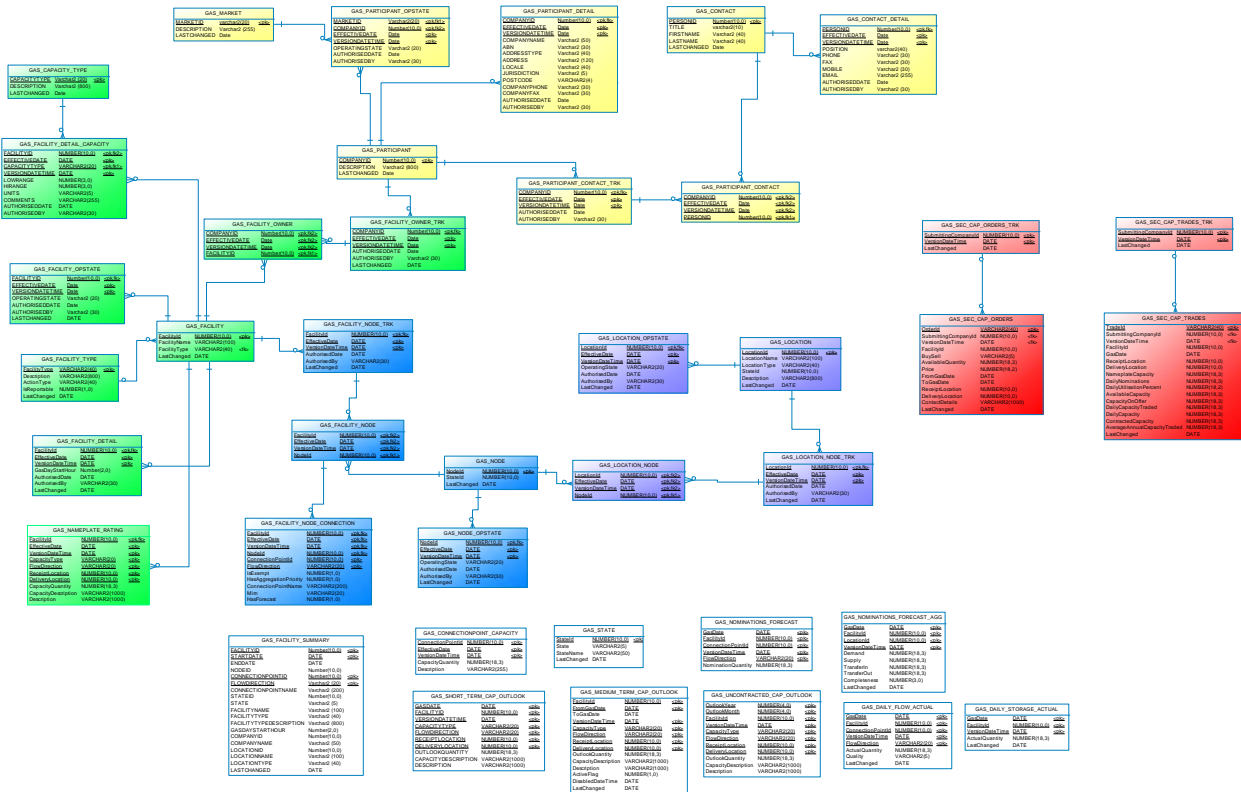
Name	Comment
GAS_CAPACITY_TYPE	Capacity Type - The type of capacity detailed. Valid entries are: STORAGE, MDQ
GAS_CONNECTIONPOINT_CAPACITY	Provide details of the gate station capacity on a particular day.
GAS_DAILY_FLOW_ACTUAL	Provides on each gas day D, the BB facility operator's daily gas flow data for injections and withdrawals at each connection point for gas day D-1.
GAS_DAILY_STORAGE_ACTUAL	Provide on each gas day D, the actual quantity of natural gas held in each storage facility at the end of the gas day D-1.
GAS_FACILITY	Provides details of all facilities
GAS_FACILITY_DETAIL	The details of all gas plant facilities over time
GAS_FACILITY_DETAIL_CAPACITY	The standing details on capacity of all gas plant facilities over time
GAS_FACILITY_NODE	Identifies the set of nodes linked to facilities. A facility can have any number of nodes.
GAS_FACILITY_NODE_CONNECTION	Identifies the set of connections associated with a node. There are up to four. Up to two for each facility/node combination. For example, a pipe might be connected to a store via a node. Two of the connections in the node are connected to the pipe and two to the store. Each pair of connections is a delivery or a receipt type of connection.
GAS_FACILITY_NODE_TRK	A facility tracking record. A parent record relating to sets of child nodes linked to a facility. The set can be found in GAS_FACILITY_NODE.
GAS_FACILITY_OPSTATE	The operating status of all facilities over time
GAS_FACILITY_OWNER	The detail of facility ownership over time
GAS_FACILITY_OWNER_TRACK	The tracking of Facility ownership over time
GAS_FACILITY_SUMMARY	A summary of gas FACILITY, capacity and ownership through time
GAS_FACILITY_TYPE	A lookup table identifying the type of facilities stored in AEMO's GBB system
GAS_LINEPACK_ADEQUACY	The linepack adequacy (flag) for each of the (non-exempt) BB pipelines
GAS_LOCATION	Lists all production and demand locations within the Bulletin Board system.
GAS_LOCATION_NODE	Provides a list of nodes within a location.
GAS_LOCATION_NODE_TRK	Provides a record of node tracking.
GAS_LOCATION_OPSTATE	The operating status of all locations over time.
GAS_MEDIUM_TERM_CAPACITY_OUTLOOK	Provide the details of activities that may affect the daily capacity of the facility over the next 12 months.
GAS_NAMEPLATE_RATING	Provide the nameplate rating of each facility or information about any planned permanent capacity reduction or expansion due to modification of the facility.
GAS_NODE	A container for up to four connections
GAS_NODE_OPSTATE	The operating status of all facility nodes over time
GAS_NOMINATIONS_FORECAST	For BB pipelines forming part of a Declared Transmission System, provide on each gas day the aggregated scheduled injections and

	<p>aggregated scheduled withdrawals at each controllable system point for gas day D to D+2.</p> <p>For all other BB facility operators, provide on each gas day D the aggregated nominated and forecast injections and aggregated nominated and forecast withdrawals for gas day D to D+6.</p>
GAS_NOMINATIONS_FORECAST_AGG	Provides the aggregate of forecast and nominations by location.
GAS_PARTICIPANT	The list of all registered organisations i.e the BB Participants of the Bulletin Board
GAS_SEC_CAP_ORDERS	Information related to the bids and offers of secondary pipeline capacity, which is derived from a secondary pipeline capacity trading platform
GAS_SEC_CAP_ORDERS_TRACK	Bids and offer tracking information of secondary pipeline capacity
GAS_SEC_CAP_TRADES	Information related to summary trading data, which is derived from a secondary pipeline capacity trading platform.
GAS_SEC_CAP_TRADES_TRACK	Information related to summary trading data, which is derived from a secondary pipeline capacity trading platform.
GAS_SHORT_TERM_CAPACITY_OUTLOOK	Provides on each gas day D, the BB facility operator's good faith estimate of the daily capacity of the BB Facility for gas days D+1 to D+7.
GAS_STATE	List of states.
GAS_UNCONTRACTED_CAPACITY_OUTLOOK	Provide the uncontracted capacity of the facility over the next 12 months.

3.2 Diagram: Entities: Gas Bulletin Board

3.2.1 Card of diagram Entities: Gas Bulletin Board

<p>Name Code Comment</p>	<p>Entities: Gas Bulletin Board ENTITIES__GAS_BULLETIN_BOARD The Gas BB ERD is Colour Coded as an aid. The Yellow tables denote Participant Registration. The Green tables denote Participant - Facility ownership and Facility properties. The Purple tables denote Location details. The Blue tables denote Node and Node connection details</p>
----------------------------------	--



3.3 Table: GAS_CAPACITY_TYPE

Name GAS_CAPACITY_TYPE

Comment Capacity Type - The type of capacity detailed. Valid entries are: STORAGE, MDQ

3.3.1 Primary Key Columns

Name
CAPACITYTYPE

3.3.2 Content

Name	Data Type	Mandatory	Comment
CAPACITYTYPE	Varchar2 (20)	X	Capacity Type - The type of capacity being detailed. Valid entries are: STORAGE, MDQ
DESCRIPTION	Varchar2 (800)		Description of Capacity Type
LASTCHANGED	Date		Date and time record was last modified

3.4 Table: GAS_CONNECTIONPOINT_CAPACITY

Name GAS_CONNECTIONPOINT_CAPACITY

Comment Provide details of the gate station capacity on a particular day.

3.4.1 Notes

Name	Comment	Value
Visibility	Data in this table is:	Public

3.4.2 Primary Key Columns

Name
 ConnectionPointId
 EffectiveDate
 VersionDateTime

3.4.3 Content

Name	Data Type	Mandatory	Comment
ConnectionPointId	NUMBER(10,0)	X	Unique connection point identifier.
EffectiveDate	DATE	X	Effective date of the record
VersionDateTime	DATE	X	Version timestamp of the record
CapacityQuantity	NUMBER(18,3)		Quantity of available capacity in TJs and support just 3 decimal places during the defined period
Description	VARCHAR2(255)		Description for reasons or comments directly related to the quantity or change in Outlook quantity in relation to the Facility.

3.5 Table: GAS_DAILY_FLOW_ACTUAL

Name GAS_DAILY_FLOW_ACTUAL

Comment Provides on each gas day D, the BB facility operator's daily gas flow data for injections and withdrawals at each connection point for gas day D-1.

3.5.1 Primary Key Columns

Name
 ConnectionPointId
 FacilityId
 FlowDirection
 GasDate
 VersionDateTime

3.5.2 Content

Name	Data Type	Mandatory	Comment
GasDate	DATE	X	Date of gas day
FacilityId	NUMBER(10,0)	X	Unique Facility Identifier
ConnectionPointId	NUMBER(10,0)	X	Unique connection point identifier.
VersionDateTime	DATE	X	Version timestamp of the record
FlowDirection	VARCHAR2(20)	X	Direction of flow for the submission record. Must be one of 'RECEIPT' or 'DELIVERY'
ActualQuantity	NUMBER(18,3)		The actual flow quantity reported in TJ to the nearest gigajoule.
Quality	VARCHAR2(5)		Indicates whether meter data for the submission date is available
LastChanged	DATE		Date and time record was last modified

3.6 Table: GAS_DAILY_STORAGE_ACTUAL

<i>Name</i>	GAS_DAILY_STORAGE_ACTUAL
<i>Comment</i>	Provide on each gas day D, the actual quantity of natural gas held in each storage facility at the end of the gas day D-1.

3.6.1 Primary Key Columns

Name
 FacilityId
 GasDate
 VersionDateTime

3.6.2 Content

Name	Data Type	Mandatory	Comment
GasDate	DATE	X	Date of gas day
FacilityId	NUMBER(10,0)	X	Unique Facility Identifier
VersionDateTime	DATE	X	Version timestamp of the record
ActualQuantity	NUMBER(18,3)		The actual flow quantity reported in TJ to the nearest gigajoule.
LastChanged	DATE		Date and time record was last modified

3.7 Table: GAS_FACILITY

Name GAS_FACILITY
Comment Provides details of all facilities

3.7.1 Notes

Name Comment Value
 Visibility Data in this table is: Public

3.7.2 Primary Key Columns

Name
 FacilityId

3.7.3 Content

Name	Data Type	Mandatory	Comment
FacilityId	NUMBER(10,0)	X	Unique Facility Identifier
FacilityName	VARCHAR2(100)		Name of the Facility
FacilityType	VARCHAR2(40)		Describes type of Facility. Valid entries are: PIPE, PROD or STOR
LastChanged	DATE		Date and time record was last modified

3.8 Table: GAS_FACILITY_DETAIL

Name GAS_FACILITY_DETAIL
Comment The details of all gas plant facilities over time

3.8.1 Notes

Name Comment Value
 Visibility Data in this table is: Public

3.8.2 Primary Key Columns

Name
 EffectiveDate
 FacilityId
 VersionDateTime

3.8.3 Content

Name	Data Type	Mandatory	Comment
FacilityId	NUMBER(10,0)	X	Unique Facility Identifier
EffectiveDate	DATE	X	Effective date of the record
VersionDateTime	DATE	X	Version timestamp of the record
GasDayStartHour	Number(2,0)		Specifies the gas day start hour for this specific plant. Valid entries are 0 to 23.
AuthorisedDate	DATE		Date and time this operating state was authorised
AuthorisedBy	VARCHAR2(30)		User that authorised the change
LastChanged	DATE		Date and time record was last modified

3.9 Table: GAS_FACILITY_DETAIL_CAPACITY

Name GAS_FACILITY_DETAIL_CAPACITY
Comment The standing details on capacity of all gas plant facilities over time

3.9.1 Primary Key Columns

Name
 CAPACITYTYPE
 EFFECTIVEDATE
 FACILITYID
 VERSIONDATETIME

3.9.2 Content

Name	Data Type	Mandatory	Comment
FACILITYID	NUMBER(10,0)	X	Unique Facility identifier
EFFECTIVEDATE	DATE	X	Date capacity comes into effect
CAPACITYTYPE	VARCHAR2(20)	X	Capacity Type - Must be either STORAGE or MDQ.
VERSIONDATETIME	DATE	X	Version timestamp of the record.
LOWRANGE	NUMBER(3,0)		Percentage value used for (low) validation of capacity outlook
HIRANGE	NUMBER(3,0)		Percentage value used for (high) validation of capacity outlook
UNITS	VARCHAR2(5)		Unit of measurement. Only TJ is used
COMMENTS	VARCHAR2(255)		Free text description of record
AUTHORISEDDATE	DATE		Date and time this operating state was authorised
AUTHORISEDBY	VARCHAR2(30)		User which authorised the change

3.10 Table: GAS_FACILITY_NODE

<i>Name</i>	GAS_FACILITY_NODE
<i>Comment</i>	Identifies the set of nodes linked to facilities. A facility can have any number of nodes.

3.10.1 Primary Key Columns

Name
 EffectiveDate
 FacilityId
 NodeId
 VersionDateTime

3.10.2 Content

Name	Data Type	Mandatory	Comment
FacilityId	NUMBER(10,0)	X	Unique Facility Identifier
EffectiveDate	DATE	X	Effective date of the record
VersionDateTime	DATE	X	Version timestamp of the record
NodeId	NUMBER(10,0)	X	Unique Node Identifier

3.11 Table: GAS_FACILITY_NODE_CONNECTION

<i>Name</i>	GAS_FACILITY_NODE_CONNECTION
<i>Comment</i>	<p>Identifies the set of connections associated with a node. There are up to four. Up to two for each facility/node combination.</p> <p>For example, a pipe might be connected to a store via a node. Two of the connections in the node are connected to the pipe and two to the store. Each pair of connections is a delivery or a receipt type of connection.</p>

3.11.1 Primary Key Columns

Name
 ConnectionPointId
 EffectiveDate
 FacilityId
 FlowDirection
 NodeId
 VersionDateTime

3.11.2 Content

Name	Data Type	Mandatory	Comment
FacilityId	NUMBER(10,0)	X	Unique Facility Identifier
EffectiveDate	DATE	X	Effective date of the record
VersionDateTime	DATE	X	Version timestamp of the record
NodeId	NUMBER(10,0)	X	Unique Node Identifier
ConnectionPointId	NUMBER(10,0)	X	Unique connection point identifier.
FlowDirection	VARCHAR2(20)	X	Direction of flow for the submission record. Must be one of 'RECEIPT' or 'DELIVERY'
IsExempt	NUMBER(1,0)		Submissions are not required if this is set to 1.
HasAggregationPriority	NUMBER(1,0)		If 1, this will be used for aggregating.
ConnectionPointName	VARCHAR2(200)		Name of the Connection point
Mirn	VARCHAR2(20)		Meter Installation Registration Number – (MIRN). Unique identifier for the Victorian DTS delivery or supply point, used to retrieve the Daily Actual Flow and Nomination & Forecast from DWGM.
HasForecast	NUMBER(1,0)		Used to determine the MIRN required for Nomination and Forecast from DWGM.

3.12 Table: GAS_FACILITY_NODE_TRK

<i>Name</i>	GAS_FACILITY_NODE_TRK
<i>Comment</i>	A facility tracking record. A parent record relating to sets of child nodes linked to a facility. The set can be found in GAS_FACILITY_NODE.

3.12.1 Primary Key Columns

Name
 EffectiveDate
 FacilityId
 VersionDateTime

3.12.2 Content

Name	Data Type	Mandatory	Comment
FacilityId	NUMBER(10,0)	X	Unique Facility Identifier
EffectiveDate	DATE	X	Effective date of the record
VersionDateTime	DATE	X	Version timestamp of the record
AuthorisedDate	DATE		Any records without a date are ignored by AEMO systems.
AuthorisedBy	VARCHAR2(30)		User that authorised the change.
LastChanged	DATE		Date and time record was last modified

3.13 Table: GAS_FACILITY_OPSTATE

Name GAS_FACILITY_OPSTATE
Comment The operating status of all facilities over time

3.13.1 Notes

Name Comment Value
 Visibility Data in this table is: Public

3.13.2 Primary Key Columns

Name
 EFFECTIVEDATE
 FACILITYID
 VERSIONDATETIME

3.13.3 Content

Name	Data Type	Mandatory	Comment
FACILITYID	Number(10,0)	X	Unique Facility identifier
EFFECTIVEDATE	Date	X	Effective date for this operating state
VERSIONDATETIME	Date	X	Version date time for this operating state
OPERATINGSTATE	Varchar2 (20)		Operating status - active, inactive
AUTHORISEDDATE	Date		Date and time this operating state was authorised
AUTHORISEDBY	Varchar2 (30)		User which authorised the change
LASTCHANGED	DATE		Date and time record was last modified

3.14 Table: GAS_FACILITY_OWNER

Name GAS_FACILITY_OWNER
Comment The detail of facility ownership over time

3.14.1 Notes

Name Comment Value
 Visibility Data in this table is: Public

3.14.2 Primary Key Columns

Name
 COMPANYID
 EFFECTIVEDATE
 FACILITYID
 VERSIONDATETIME

3.14.3 Content

Name	Data Type	Mandatory	Comment
COMPANYID	Number(10,0)	X	Unique company identifier
EFFECTIVEDATE	Date	X	Effective date for this operating state
VERSIONDATETIME	Date	X	Version date time for this operating state
FACILITYID	Number(10,0)	X	Unique Facility identifier

3.15 Table: GAS_FACILITY_OWNER_TRK

Name GAS_FACILITY_OWNER_TRK
Comment The tracking of Facility ownership over time

3.15.1 Notes

Name Comment Value
 Visibility Data in this table is: Public

3.15.2 Primary Key Columns

Name
 COMPANYID
 EFFECTIVEDATE
 VERSIONDATETIME

3.15.3 Content

Name	Data Type	Mandatory	Comment
COMPANYID	Number(10,0)	X	Unique company identifier
EFFECTIVEDATE	Date	X	Effective date for this operating state
VERSIONDATETIME	Date	X	Version date time for this operating state
AUTHORISEDDATE	Date		Date and time this operating state was authorised
AUTHORISEDBY	Varchar2 (30)		User which authorised the change
LASTCHANGED	DATE		Date and time record was last modified

3.16 Table: GAS_FACILITY_SUMMARY

Name GAS_FACILITY_SUMMARY

Comment A summary of gas FACILITY, capacity and ownership through time

3.16.1 Notes

Name	Comment	Value
Visibility	Data in this table is:	Public

3.16.2 Primary Key Columns

Name
 CONNECTIONPOINTID
 FACILITYID
 FLOWDIRECTION
 STARTDATE

3.16.3 Content

Name	Data Type	Mandatory	Comment
FACILITYID	Number(10,0)	X	Unique Facility Identifier
STARTDATE	DATE	X	Effective date of the record
ENDDATE	DATE		End date of the record
NODEID	Number(10,0)		Unique Node Identifier
CONNECTIONPOINTID	Number(10,0)	X	Unique connection point identifier.
FLOWDIRECTION	Varchar2 (20)	X	Direction of flow for the submission record. Must be one of 'RECEIPT' or 'DELIVERY'
CONNECTIONPOINTNAME	Varchar2 (200)		Name of the Connection point
STATEID	Number(10,0)		Unique state identifier
STATE	Varchar2 (5)		Name of the state
FACILITYNAME	Varchar2 (100)		Name of the Facility
FACILITYTYPE	Varchar2 (40)		Describes type of Facility. Valid entries are: PIPE, PROD or STOR
FACILITYTYPEDESCRIPTION	Varchar2 (800)		Description of the facility type
GASDAYSTARTHOUR	Number(2,0)		Specifies the gas day start hour for this specific plant. Valid entries are 0 to 23.
COMPANYID	Number(10,0)		Unique company identifier
COMPANYNAME	Varchar2 (50)		Name of company
LOCATIONID	Number(10,0)		Unique Node Location Identifier
LOCATIONNAME	Varchar2 (100)		Name of the location.
LOCATIONTYPE	Varchar2 (40)		Type of location
LASTCHANGED	DATE		Last changed date for the record

3.17 Table: GAS_FACILITY_TYPE

Name GAS_FACILITY_TYPE

Comment A lookup table identifying the type of facilities stored in AEMO's GBB system

3.17.1 Primary Key Columns

Name
FacilityType

3.17.2 Content

Name	Data Type	Mandatory	Comment
FacilityType	VARCHAR2(40)	X	Identifier for a facility type
Description	VARCHAR2(800)		Description of the facility type
ActionType	VARCHAR2(40)		Used in aggregation
IsReportable	NUMBER(1,0)		1 if reportable, otherwise 0
LastChanged	DATE		Last time the record was changed

3.18 Table: GAS_LINEPACK_ADEQUACY

Name GAS_LINEPACK_ADEQUACY

Comment The linepack adequacy (flag) for each of the (non-exempt) BB pipelines

3.18.1 Primary Key Columns

Name
 FACILITYID
 GASDATE
 VERSIONDATETIME

3.18.2 Content

Name	Data Type	Mandatory	Comment
GASDATE	Date	X	Date of gas day applicable under either the pipeline contract or market rules
FACILITYID	Number(10,0)	X	Unique Facility identifier
VERSIONDATETIME	Date	X	Version date time for this operating state
FLAG	Varchar2 (5)		Expected adequacy for the gas day. Valid entries are GREEN, AMBER or RED
DESCRIPTION	Varchar2 (800)		Free text description of record

3.19 Table: GAS_LOCATION

Name GAS_LOCATION

Comment Lists all production and demand locations within the Bulletin Board system.

3.19.1 Primary Key Columns

Name

LocationId

3.19.2 Content

Name	Data Type	Mandatory	Comment
LocationId	NUMBER(10,0)	X	Unique Node Location Identifier
LocationName	VARCHAR2(100)		Name of the location.
LocationType	VARCHAR2(40)		Type of location
StateId	NUMBER(10,0)		Unique state identifier
Description	VARCHAR2(800)		Location description
LastChanged	DATE		Last time the record was changed.

3.20 Table: GAS_LOCATION_NODE

Name GAS_LOCATION_NODE
Comment Provides a list of nodes within a location.

3.20.1 Primary Key Columns

Name
 EffectiveDate
 LocationId
 NodeId
 VersionDateTime

3.20.2 Content

Name	Data Type	Mandatory	Comment
LocationId	NUMBER(10,0)	X	Unique Location Identifier
EffectiveDate	DATE	X	Effective date of the record
VersionDateTime	DATE	X	Version timestamp of the record
NodeId	NUMBER(10,0)	X	Unique Node Identifier

3.21 Table: GAS_LOCATION_NODE_TRK

Name GAS_LOCATION_NODE_TRK
Comment Provides a record of node tracking.

3.21.1 Notes

Name Comment Value
 Visibility Data in this table is: Public

3.21.2 Primary Key Columns

Name
 EffectiveDate
 LocationId
 VersionDateTime

3.21.3 Content

Name	Data Type	Mandatory	Comment
LocationId	NUMBER(10,0)	X	Unique Location identifier.
EffectiveDate	DATE	X	Effective date of the record
VersionDateTime	DATE	X	Version timestamp of the record
AuthorisedDate	DATE		Date and time this operating state was authorised
AuthorisedBy	VARCHAR2(30)		User which authorised the change
LastChanged	DATE		Date and time record was last modified

3.22 Table: GAS_LOCATION_OPSTATE

Name GAS_LOCATION_OPSTATE
Comment The operating status of all locations over time.

3.22.1 Notes

Name Comment Value
Visibility Data in this table is: Public

3.22.2 Primary Key Columns

Name
EffectiveDate
LocationId
VersionDateTime

3.22.3 Content

Name	Data Type	Mandatory	Comment
LocationId	NUMBER(10,0)	X	Unique Location identifier.
EffectiveDate	DATE	X	Effective date of the record
VersionDateTime	DATE	X	Version timestamp of the record
OperatingState	VARCHAR2(20)		Operating status - active, inactive.
AuthorisedDate	DATE		Date and time this operating state was authorised.
AuthorisedBy	VARCHAR2(30)		User that authorised the change
LastChanged	DATE		Date and time record was last modified

3.23 Table: GAS_MEDIUM_TERM_CAP_OUTLOOK

Name GAS_MEDIUM_TERM_CAP_OUTLOOK
Comment Provide the details of activities that may affect the daily capacity of the facility over the next 12 months.

3.23.1 Notes

Name Comment Value
 Visibility Data in this table is: Public

3.23.2 Primary Key Columns

Name
 CapacityType
 DeliveryLocation
 FacilityId
 FlowDirection
 FromGasDate
 ReceiptLocation
 VersionDateTime

3.23.3 Content

Name	Data Type	Mandatory	Comment
FacilityId	NUMBER(10,0)	X	Unique Facility Identifier
FromGasDate	DATE	X	Start date (inclusive) of the record
ToGasDate	DATE		End date (exclusive) of the record
VersionDateTime	DATE	X	Version timestamp of the record
CapacityType	VARCHAR2(20)	X	Capacity Type - Must be either STORAGE or MDQ
FlowDirection	VARCHAR2(20)	X	Direction of flow for the submission record. Must be one of 'RECEIPT' or 'DELIVERY'
ReceiptLocation	NUMBER(10,0)	X	Connection Point ID that best represents the receipt location
DeliveryLocation	NUMBER(10,0)	X	Connection Point ID that best represents the Delivery Location
OutlookQuantity	NUMBER(18,3)		Quantity of available capacity during the defined period
CapacityDescription	VARCHAR2(1000)		Describes the meaning of the capacity Number Provided
Description	VARCHAR2(1000)		Description for reasons or comments directly related to the quantity or change in Outlook quantity in relation to the Facility
ActiveFlag	NUMBER(1,0)		Active flag for the record. A value of 1 indicates the record is currently active
DisabledDateTime	DATE		Audit timestamp of the record
LastChanged	DATE		Date and time record was last modified

3.24 Table: GAS_NAMEPLATE_RATING

<i>Name</i>	GAS_NAMEPLATE_RATING
<i>Comment</i>	Provide the nameplate rating of each facility or information about any planned permanent capacity reduction or expansion due to modification of the facility.

3.24.1 Primary Key Columns

Name
 CapacityType
 DeliveryLocation
 EffectiveDate
 FacilityId
 FlowDirection
 ReceiptLocation
 VersionDateTime

3.24.2 Content

Name	Data Type	Mandatory	Comment
FacilityId	NUMBER(10,0)	X	Unique Facility Identifier
EffectiveDate	DATE	X	Effective date of the record
VersionDateTime	DATE	X	Version timestamp of the record.
CapacityType	VARCHAR(20)	X	Capacity Type - Must be either STORAGE or MDQ
FlowDirection	VARCHAR(20)	X	Direction of flow for the submission record. Must be either 'RECEIPT' or 'DELIVERY'.
ReceiptLocation	NUMBER(10,0)	X	Connection Point ID that best represents the Receipt location
DeliveryLocation	NUMBER(10,0)	X	Connection Point ID that best represents the Delivery Location
CapacityQuantity	NUMBER(18,3)		Quantity of available capacity during the defined period.
CapacityDescription	VARCHAR2(1000)		Describes the meaning of the capacity Number Provided
Description	VARCHAR2(1000)		Description for reasons or comments directly related to the quantity or change in Outlook quantity in relation to the Facility.

3.25 Table: GAS_NODE

Name GAS_NODE
Comment A container for up to four connections

3.25.1 Notes

Name Comment Value
 Visibility Data in this table is: Public

3.25.2 Primary Key Columns

Name
 NodeId

3.25.3 Content

Name	Data Type	Mandatory	Comment
NodeId	NUMBER(10,0)	X	Unique Node Identifier
StatId	NUMBER(10,0)		Unique StatId Identifier
LastChanged	DATE		Date and time record was last modified

3.26 Table: GAS_NODE_OPSTATE

Name GAS_NODE_OPSTATE
Comment The operating status of all facility nodes over time

3.26.1 Notes

Name Comment Value
 Visibility Data in this table is: Public

3.26.2 Primary Key Columns

Name
 EffectiveDate
 NodeId
 VersionDateTime

3.26.3 Content

Name	Data Type	Mandatory	Comment
NodeId	NUMBER(10,0)	X	Unique Node Identifier
EffectiveDate	DATE	X	Effective date of the record
VersionDateTime	DATE	X	Version timestamp of the record
OperatingState	VARCHAR2(20)		Operating status - active, inactive.
AuthorisedDate	DATE		Date and time this operating state was authorised.
AuthorisedBy	VARCHAR2(30)		User that authorised the change.
LastChanged	DATE		Date and time record was last modified

3.27 Table: GAS_NOMINATIONS_FORECAST

Name GAS_NOMINATIONS_FORECAST

Comment For BB pipelines forming part of a Declared Transmission System, provide on each gas day the aggregated scheduled injections and aggregated scheduled withdrawals at each controllable system point for gas day D to D+2.

For all other BB facility operators, provide on each gas day D the aggregated nominated and forecast injections and aggregated nominated and forecast withdrawals for gas day D to D+6.

3.27.1 Notes

Name	Comment	Value
Visibility	Data in this table is:	Private

3.27.2 Primary Key Columns

Name
 ConnectionPointId
 FacilityId
 FlowDirection
 GasDate
 VersionDateTime

3.27.3 Content

Name	Data Type	Mandatory	Comment
GasDate	DATE	X	Date of gas day
FacilityId	NUMBER(10,0)	X	Unique Facility Identifier
ConnectionPointId	NUMBER(10,0)	X	Unique connection point identifier.
VersionDateTime	DATE	X	Version timestamp of the record
FlowDirection	VARCHAR2(20)	X	Direction of flow for the submission record. Must be one of 'RECEIPT' or 'DELIVERY'
NominationQuantity	NUMBER(18,3)		Receipt or delivery nomination quantity in TJ

3.28 Table: GAS_NOMINATIONS_FORECAST_AGG

Name GAS_NOMINATIONS_FORECAST_AGG
Comment Provides the aggregate of forecast and nominations by location.

3.28.1 Notes

Name Comment Value
 Visibility Data in this table is: Public

3.28.2 Primary Key Columns

Name
 FacilityId
 GasDate
 LocationId
 VersionDateTime

3.28.3 Content

Name	Data Type	Mandatory	Comment
GasDate	DATE	X	Date of gas day
FacilityId	NUMBER(10,0)	X	Unique Facility Identifier
LocationId	NUMBER(10,0)	X	Unique Node Location Identifier
VersionDateTime	DATE	X	Version date time of the record
Demand	NUMBER(18,3)		Usage type expressed in TJ. Three decimal places is not shown if the value has trailing zeros after the decimal place.
Supply	NUMBER(18,3)		Usage type expressed in TJ. Three decimal places is not shown if the value has trailing zeros after the decimal place.
TransferIn	NUMBER(18,3)		Usage type expressed in TJ. Only applicable to BB pipelines. Three decimal places is not shown if the value has trailing zeros after the decimal place.
TransferOut	NUMBER(18,3)		Usage type expressed in TJ. Only applicable to BB pipelines. Three decimal places is not shown if the value has trailing zeros after the decimal place.
Completeness	NUMBER(3,0)		Completeness of aggregated figure in percentage
LastChanged	DATE		Last changed date for the record

3.29 Table: GAS_PARTICIPANT

Name GAS_PARTICIPANT

Comment The list of all registered organisations i.e the BB Participants of the Bulletin Board

3.29.1 Primary Key Columns

Name
COMPANYID

3.29.2 Content

Name	Data Type	Mandatory	Comment
COMPANYID	Number(10,0)	X	Unique company identifier
DESCRIPTION	Varchar2 (800)		Name of company
LASTCHANGED	Date		Date and time record was last modified

3.30 Table: GAS_SEC_CAP_ORDERS

<i>Name</i>	GAS_SEC_CAP_ORDERS
<i>Comment</i>	Information related to the bids and offers of secondary pipeline capacity, which is derived from a secondary pipeline capacity trading platform

3.30.1 Notes

Name	Comment	Value
Visibility	Data in this table is:	Public

3.30.2 Primary Key Columns

Name
OrderId

3.30.3 Index Columns

Name
SUBMITTINGCOMPANYID
VERSIONDATETIME

3.30.4 Index Columns

Name
FROMGASDATE
TOGASDATE

3.30.5 Content

Name	Data Type	Mandatory	Comment
OrderId	VARCHAR2(40)	X	Unique identifier for the order
SubmittingCompanyId	NUMBER(10,0)		Name of the company submitting the data to AEMO
VersionDateTime	DATE		Version timestamp of the record
FacilityId	NUMBER(10,0)		Unique facility Identifier
BuySell	VARCHAR2(5)		Indicates whether the shipper is either looking to buy or sell spare capacity
AvailableQuantity	NUMBER(18,3)		Quantity of actual flow for the gas date
Price	NUMBER(18,2)		Spare capacity price expressed in \$ per GJ
FromGasDate	DATE		Date spare capacity comes into effect
ToGasDate	DATE		Date spare capacity is effective to
ReceiptLocation	NUMBER(10,0)		Connection Point ID that best represents the receipt location
DeliveryLocation	NUMBER(10,0)		Connection Point ID that best represents the Delivery Location
ContactDetails	VARCHAR2(1000)		Name and number of the shippers contact person
LastChanged	DATE		Last changed date for the record

3.31 Table: GAS_SEC_CAP_ORDERS_TRK

Name GAS_SEC_CAP_ORDERS_TRK
Comment Bids and offer tracking information of secondary pipeline capacity

3.31.1 Notes

Name Comment Value
 Visibility Data in this table is: Public

3.31.2 Primary Key Columns

Name
 SubmittingCompanyId
 VersionDateTime

3.31.3 Content

Name	Data Type	Mandatory	Comment
SubmittingCompanyId	NUMBER(10,0)	X	Name of the company submitting the data to AEMO
VersionDateTime	DATE	X	Version timestamp of the record
LastChanged	DATE		Last changed date for the record

3.32 Table: GAS_SEC_CAP_TRADES

<i>Name</i>	GAS_SEC_CAP_TRADES
<i>Comment</i>	Information related to summary trading data, which is derived from a secondary pipeline capacity trading platform.

3.32.1 Notes

Name	Comment	Value
Visibility	Data in this table is:	Public

3.32.2 Primary Key Columns

Name
TradeId

3.32.3 Index Columns

Name
SUBMITTINGCOMPANYID
VERSIONDATETIME

3.32.4 Index Columns

Name
GASDATE

3.32.5 Content

Name	Data Type	Mandatory	Comment
TradeId	VARCHAR2(40)	X	Unique identifier for the trade
SubmittingCompanyId	NUMBER(10,0)		Name of the company submitting the data to AEMO
VersionDateTime	DATE		Version timestamp of the record
FacilityId	NUMBER(10,0)		Unique facility Identifier
GasDate	DATE		Gas date
ReceiptLocation	NUMBER(10,0)		Connection Point ID that best represents the Receipt location
DeliveryLocation	NUMBER(10,0)		Connection Point ID that best represents the Delivery Location
NameplateCapacity	NUMBER(18,3)		Official pipeline capacity expressed in GJ
DailyNominations	NUMBER(18,3)		Daily aggregate quantity of gas (expressed in GJ) nominated for delivery from the pipeline
DailyUtilisationPercent	NUMBER(18,2)		Percentage of the pipeline capacity that is utilised per day
AvailableCapacity	NUMBER(18,3)		Operational capacity minus nominations each day. Expressed in GJ
CapacityOnOffer	NUMBER(18,3)		Sum of total capacity offered for sale expressed in GJ
DailyCapacityTraded	NUMBER(18,3)		Sum of total daily sold capacity expressed in GJ
DailyCapacity	NUMBER(18,3)		Operational capacity
ContractedCapacity	NUMBER(18,3)		Firm-forward, contracted pipeline capacity expressed in GJ.

AverageAnnualCapacityT rated	NUMBER(18,3)		Sum of total annual sold capacity divided by number of days, year to date. Expressed in GJ.
LastChanged	DATE		Last changed date for the record

3.33 Table: GAS_SEC_CAP_TRADES_TRK

Name GAS_SEC_CAP_TRADES_TRK
Comment Information related to summary trading data, which is derived from a secondary pipeline capacity trading platform.

3.33.1 Notes

Name Comment Value
 Visibility Data in this table is: Public

3.33.2 Primary Key Columns

Name
 SubmittingCompanyld
 VersionDateTime

3.33.3 Content

Name	Data Type	Mandatory	Comment
SubmittingCompanyld	NUMBER(10,0)	X	Name of the company submitting the data to AEMO
VersionDateTime	DATE	X	Version timestamp of the record
LastChanged	DATE		Last changed date for the record

3.34 Table: GAS_SHORT_TERM_CAP_OUTLOOK

Name GAS_SHORT_TERM_CAP_OUTLOOK
Comment Provides on each gas day D, the BB facility operator’s good faith estimate of the daily capacity of the BB Facility for gas days D+1 to D+7.

3.34.1 Notes

Name	Comment	Value
Visibility	Data in this table is:	Public

3.34.2 Primary Key Columns

Name
 CAPACITYTYPE
 DELIVERYLOCATION
 FACILITYID
 FLOWDIRECTION
 GASDATE
 RECEIPTLOCATION
 VERSIONDATETIME

3.34.3 Content

Name	Data Type	Mandatory	Comment
GASDATE	DATE	X	Date of gas day
FACILITYID	NUMBER(10,0)	X	Unique Facility Identifier
VERSIONDATETIME	DATE	X	Version timestamp of the record
CAPACITYTYPE	VARCHAR2(20)	X	Capacity Type - Must be either STORAGE or MDQ
FLOWDIRECTION	VARCHAR2(20)	X	Direction of flow for the submission record. Must be one of 'RECEIPT' or 'DELIVERY'
RECEIPTLOCATION	NUMBER(10,0)	X	Connection Point ID that best represents the receipt location
DELIVERYLOCATION	NUMBER(10,0)	X	Connection Point ID that best represents the Delivery Location
OUTLOOKQUANTITY	NUMBER(18,3)		Quantity of available capacity during the defined period
CAPACITYDESCRIPTION	VARCHAR2(1000)		Describes the meaning of the capacity Number Provided
DESCRIPTION	VARCHAR2(1000)		Description for reasons or comments directly related to the quantity or change in Outlook quantity in relation to the Facility

3.35 Table: GAS_STATE

Name GAS_STATE
Comment List of states.

3.35.1 Notes

Name Comment Value
 Visibility Data in this table is: Public

3.35.2 Primary Key Columns

Name
 StateId

3.35.3 Content

Name	Data Type	Mandatory	Comment
StateId	NUMBER(10,0)	X	Unique state identifier
State	VARCHAR2(5)		State details
StateName	VARCHAR2(50)		Name of the state
LastChanged	DATE		Last changed date for the record

3.36 Table: GAS_UNCONTRACTED_CAP_OUTLOOK

Name GAS_UNCONTRACTED_CAP_OUTLOOK
Comment Provide the uncontracted capacity of the facility over the next 12 months.

3.36.1 Notes

Name Comment Value
 Visibility Data in this table is: Public

3.36.2 Primary Key Columns

Name
 CapacityType
 DeliveryLocation
 FacilityId
 FlowDirection
 OutlookMonth
 OutlookYear
 ReceiptLocation
 VersionDateTime

3.36.3 Content

Name	Data Type	Mandatory	Comment
OutlookYear	NUMBER(4,0)	X	The outlook year
OutlookMonth	NUMBER(4,0)	X	The outlook month.
FacilityId	NUMBER(10,0)	X	Unique Facility Identifier
VersionDateTime	DATE	X	Version timestamp of the record
CapacityType	VARCHAR2(20)	X	Capacity Type - Must be either STORAGE or MDQ
FlowDirection	VARCHAR2(20)	X	Direction of flow for the submission record. Must be one of 'RECEIPT' or 'DELIVERY'
ReceiptLocation	NUMBER(10,0)	X	Connection Point ID that best represents the receipt location
DeliveryLocation	NUMBER(10,0)	X	Connection Point ID that best represents the Delivery Location
OutlookQuantity	NUMBER(18,3)		Quantity of available capacity during the defined period
CapacityDescription	VARCHAR2(1000)		Describes the meaning of the capacity Number Provided
Description	VARCHAR2(1000)		Description for reasons or comments directly related to the quantity or change in Outlook quantity in relation to the Facility