



# **GAS SUPPLY HUB TRADING SUMMARY**

**18 SEPTEMBER 2019**

## **DISCLAIMER**

AEMO has made every effort to ensure the quality of the information in this publication but cannot guarantee that information and assumptions are accurate, complete or appropriate for your circumstances. This publication does not include all of the information that an investor, participant or potential participant in the Gas Supply Hub or any other gas market might require and does not amount to a recommendation of any investment or a forecast or representation of future gas transactions or usage.

Anyone proposing to use the information in this publication (including information and reports from third parties) should independently verify and check its accuracy, completeness and suitability for purpose, and obtain independent and specific advice from appropriate experts.

Accordingly, to the maximum extent permitted by law, AEMO and its officers, employees and consultants involved in the preparation of this publication:

- make no representation or warranty, express or implied, as to the currency, accuracy, reliability or completeness of the information in this publication; and
- are not liable (whether by reason of negligence or otherwise) for any statements, opinions, information or other matters contained in or derived from this publication, or any omissions from it, or in respect of a person's use of the information in this publication.

# WEEK COMMENCING MONDAY 9 September 2019

## Overview

The Gas Supply Hub (GSH) Trading Summary is a weekly report on trading outcomes in the GSH. This week's edition presents delivered volumes and prices by pipeline and product for 9 September to 15 September 2019.

## Notes

All information is collated by *Gas Day* (unless otherwise specified) and volume *traded* (as opposed to volume *delivered*)

- The Wallumbilla Benchmark price is determined and published by AEMO.  
[http://nemweb.com.au/Reports/Current/GSH/Benchmark\\_Price/](http://nemweb.com.au/Reports/Current/GSH/Benchmark_Price/)

Figure 1 GSH TRADES BY GAS DAY

Week-on-week comparison of all GSH traded volume for delivery on a Gas Day (GJ) by Trading Location, apportioned between on-market (exchange trades) and off-market (manual trades).

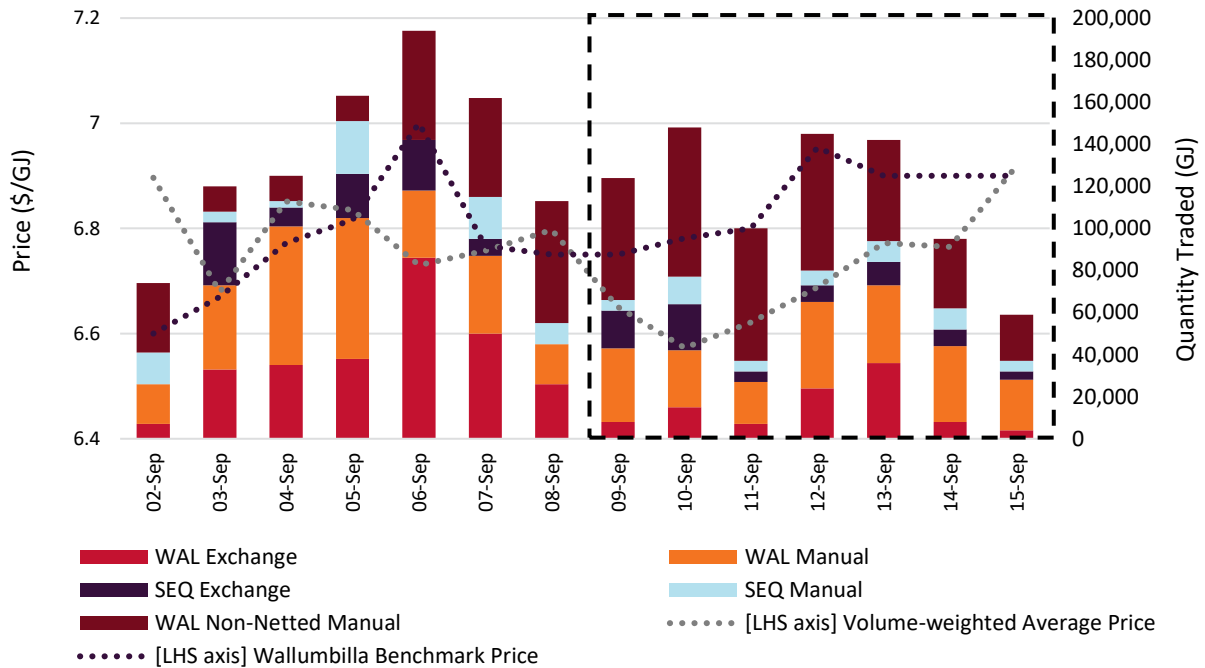


Table 1 WEEKLY STATISTICS BY TRADING LOCATION AND PRODUCT

PIPELINE	PRODUCT	QUANTITY TRADED (GJ)	VOLUME-WEIGHTED PRICE (\$/GJ)			TRADES
			AVE	LOW	HIGH	
SEQ	Daily	60,000	6.01	5.80	6.33	17
SEQ	Day Ahead	18,000	6.09	5.65	6.35	6
SEQ	Day Ahead - non-netted	9,000	5.91	5.80	6.15	3
SEQ	Balance-of-Day	28,000	5.97	5.60	6.30	9
WAL	Daily	65,000	6.90	6.78	7.20	16
WAL	Day Ahead	122,000	6.87	6.75	7.00	12
WAL	Day Ahead - non-netted	33,000	6.92	6.80	7.00	6
WAL	Balance-of-Day	12,000	6.83	6.75	6.90	6
WAL	Weekly	14,000	7.00	7.00	7.00	1
WAL-N-Netted	Daily	20,000	6.48	5.95	7.00	3
WAL-N-Netted	Day Ahead	13,000	6.55	6.00	6.90	2
WAL-N-Netted	Balance-of-Day	7,000	6.36	5.95	7.40	2
Wallumbilla Benchmark Price			6.88	6.75	6.95	

Figure 2 PRICE COMPARISONS | AEMO GAS MARKETS v WALLUMBILLA BENCHMARK PRICE

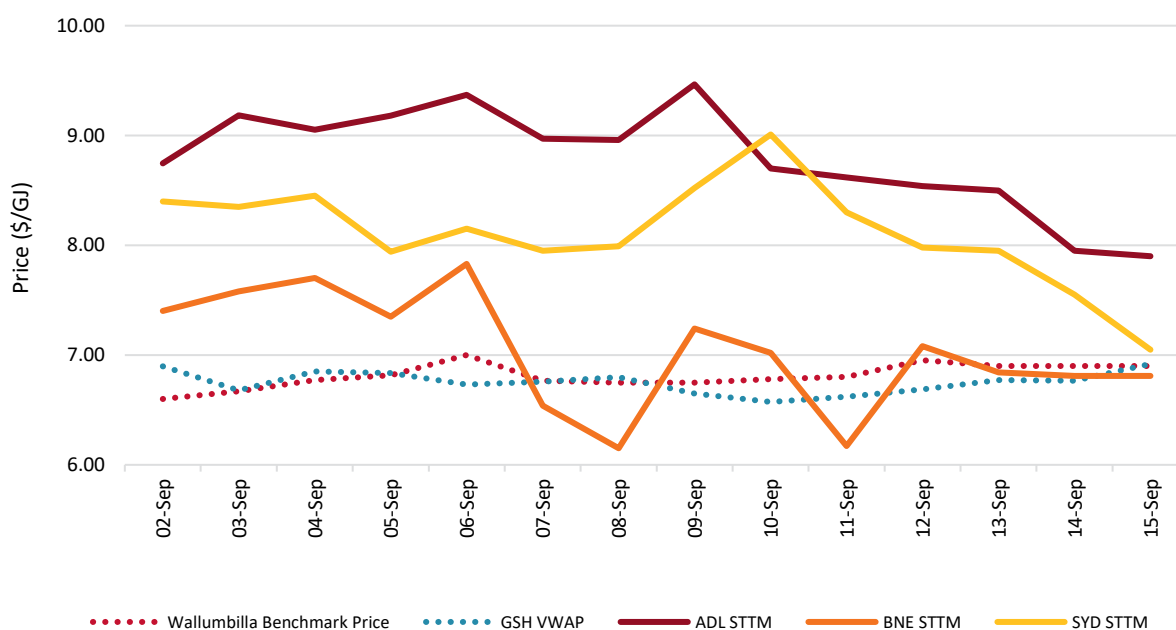


Figure 4 GAS-POWERED GENERATION | QUEENSLAND

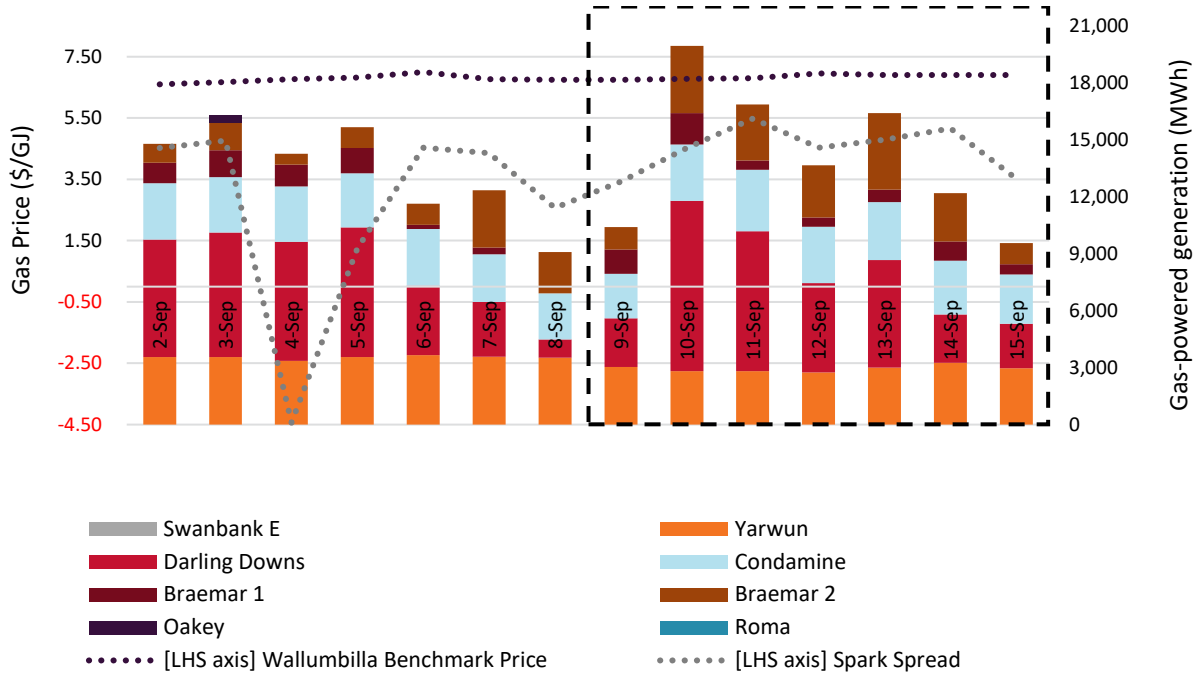


Figure 5 GAS CONSUMED BY GAS-POWERED GENERATION | ALL NEM REGIONS

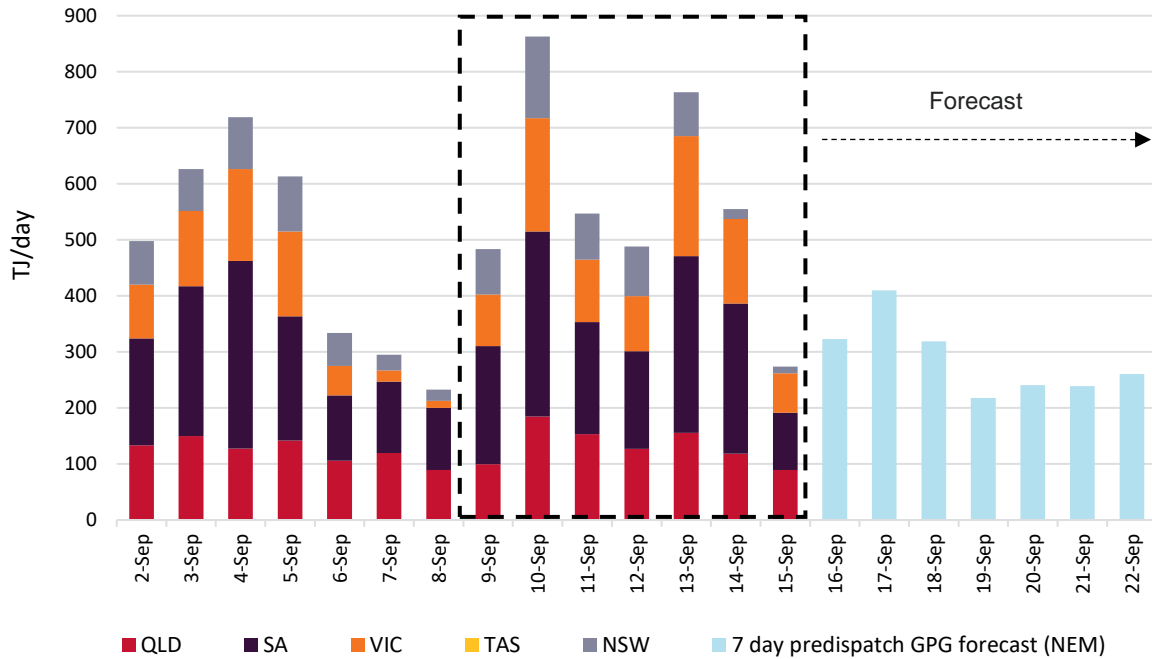


Table 2 MONTHLY GAS DAY DELIVERY SUMMARY

MONTH	PIPELINE	BALANCE OF DAY	DAY AHEAD	DAILY	WEEKLY	MONTHLY	TOTAL QUANTITY DELIVERED	VWAP (\$)	TRADES
Sep-19	MSP	0	15,000	25,000	0	0	1,928,000	6.75	238
Sep-19	SEQ	100,000	96,000	133,000	0	0			
Sep-19	WAL	187,000	412,000	243,000	53,000	32,000			
Sep-19	WAL Non-Netted	123,000	35,000	160,000	122,000	192,000			
Aug-19	MSP	121,000	77,000	5,000	0	155,000	3,692,800	7.22	358
Aug-19	SEQ	345,000	267,000	117,000	77,000	0			
Aug-19	WAL	399,000	495,000	185,000	168,000	465,000			
Aug-19	WAL Non-Netted	343,800	98,800	64,200	0	310,000			
Jul-19	MOO Non-Netted	0	0	0	0	31,000	2,873,100	8.07	249
Jul-19	MSP	0	18,000	5,000	0	155,000			
Jul-19	SEQ	346,000	149,000	72,000	0	0			
Jul-19	WAL	368,000	216,000	112,000	0	775,000			
Jul-19	WAL Non-Netted	135,000	99,100	20,000	0	372,000			
Jun-19	MSP	29,000	19,000	108,000	224,000	150,000	3,076,500	8.82	339
Jun-19	SEQ	287,000	225,000	191,000	121,000	60,000			
Jun-19	WAL	168,000	161,000	155,000	261,000	360,000			
Jun-19	WAL Non-Netted	80,500	145,500	81,000	55,500	195,000			
May-19	MAP	0	15,000	20,000	0	0	2,430,700	8.18	403
May-19	MSP	0	22,000	78,000	0	0			

May-19	SEQ	285,000	142,000	316,000	54,000	124,000			
May-19	WAL	163,000	222,000	221,000	61,000	155,000			
May-19	WAL Non-Netted	121,700	116,000	54,000	137,000	124,000			
Apr-19	MOO Non-Netted	0	1,000	0	0	0			
Apr-19	MSP	0	3,000	0	0	0			
Apr-19	SEQ	230,000	183,000	139,000	70,000	120,000	1,847,400	9.01	258
Apr-19	WAL	186,000	154,000	148,000	196,000	0			
Apr-19	WAL Non-Netted	117,400	30,000	65,000	175,000	30,000			
Mar-19	SEQ	302,000	185,000	308,000	202,000	248,000			
Mar-19	WAL	96,000	179,000	230,000	35,000	93,000	2,266,500	8.76	352
Mar-19	WAL Non-Netted	26,500	51,000	158,000	91,000	62,000			
Feb-19	SEQ	166,000	222,000	293,000	101,000	0			
Feb-19	WAL	64,000	188,000	414,000	0	0	1,504,000	9.07	298
Feb-19	WAL Non-Netted	30,000	8,000	18,000	0	0			
Jan-19	MSP	10,000	10,000	10,000	0	0			
Jan-19	SEQ	215,000	259,000	253,000	180,000	0			
Jan-19	WAL	130,000	261,000	291,000	210,000	0	1,843,600	9.54	262
Jan-19	WAL Non-Netted	0	3,600	11,000	0	0			
Dec-18	SEQ	80,000	203,000	213,000	492,000	620,000			
Dec-18	WAL	77,000	143,000	12,000	0	0	2,564,600	9.94	167
Dec-18	WAL Non-Netted	13,000	24,600	25,200	196,800	465,000			
Nov-18	SEQ	68,000	65,000	118,000	53,000	660,000	1,620,900	10.04	118

Nov-18	WAL	24,000	27,000	92,000	0	0			
Nov-18	WAL Non-Netted	7,100	7,100	7,100	42,600	450,000			
Oct-18	MSP	0	11,000	22,000	0	0	1,689,000	9.77	160
Oct-18	SEQ	129,000	163,000	220,000	8000	620,000			
Oct-18	WAL	2,000	17,000	32,000	0	0			
Oct-18	WAL Non-Netted	0	0	0	0	465,000			
Sep-18	SEQ	146,000	189,000	94,000	161,000	240,000			
Sep-18	WAL	24,000	102,000	58,000	-	180,000	1,314,000	9.33	157
Sep-18	WAL Non-Netted	-	5,000	43,000	42,000	30,000			
Aug-18	SEQ	242,000	205,000	280,000	-	155,000			
Aug-18	WAL	88,000	46,000	10,000	-	-	1,181,000	9.16	148
Aug-18	WAL Non-Netted	-	-	-	-	155,000			