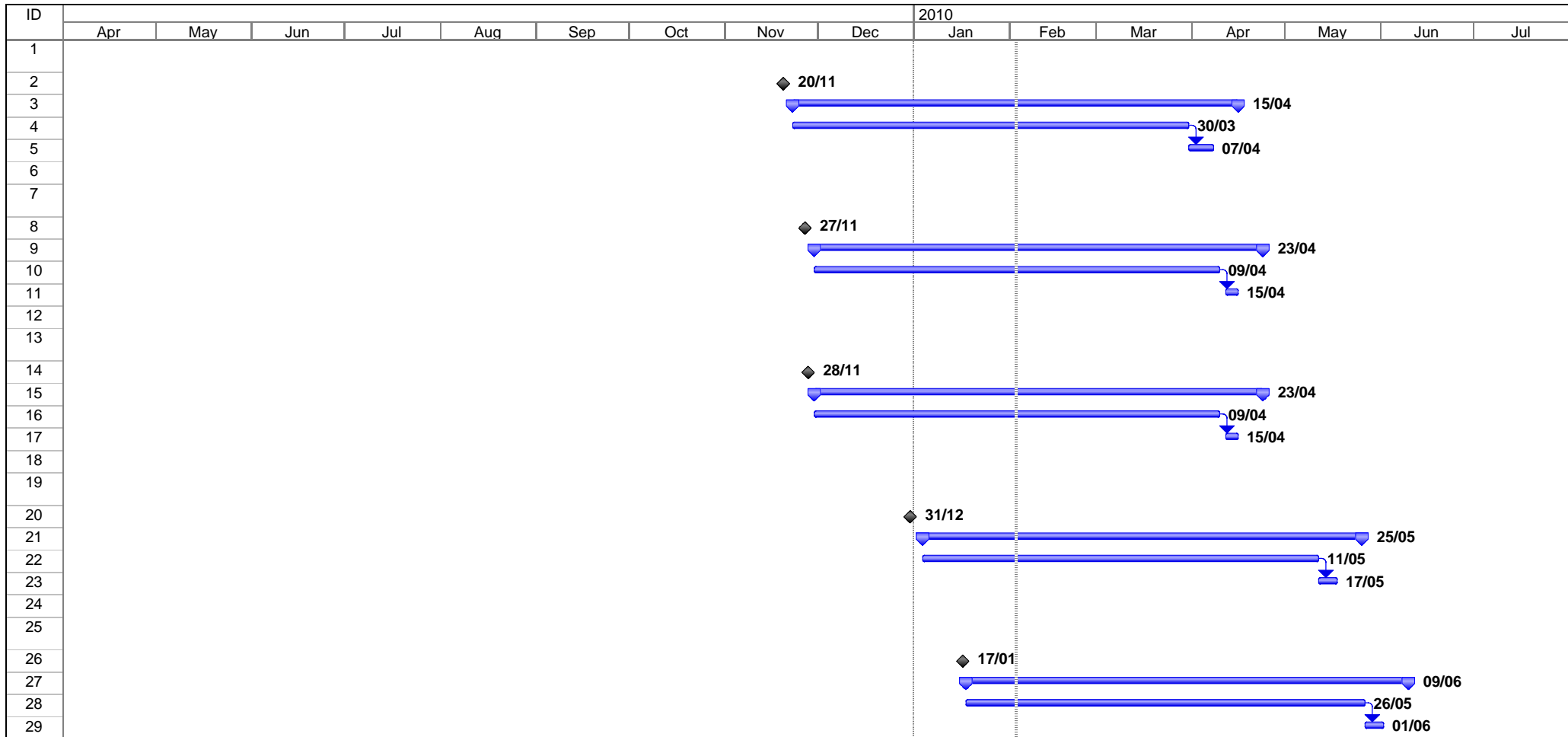


ID	Task Name	Duration	Start	Finish	2009				
					Nov	Dec	Jan	Feb	Mar
1	Directions_20 November 2009_NSW Region	101 days	Fri 20/11/09	Thu 15/04/10					
2	Directions cancelled	0 days	Fri 20/11/09	Fri 20/11/09					
3	Compensation determined pursuant to CI 3.15.7	100 days	Mon 23/11/09	Thu 15/04/10					
4	AEMO calculates compensation using formula in clause 3.15.7 of Rules	90 days	Mon 23/11/09	Tue 30/03/10					
5	AEMO advises parties of the compensation amount	4 days	Wed 31/03/10	Wed 07/04/10					
6									
7	Directions_27 November 2009_SA Region	102 days	Fri 27/11/09	Fri 23/04/10					
8	Directions cancelled	0 days	Fri 27/11/09	Fri 27/11/09					
9	Compensation determined pursuant to CI 3.15.7A	100 days	Mon 30/11/09	Fri 23/04/10					
10	AEMO calculates compensation using IE Fair Payment Price	90 days	Mon 30/11/09	Fri 09/04/10					
11	AEMO advises parties of the compensation amount	4 days	Mon 12/04/10	Thu 15/04/10					
12									
13	Directions_28 November 2009_QLD Region	101 days	Sat 28/11/09	Fri 23/04/10					
14	Directions cancelled	0 days	Sat 28/11/09	Sat 28/11/09					
15	Compensation determined pursuant to CI 3.15.7A	100 days	Mon 30/11/09	Fri 23/04/10					
16	AEMO calculates compensation using IE Fair Payment Price	90 days	Mon 30/11/09	Fri 09/04/10					
17	AEMO advises parties of the compensation amount	4 days	Mon 12/04/10	Thu 15/04/10					
18									
19	Directions_31 December 2009_TAS Region	101 days	Thu 31/12/09	Tue 25/05/10					
20	Directions cancelled	0 days	Thu 31/12/09	Thu 31/12/09					
21	Compensation determined pursuant to CI 3.15.7	100 days	Mon 04/01/10	Tue 25/05/10					
22	AEMO calculates compensation using formula in clause 3.15.7 of the Rules	90 days	Mon 04/01/10	Tue 11/05/10					
23	AEMO advises parties of the compensation amount	4 days	Wed 12/05/10	Mon 17/05/10					
24									
25	Directions_17 January 2010_QLD Region	101 days	Sun 17/01/10	Wed 09/06/10					
26	Directions cancelled	0 days	Sun 17/01/10	Sun 17/01/10					
27	Compensation determined pursuant to CI 3.15.7A	100 days	Mon 18/01/10	Wed 09/06/10					
28	AEMO calculates compensation using IE Fair Payment Price	90 days	Mon 18/01/10	Wed 26/05/10					
29	AEMO advises parties of the compensation amount	4 days	Thu 27/05/10	Tue 01/06/10					

Project: Sample Intervention timetable
Date: Wed 03/02/10

Task		Milestone		External Tasks	
Split		Summary		External MileTask	
Progress		Project Summary		Split	



Project: Sample Intervention timetable
Date: Wed 03/02/10

Task		Milestone	◆	External Tasks	
Split		Summary		External MileTask	◆
Progress		Project Summary		Split	⇩