

The following table provides the information on the operation of the Swing Service market on the North Metro and South Metro sub-networks over a 13 month rolling window.

Month	Metro-South Sub-Network		Metro-North Sub-Network	
	Peak SS South-Metro	Average SS South-Metro	Peak SS North-Metro	Average SS North-Metro
June 2016			932	97
July 2016			461	95
August 2016			434	86
September 2016			1,617	412
October 2016			3,481	268
November 2016			6,598	793
December 2016	1,837	204	1,129	119
January 2017	519	127	446	109
February 2017	1,135	167	1,340	143
March 2017	1,468	192	290	62
April 2017	1,313	216	663	133
May 2017	721	98	711	84
June 2017	1,042	124	694	87
<b>Average</b>	<b>Since March 2016</b>	<b>161</b>	<b>2-year</b>	<b>132</b>

**North Metro**

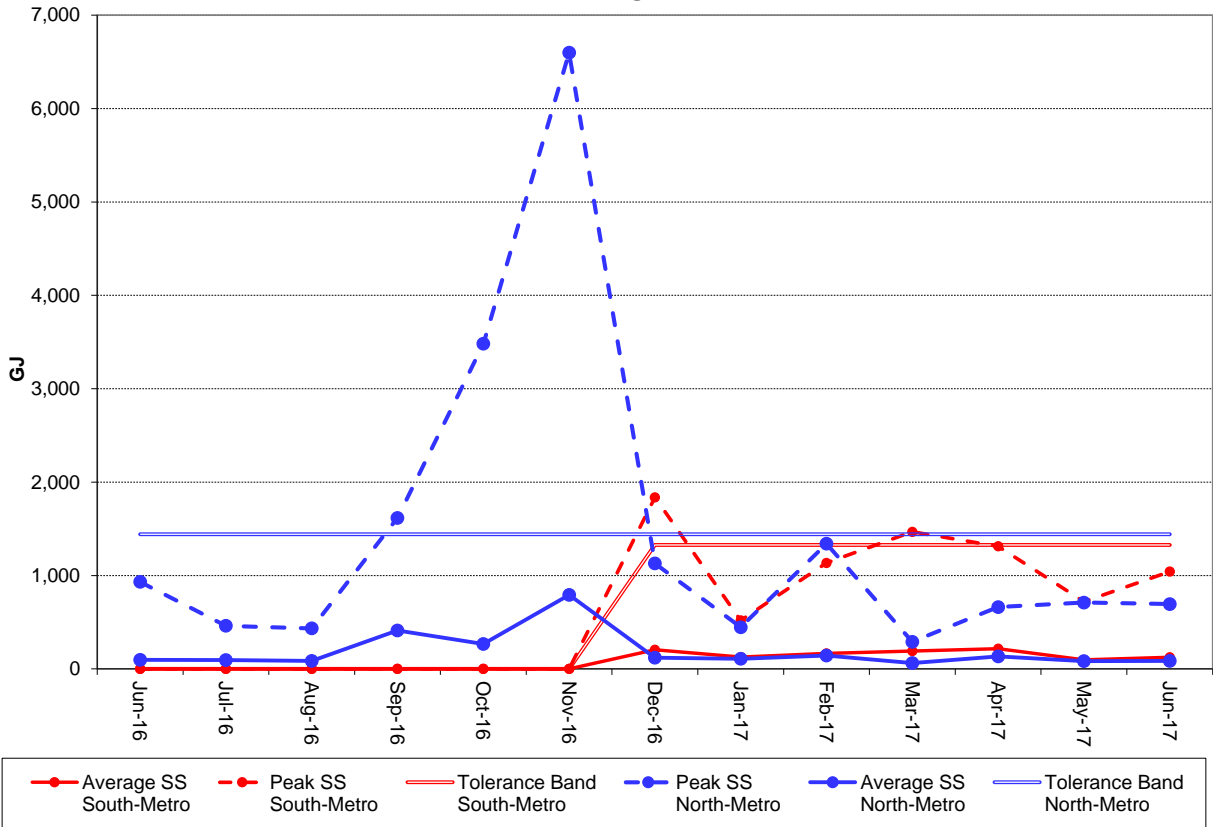
The average and peak Swing Service volumes in the North Metro sub-network for June 2017 were at normal levels for this month.

**South Metro**

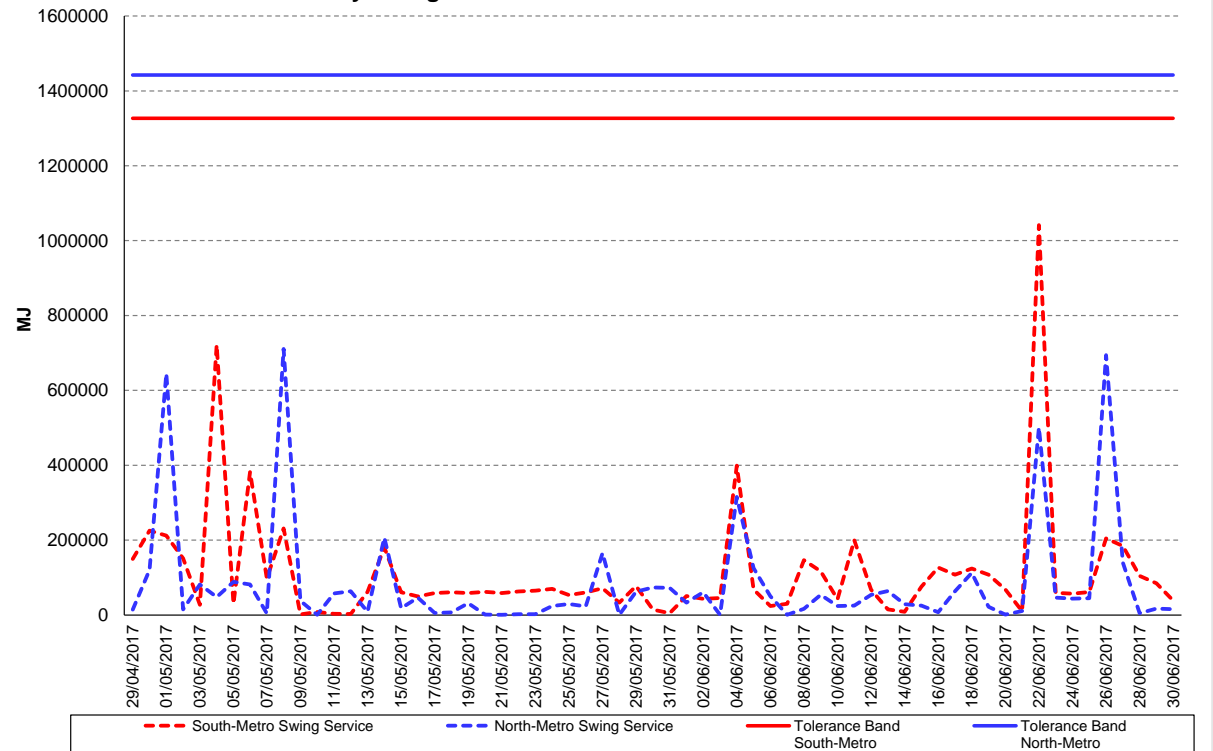
Swing Service has applied in the South Metro sub-network since March 2016, so there is still not a sufficient long-term trend to use as a comparator for market performance.



13 Month Swing Service Results



Daily Swing Service Volumes for a Two Month Period



Terms:

- Peak SS means the maximum amount of Swing Service recorded on a day during that month.
- Average SS means the average amount of Swing Service for any day in that month.
- Peak Trend is the linear trend of the Peak SS data, using the least squares method.
- Average Trend is the linear trend of the Average SS data, using the least squares method.
- Tolerance Band is a marker – REMCo will investigate and report on any Swing Service spikes that are larger than the Tolerance Band. The Tolerance Band is defined as a volume equal to the mean amount of Swing Service over the last 2 years plus 3 standard deviations.