

# GAS MMS DATA MODEL PACKAGE SUMMARY

AEMO Gas Data Model v1.3 Oracle

PREPARED BY: IMT

DATE: 25/10/2016

## Table of Contents

<b>1</b>	<b>List of packages</b>	<b>2</b>
<b>2</b>	<b>Description of model AEMO Gas Data Model v1.3 Oracle</b>	<b>2</b>
<b>3</b>	<b>Package: GAS_BB</b>	<b>3</b>
3.1	List of tables	3
3.2	Diagram: Entities: Gas Bulletin Board	5
<b>4</b>	<b>Package: GAS_SUPPLY_HUB</b>	<b>6</b>
4.1	List of tables	6
4.2	Diagram: Entities: Gas Supply Hub	10

## Disclaimer

This document is made available to you on the following basis:

(a) Purpose - This document is provided by the Australian Energy Market Operator Limited (AEMO) to you for information purposes only. You are not permitted to commercialise it or any information contained in it.

(b) No Reliance or warranty - This document may be subsequently amended. AEMO does not warrant or represent that the data or information in this document is accurate, reliable, complete or current or that it is suitable for particular purposes. You should verify and check the accuracy, completeness, reliability and suitability of this document for any use to which you intend to put it and seek independent expert advice before using it, or any information contained in it.

(c) Limitation of liability - To the extent permitted by law, AEMO and its advisers, consultants and other contributors to this document (or their respective associated companies, businesses, partners, directors, officers or employees) shall not be liable for any errors, omissions, defects or misrepresentations in the information contained in this document, or for any loss or damage suffered by persons who use or rely on such information (including by reason of negligence, negligent misstatement or otherwise). If any law prohibits the exclusion of such liability, AEMO's liability is limited, at AEMO's option, to the re-supply of the information, provided that this limitation is permitted by law and is fair and reasonable.

© 2010 - All rights reserved.

## 1 List of packages

Name	Comment
GAS_BB	
GAS_SUPPLY_HUB	Gas Supply Hub markets reports to provide Participants with information on their trades, prudential exposure, settlement runs, and registration details

## 2 Description of model AEMO Gas Data Model v1.3 Oracle

**This page is intentionally blank**

### 3 Package: GAS\_BB

Name GAS\_BB

Comment

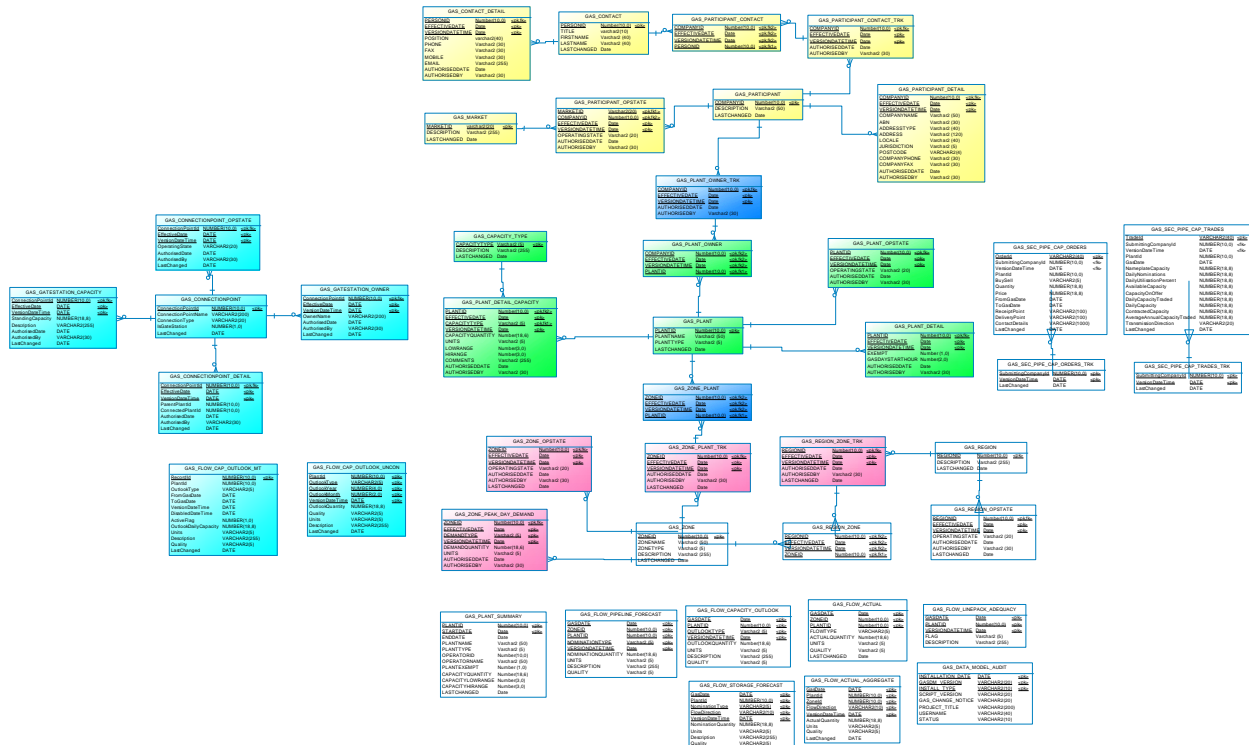
#### 3.1 List of tables

Name	Comment
GAS_CAPACITY_TYPE	Capacity Type - The type of capacity detailed. Valid entries are: HCAP, MDQ, RMDQ or WMDQ
GAS_CONNECTIONPOINT	Entity table for connection points
GAS_CONNECTIONPOINT_D ETAILED	Time-evolving table for connection points holding attributes that can change over time
GAS_CONNECTIONPOINT_O PSTATE	Time-evolving operating status (active/inactive flag) table for connection points
GAS_CONTACT	The registered user list of responsible contact persons for each BB Participant organisation as identified at registration or otherwise
GAS_CONTACT_DETAIL	The registered user list details of responsible contact persons for each BB Participant organisation as identified at registration or otherwise
GAS_DATA_MODEL_AUDIT	GAS_DATA_MODEL_AUDIT shows the audit trail of scripts applied to this installation of Gas Data Model. Participants should ensure that if a database is cloned the content of this table is copied to the target database
GAS_FLOW_ACTUAL	The actual / historical production and pipeline delivery (Victorian PTS injections) data for all of the BB facilities
GAS_FLOW_ACTUAL_AGGR EGATE	Actual flow and actual gas held in storage data aggregated to a facility level
GAS_FLOW_CAP_OUTLOOK _MT	Information that the operator of a facility issues, about matters expected to affect the daily capacity of the facility, for an outlook period extending beyond the current short term capacity outlook provided by the relevant operator
GAS_FLOW_CAP_OUTLOOK _UNCON	Primary pipeline or storage capacity that is available for sale by the facility operator. The outlook is provided for 12 months into the future on a per-month basis
GAS_FLOW_CAPACITY_OUT LOOK	The capacity outlook for each of BB pipeline and each BB facility for the next 3 days. The outlook capacity type will be dependent upon the type of plant eg. production and storage facilities will report production capacity, pipelines will report transmission capacity whilst interconnects will report transmission capacity and reverse direction transmission capacity
GAS_FLOW_LINEPACK_ADE QUACY	The linepack adequacy (flag) for each of the (non-exempt) BB pipelines
GAS_FLOW_PIPELINE_FOR ECAST	The forecast pipeline flows for each of the BB pipelines for the outlook period. Provision is made to report an outlook period of up to 7 days (though more data can be stored in the BB system and used as required). The Victorian market will use scheduled injections for each BB pipeline (LMP, SWP) and the LNG facility as well as the scheduled Interconnect flow. The outlook period for the Victorian market is 3 days, being the current and next 2 gas days
GAS_FLOW_STORAGE_FOR ECAST	Nominated and forecast flow data from operators of storage facilities
GAS_GATESTATION_CAPAC ITY	Time-evolving standing capacity information for gate station connection points
GAS_GATESTATION_OWNE R	Time-evolving organisation ownership information for gate station connection points
GAS_MARKET	The list of defined Gas Markets against which the Participant

	Operating Status is activated
GAS_PARTICIPANT	The list of all registered organisations i.e the BB Participants of the Bulletin Board
GAS_PARTICIPANT_CONTACT	The detail of contacts against a gas participant over time
GAS_PARTICIPANT_CONTACT_TRK	The tracking of sets of contacts against a gas participant over time
GAS_PARTICIPANT_DETAIL	The details of all registered organisations i.e the BB Participants of the Bulletin Board over time
GAS_PARTICIPANT_OPSTATE	The operating status of all registered organisations i.e the BB Participants of the Bulletin Board over time
GAS_PLANT	The list of all gas plant
GAS_PLANT_DETAIL	The details of all gas plant facilities over time
GAS_PLANT_DETAIL_CAPACITY	The standing nameplate capacity of all gas plant facilities over time
GAS_PLANT_OPSTATE	The operating status of all gas plant facilities over time
GAS_PLANT_OWNER	The detail of plant ownership over time
GAS_PLANT_OWNER_TRK	The tracking of plant ownership over time
GAS_PLANT_SUMMARY	A summary of gas plant, capacity and ownership through time
GAS_REGION	The list of defined regions. Currently there is only a single region covering the east coast gas system
GAS_REGION_OPSTATE	The operating status of a gas region
GAS_REGION_ZONE	The set of zones within a region over time
GAS_REGION_ZONE_TRK	The set of zones within a region over time
GAS_SEC_PIPE_CAPACITY_ORDERS	Information related to the bids and offers of secondary pipeline capacity, which is derived from a secondary pipeline capacity trading platform
GAS_SEC_PIPE_CAPACITY_ORDERS_TRK	Bids and offer tracking information of secondary pipeline capacity
GAS_SEC_PIPE_CAPACITY_TRADES	Information related to summary trading data, which is derived from a secondary pipeline capacity trading platform.
GAS_SEC_PIPE_CAPACITY_TRADES_TRK	Information related to summary trading data, which is derived from a secondary pipeline capacity trading platform.
GAS_ZONE	The list of defined gas zones. A gas zone is a notional geographic concept
GAS_ZONE_OPSTATE	The operating status of a gas zone
GAS_ZONE_PEAK_DAY_DEMAND	The forecast peak demand (Summer and Winter) for each gas zone over time
GAS_ZONE_PLANT	The set of plant within a gas zone over time
GAS_ZONE_PLANT_TRK	Tracks the set of plant within a gas zone over time

### 3.2 Diagram: Entities: Gas Bulletin Board

<p>Name Code Comment</p>	<p>Entities: Gas Bulletin Board  <b>ENTITIES__GAS_BULLETIN_BOARD</b>          The Gas BB ERD is Colour Coded as an aid.          The Yellow tables denote Participant Registration.          The Green tables denote Participant - Plant ownership and Plant properties.          The Purple tables denote Plant Regional and Zone details.          The Blue tables are utility tables          - Joining tables between the above types          - Plant ownership summary          - Flow tables</p>
----------------------------------	---



## 4 Package: GAS\_SUPPLY\_HUB

<i>Name</i>	GAS_SUPPLY_HUB
<i>Comment</i>	Gas Supply Hub markets reports to provide Participants with information on their trades, prudential exposure, settlement runs, and registration details

### 4.1 List of tables

Name	Comment
GSH_BENCHMARK_PRICE	The report contains the benchmark prices for the day ahead (non-firm price) PLUS the last two years of daily benchmark prices (firm price)
GSH_DELIVERED_QUANTITY	The purpose of this report is to provide the Participants (buyer and seller) an acknowledgement whenever a delivered quantity record is submitted or confirmed. The report will also provide Participants with a list of all their delivered quantity records updated within the last thirty days when triggered daily prior to the start of trades for the current day.
GSH_DELIVERY_NETT_POINTS	List of delivery point preferences if delivery points are overridden. Child record of GSH_DELIVERY_NETT_PREFS
GSH_DELIVERY_NETT_PREFS	Provide a history of Delivery Netting Preferences entered through the new Delivery Netting Web Interface.
GSH_DELIVERY_OBLIGATIONS	The purpose of this report is to provide the Participants with their Delivery Obligations at each location. Delivery Obligation quantities are results of the delivery netting process.
GSH_HISTORICAL_SUMMARY	The report provides a summary of all trades delivered in the current gas day and the last thirty gas days per product location. It provides information on the volume weighted average price, and the total traded quantities.
GSH_ORDERS	The purpose of this report is to provide the Participant a confirmation whenever an order (bid or offer) is submitted, amended, or cancelled.
GSH_PARTICIPANT_CONTACTS	The purpose of this report is to provide the participant with a list of all their contact details.
GSH_PARTICIPANTS	The report contains the registration details of all participants currently registered in the GSH market.
GSH_PRD_BANK_GUARANTEES	The purpose of the Prudential Exposure report is to provide organisations with daily estimates of their market exposure. The report also contains details of their bank guarantees and security deposits as well as their outstanding amounts for all settlement runs included in the prudential run. The Bank Guarantees subreport provides a list of all bank guarantees used in the prudential run.
GSH_PRD_EST_MARKET_EXPOSURE	The purpose of the Prudential Exposure report is to provide organisations with daily estimates of their market exposure. The report also contains details of their bank guarantees and security deposits as well as their outstanding amounts for all settlement runs included in the prudential run. The Estimated Market Exposure subreport provides summary information for the Organisation's estimated market exposure.
GSH_PRD_REALLOCATIONS	The purpose of the Prudential Exposure report is to provide organisations with daily estimates of their market exposure. The report also contains details of their bank guarantees and security deposits as well as their outstanding amounts for all settlement runs included in the prudential run. The Reallocations subreport provides a breakdown of all reallocation amounts used in the prudential run at the participant level.



GSH_PRD_SECURITY_DEPOSITS	The purpose of the Prudential Exposure report is to provide organisations with daily estimates of their market exposure. The report also contains details of their bank guarantees and security deposits as well as their outstanding amounts for all settlement runs included in the prudential run. The Security Deposits subreport provides a list of all security deposits used in the prudential run (Note: only security deposits that are maturing on a day later than the prudential date time are included in this report).
GSH_PRD_SETTLEMENT_AMOUNTS	The purpose of the Prudential Exposure report is to provide organisations with daily estimates of their market exposure. The report also contains details of their bank guarantees and security deposits as well as their outstanding amounts for all settlement runs included in the prudential run. The Settlement Amounts subreport provides a breakdown of all settlement amounts at the participant level for all settlement runs included in the prudential run
GSH_PRD_TRADE_FWD_EXPOSURE	The purpose of the Prudential Exposure report is to provide organisations with daily estimates of their market exposure. The report also contains details of their bank guarantees and security deposits as well as their outstanding amounts for all settlement runs included in the prudential run. The Trade Forward Exposure subreport provides a summary of forward exposure amounts for the organisation by product location by gas day.
GSH_REALLOC_DAILY_AMOUNT	The purpose of the Reallocation Confirmation report is to provide the participants (Credit and Debit Parties) a confirmation wherever an allocation is submitted, authorised, cancelled or expired. The Daily Amount subreport contains the reallocation daily amount for each gas day in the reallocation period.
GSH_REALLOC_REALLOCATION	The purpose of the Reallocation Confirmation report is to provide the participants (Credit and Debit Parties) a confirmation wherever an allocation is submitted, authorised, cancelled or expired. The Reallocation subreport contains the main reallocation details.
GSH_SUPP_ADHOC	The Settlements Supporting Data Report is generated when Final and Revision settlement statements are issued; it is also generated daily with details of the latest initial settlement run of the day. The report contains settlements summary information as well as participant specific data from that settlement run for the relevant charges and payments per gas day. It provides a breakdown of all executed trades and delivered quantities records included in this settlement run to assist participant in their settlement statements reconciliation. The Adhoc subreport provides a list of all individual ad-hoc payments and charges included in the settlement run.
GSH_SUPP_DELIVERED_QUANTITY	The Settlements Supporting Data Report is generated when Final and Revision settlement statements are issued; it is also generated daily with details of the latest initial settlement run of the day. The report contains settlements summary information as well as participant specific data from that settlement run for the relevant charges and payments per gas day. It provides a breakdown of all executed trades and delivered quantities records included in this settlement run to assist participant in their settlement statements reconciliation. The Delivered Quantity subreport provides a list of all individual delivered quantity records included in the settlement run.
GSH_SUPP_DELIVERY_VARIANCE	The Settlements Supporting Data Report is generated when Final and Revision settlement statements are issued; it is also generated daily with details of the latest initial settlement run of the day. The report contains settlements summary information as well as participant specific data from that settlement run for the relevant charges and payments per gas day. It provides a breakdown of all executed trades and delivered quantities records included in this settlement run to assist participant in their settlement statements reconciliation. The Delivery Variance subreport provides a

	breakdown of total delivery variance payments and charges included in the settlement run per gas day, note that total payments and total charges are listed separately for each gas day.
GSH_SUPP_EXECUTED_TR ADES	The Settlements Supporting Data Report is generated when Final and Revision settlement statements are issued; it is also generated daily with details of the latest initial settlement run of the day. The report contains settlements summary information as well as participant specific data from that settlement run for the relevant charges and payments per gas day. It provides a breakdown of all executed trades and delivered quantities records included in this settlement run to assist participant in their settlement statements reconciliation. The Executed Trades subreport provides a list of all individual executed trades records included in the settlement run.
GSH_SUPP_FEE	The Settlements Supporting Data Report is generated when Final and Revision settlement statements are issued; it is also generated daily with details of the latest initial settlement run of the day. The report contains settlements summary information as well as participant specific data from that settlement run for the relevant charges and payments per gas day. It provides a breakdown of all executed trades and delivered quantities records included in this settlement run to assist participant in their settlement statements reconciliation. The Fee subreport provides a list of all market and transaction fees included in the prudential run against the gas dates.
GSH_SUPP_PHYSICAL_GAS	The Settlements Supporting Data Report is generated when Final and Revision settlement statements are issued; it is also generated daily with details of the latest initial settlement run of the day. The report contains settlements summary information as well as participant specific data from that settlement run for the relevant charges and payments per gas day. It provides a breakdown of all executed trades and delivered quantities records included in this settlement run to assist participant in their settlement statements reconciliation. The Physical Gas subreport provides a breakdown of total physical gas payments and charges included in the settlement run per gas day, note that total payments and total charges are listed separately for each gas day.
GSH_SUPP_REALLOCATION S	The Settlements Supporting Data Report is generated when Final and Revision settlement statements are issued; it is also generated daily with details of the latest initial settlement run of the day. The report contains settlements summary information as well as participant specific data from that settlement run for the relevant charges and payments per gas day. It provides a breakdown of all executed trades and delivered quantities records included in this settlement run to assist participant in their settlement statements reconciliation. The Reallocations subreport provides a list of all individual reallocations included in the settlement run per gas day.
GSH_SUPP_SERVICES	This report adds details from the settlements run for the new Wallumbilla Compression Services product. It is produced when a settlements run is completed.
GSH_SUPP_SETTLEMENT_R UN	The Settlements Supporting Data Report is generated when Final and Revision settlement statements are issued; it is also generated daily with details of the latest initial settlement run of the day. The report contains settlements summary information as well as participant specific data from that settlement run for the relevant charges and payments per gas day. It provides a breakdown of all executed trades and delivered quantities records included in this settlement run to assist participant in their settlement statements reconciliation. The Settlement Run subreport provides header details of the settlement run.
GSH_SUPP_SETTLEMENT_S	The Settlements Supporting Data Report is generated when Final

<p>UMMARY</p>	<p>and Revision settlement statements are issued; it is also generated daily with details of the latest initial settlement run of the day. The report contains settlements summary information as well as participant specific data from that settlement run for the relevant charges and payments per gas day. It provides a breakdown of all executed trades and delivered quantities records included in this settlement run to assist participant in their settlement statements reconciliation. The Settlement Summary subreport provides summary details of the settlement run.</p>
<p>GSH_TRADES</p>	<p>The purpose of this report is to provide the Participants (buyer and seller) a confirmation whenever a trade is executed through auto matching of bids and offers or by off-Market trades. The report will also provide Participants with a list of all their future trades when triggered daily after the end of the trades for the current day.</p>
<p>GSH_TRADING_CONTACTS</p>	<p>The purpose of this report is to provide all GSH participants with a list of all Trading and Delivery contacts details for all registered participants in the GSH market. This report will be made available to all GSH participants.</p>
<p>GSH_TRANSACTION_SUMMARY</p>	<p>The report provides a summary of all trades executed in the current gas day per product. It provides information on the high/low open/close prices, total traded quantities and number of trades.</p>

## 4.2 Diagram: Entities: Gas Supply Hub

Name	Code	Comment
<b>Entities: Gas Supply Hub</b>		
<b>ENTITIES_GAS_SUPPLY_HUB</b>		

