

POWER SYSTEM OPERATING PROCEDURE – LOAD FORECASTING

PREPARED BY: Systems Capability
PROCEDURE TYPE: System Operating Procedure
DOCUMENT REFERENCE: SO_OP_3710
FINAL APPROVER: Christian Schaefer
DOC. VERSION: 20
DATE: 24 October 2017

This document is current to version 88 of the National Electricity Rules

History

Version	Date	Author	Checker	Endorser	Approver	Comments
20	24/10/2017	P Pantic	J Fox	M Davidson	C Schaefer	Changes made to reflect incorporation of ASEFS2 into market systems processes. Added sentence to section 5.3 to clarify use of bias during RERT periods
19	26/05/2014	A Yohannan	T Vanderwalt	C Brownlee	M Stedwell	Changes made to reflect incorporation of ASEFS into market systems processes.
18	29/11/2013	A Yohannan	T Vanderwalt	B Webb	M Stedwell	Added Sections 5.1, 5.2 and 5.3 to provide clarity on DFS process
17	03/01/2013	J Zhai	R Palmer	C Brownlee	M Lyons	Section 11 moved to the Short Term Reserve Procedure. Updated document to new template.
16	02/12/2011	P Uribe	R Rigoni		H Gorniak	Sections 5 (deleted), 6, 11.1 (deleted), and 12 modified due to DFS Project
15	05/08/2011	P Biddle	R Rigoni		H Gorniak	Major review
14	28/06/2010	P Biddle	S Trollope		P Ryan	Update section 5.1
13	29/07/2009	P Uribe	S Mathur		C Brownlee	Added definitions Updated Section 3 Added Appendix 3.3

Next Review

Next Review Date	Review Type
08/10/2018	Periodic

Important Notice

This document has been prepared by AEMO as required by clause 4.10.1 of the National Electricity Rules (Rules), and has effect only for the purposes set out in the Rules. The Rules and the National Electricity Law (Law) prevail over this document to the extent of any inconsistency.

No Reliance or warranty – This document might also contain information which is provided for explanatory purposes. That information does not constitute legal or business advice, and should not be relied on as a substitute for obtaining detailed advice about the Law, the Rules, or any other applicable laws, procedures or policies. While AEMO has made every effort to ensure the quality of the information in this document, neither AEMO, nor any of its employees, agents and consultants make any representation or warranty as to the accuracy, reliability, completeness, currency or suitability for particular purposes of that information.

Limitation of liability – To the maximum extent permitted by law, AEMO and its advisers, consultants and other contributors to this document (or their respective associated companies, businesses, partners, directors, officers or employees) are not liable (whether by reason of negligence or otherwise) for any errors, omissions, defects or misrepresentations in this document, or for any loss or damage suffered by persons who use or rely on the information in it.

© 2016 Australian Energy Market Operator Limited. The material in this publication may be used in accordance with the [copyright permissions](#) on AEMO's website

Contents

1	Introduction	5
2	Purpose.....	5
3	Application	5
4	Related Policies and Procedures	6
5	General Principles.....	6
5.1	Demand Forecasting System	6
5.2	Demand Forecasting System (DFS) Inputs	6
5.3	Biasing of demand forecasts	6
5.4	Load Forecast Revision Timetable	7
6	Weather Forecasts.....	7
7	Load Forecasting in the Pre-dispatch Period.....	7
7.1	Pre-dispatch - Current Day Load Forecasting	7
8	Non-scheduled wind and solar generation forecasts	8
9	Calculation of 10% and 90% Probability of Exceedence forecasts	8
Appendix A	Pre-dispatch and Short Term Load Forecasting Methodology	9
Appendix B	Australian Wind Energy Forecasting System (AWEFS) and Australian Solar Energy Forecasting System (ASEFS).....	10
Appendix C	Australian Solar Energy Forecasting System Phase 2 (ASEFS2).....	12

Figures

Figure 1	Statistical models forecasting flowchart.....	9
----------	---	---

Tables

Table 1	Glossary.....	5
Table 2	Related Policies and Procedures	6
Table 3	Load forecast timetable	7
Table 4	Weather reference location	7
Table 5	Pre-dispatch load forecasting error thresholds	8

Glossary

- a) In this document, a word or phrase *in this style* has the same meaning as given to that term in the NER.
- b) In this document, capitalised words or phrases or acronyms have the meaning set out opposite those words, phrases, or acronyms in the table below.
- c) Unless the context otherwise requires, this document will be interpreted in accordance with Schedule 2 of the *National Electricity Law*.

Table 1 Glossary

Term	Meaning
AWEFS	Australian Wind Energy Forecast System
ASEFS	Australian Solar Energy Forecasting System
ASEFS2	Australian Solar Energy Forecasting System (Phase 2)
DFS	Demand Forecasting System
NER	National Electricity Rules
NEM	National Electricity Market
POE	Probability of Exceedance
PV	Photovoltaic
SCADA	Supervisory Control And Data Acquisition
STPASA	Short Term Projected Assessment of System Adequacy

1 Introduction

AEMO must produce indicative *load* forecasts for each *region* for the following timeframes

- Each day for the day ahead – *Pre-dispatch* forecast
- Each day for the period two to seven days ahead – Short term forecast

These forecasts are produced in accordance with the Spot Market Operations Timetable.

If there is any inconsistency between this Procedure and the NER, the NER will prevail to the extent of that inconsistency.

2 Purpose

To provide information about the *pre-dispatch* and short term load forecasts produced by AEMO.

3 Application

This Procedure applies to AEMO.

4 Related Policies and Procedures

Table 2 Related Policies and Procedures

Policies and Procedure	Title
	Spot Market Operations Timetable
	Regional Demand Definition

5 General Principles

Pre-dispatch and short term *load* forecasts are produced on the basis of calendar days. Eight calendar days are required to fully cover the seven *trading days* of the short term forecast period.

The New South Wales, Victoria and South Australia *regions* are forecast as a single area.

The Queensland *region* forecast is an aggregate of forecasts for the Northern, Central and Southern areas.

The Tasmania *region* forecast is an aggregate of the Northern and Southern areas and the four major industrial *loads*.

AEMO produces 10%, 50% and 90% probability of exceedence (POE) forecasts for all timeframes. The 50% POE forecast is used to set generation targets in *pre-dispatch*. The 50% and 10% POE forecasts are used in the STPASA process to calculate reserve levels.

5.1 Demand Forecasting System

The Demand Forecasting System or DFS generates the 10%, 50% and 90% POE demand forecasts to be used in *pre-dispatch* and STPASA processes. DFS generates the demand forecasts automatically every half-hour and, under normal circumstances, does not require manual intervention.

5.2 Demand Forecasting System (DFS) Inputs

There are a number of inputs that are used by the forecast models for generating the half-hourly demand forecasts. The key inputs are listed below:

1. Historical actual metered loads (Actual Load data from January, 2010)
2. Real-time actual metered loads (SCADA data from immediately preceding intervals)
3. Historical and Forecast Weather data (Temperature and Humidity)
4. Non-scheduled wind generation forecasts (from AWEFS)
5. Non-scheduled solar generation forecasts (from ASEFS)
6. Small-scale (rooftop) solar generation forecasts (from ASEFS2)
7. Type of day (Weekday/Weekend), School Holidays, Public holidays and Daylight savings information.
8. Mandatory Restrictions (MR)/RERT schedules.

5.3 Biasing of demand forecasts

AEMO conducts daily reasonability checks of the demand forecasts in every region. If the demand forecasts generated by the DFS are not consistent with the temperature forecasts, AEMO will manually override the forecasts for the period it is seen to be inconsistent. AEMO will also enter a manual override of the demand forecast during periods of RERT activation.

5.4 Load Forecast Revision Timetable

As a minimum, each forecast will be produced in accordance with the Spot Market Operations Timetable. AEMO may also update forecasts at other times if it becomes aware of significant changes. Table 3 provides a summary of revision timeframes.

Table 3 Load forecast timetable

Load Forecast	Revision	Time (EST)
Pre-dispatch (Current Day)	Continuous	As required ¹
Pre-dispatch (Next Day) After 1230 hrs	Each Day	As each weather forecast is updated.
Short Term	Each Day	Prior to 1230 hrs

6 Weather Forecasts

For the purposes of *load* forecasting, a major regional load centre will be used as the weather reference for that area or *region*. Table 4, below, lists the weather reference locations that are used for each area or *region*.

Table 4 Weather reference location

Area / Region	Weather Reference
Queensland-North	Townsville
Queensland-Central	Rockhampton
Queensland-South	Archerfield
New South Wales	Sydney, Bankstown, Penrith and Canberra
Victoria	Melbourne Airport
South Australia	Adelaide, Adelaide Airport
Tasmania – North	Launceston
Tasmania – South	Hobart

7 Load Forecasting in the Pre-dispatch Period

The *pre-dispatch* period starts at the next *trading interval* and continues to include the next *trading day* with a half hour resolution. At the time of initial publication the *pre-dispatch* covers the remainder of the day, the next day and the first 4 hours of the following day.

The methodology adopted for *pre-dispatch load* forecasting is detailed in Appendix A.

7.1 Pre-dispatch - Current Day Load Forecasting

Each *regional load* forecast for the current day is monitored and modified according to changing *regional load*, system or weather conditions.

¹ Refer to section 7

Forecast error thresholds have been determined for each *region* and are presented in Table 5. The error thresholds are based on the historical peak demand for the *region* and previous *load* forecasting performance. The forecast error thresholds are reviewed on a regular basis.

Table 5 Pre-dispatch load forecasting error thresholds

Region	Forecast Error Threshold (MW)
Queensland	100
New South Wales	150
Victoria	100
South Australia	50
Tasmania	50

The *load* forecast for a *region* will be updated, via the Forecast Monitor, whenever the forecast error is greater than the forecast error threshold in a *region* for two consecutive *trading intervals*.

8 Non-scheduled wind and solar generation forecasts

AEMO uses the output from the AWEFS, ASEFS and ASEFS2 to adjust the *pre-dispatch* and short term forecasts to account for the generation of any non-scheduled wind and solar farms as well as generation of any small-scale (rooftop) PV systems. Appendix B provides details of AWEFS and ASEFS. Appendix C provides details of ASEFS2.

9 Calculation of 10% and 90% Probability of Exceedence forecasts

The 10% and 90% POE forecasts are derived from the 50% POE forecast. The 10% and 90% POE forecast are produced by multiplying the 50% POE forecast by a scaling factor. A different scaling factor may be specified for each half-hour of the short term period. The 10% and 90% scaling factors are based on statistical analysis of historical *load* and forecast data.

Appendix A Pre-dispatch and Short Term Load Forecasting Methodology

The AEMO DFS uses statistical models to automatically generate Pre-dispatch and short-term forecasts every half-hour for all NEM regions including sub-regions that can have a significant impact on constraints.

The major factors considered in the statistical models are;

- Temperature profile
- Weather season
- Week day / weekend
- Unusual conditions (school / public holidays / daylight savings)

Figure 1 provides an overview of the process.

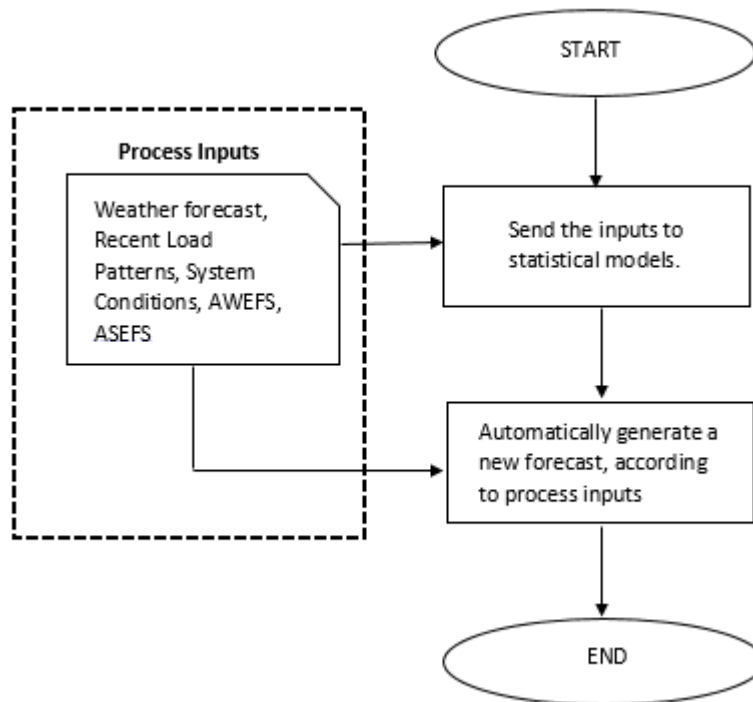


Figure 1 Statistical models forecasting flowchart

Appendix B Australian Wind Energy Forecasting System (AWEFS) and Australian Solar Energy Forecasting System (ASEFS)

The AWEFS and ASEFS provides wind and solar generation forecasts for all NEM wind and solar farms (with registered capacity $\geq 30\text{MW}$) for the following time frames:

- *Dispatch* - 5 minutes ahead
- 5 Minute *pre-dispatch* - 5 minute resolution, one hour ahead
- *Pre-dispatch* - 30 minute resolution, up to 40 hours ahead
- Short term – 30 minute resolution, 7 days ahead
- Medium term – daily resolution, 2 years ahead

Separate wind and solar generation forecasts are produced for²

- Each individual farm (available to the *Registered Participant*, and relevant *Transmission Network Service Provider*)
- Each *region* (available to all *Registered Participants*)
- Entire NEM (available to all *Registered Participants*)

The following inputs are required by the AWEFS

- Real time SCADA measurements of MW output, wind speed, wind direction, turbines in service, control system set-point (where available). It is the responsibility of the wind farm operator to ensure the accuracy and availability of this information.
- Numerical weather predictions
- Standing data provided by wind farms in accordance with the *Energy Conversion Model*. This is provided as part of the registration process.
- Availability information provided by the wind farm operator, that includes the number of turbines available and the upper MW limit on the wind farm. It is the responsibility of the wind farm operator to ensure the accuracy and availability of this information.

The following inputs are required by the ASEFS

- Real time SCADA measurements of MW output, Global Horizontal and Inclined Irradiation, wind speed, wind direction, no. of inverters available, barometric pressure, control system set-point (where available), module surface temperature and relative humidity. It is the responsibility of the solar farm operator to ensure the accuracy and availability of this information.
- Numerical weather predictions
- Standing data provided by solar farms in accordance with the *Energy Conversion Model*. This is provided as part of the registration process.
- Availability information provided by the solar farm operator, that includes the number of strings available and the upper MW limit on the solar farm. It is the responsibility of the solar farm operator to ensure the accuracy and availability of this information.

AEMO uses the AWEFS and ASEFS forecasts in the following ways:

Dispatch forecast

² Contact the AEMO Information Centre for access details

- Used in the *dispatch* process to determine target MW for semi-scheduled wind and solar farms.

Pre-dispatch forecast

- Used to determine *pre-dispatch* targets for semi-scheduled wind and solar farms.
- Used to adjust the *pre-dispatch* forecast by subtracting the output of non-scheduled wind and solar farms.

Short term forecast

- Used to adjust the short term forecast by subtracting the output of non-scheduled wind and solar farms.

Appendix C Australian Solar Energy Forecasting System Phase 2 (ASEFS2)

The AWEFS2 provides solar generation forecasts for small-scale distributed PV systems, defined as less than 100 kilowatt (kW) system capacity for the following time frames:

- *Pre-dispatch* - 30 minute resolution, up to 40 hours ahead
- Short term – 30 minute resolution, 7 days ahead

Rooftop PV generation forecasts are produced for³

- Each *region* (available to all *Registered Participants* and the general public)

The following inputs are required by the ASEFS2:

- Numerical weather prediction data from multiple weather data providers
- Output measurements from selected household rooftop PV systems from PvOutput.org
- Static Data from selected systems from PvOutput.org, such as inverter size and model
- Aggregate kW capacity by installed postcode for small-scale solar systems as recorded by the *Clean Energy Regulator*

AEMO uses the ASEFS2 forecasts in the following ways:

Pre-dispatch forecast

- Used to adjust the *pre-dispatch* forecast by subtracting the output of rooftop solar PV systems.

Short term forecast

- Used to adjust the short term forecast by subtracting the output of rooftop solar PV systems.

³ Contact the AEMO Information Centre for access details